

Zeochem North American Headquarters

Louisville, Kentucky
Zeochem, Client

With departments scattered in separate buildings down a stretch of road, this global chemical corporation confronted daily inefficiencies in logistics. Their mission to foster collaboration, innovation, and sustainability was poorly represented. Tasked with knitting together a diverse workforce under one roof, the design team drew upon Zeochem's Swiss heritage for inspiration to unite form, function, and aesthetics. The project unites the Administrative, Research & Development, and Quality Control departments within one building that houses offices, collaborative spaces, amenities, and a state-of-the-art laboratory.

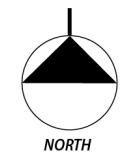
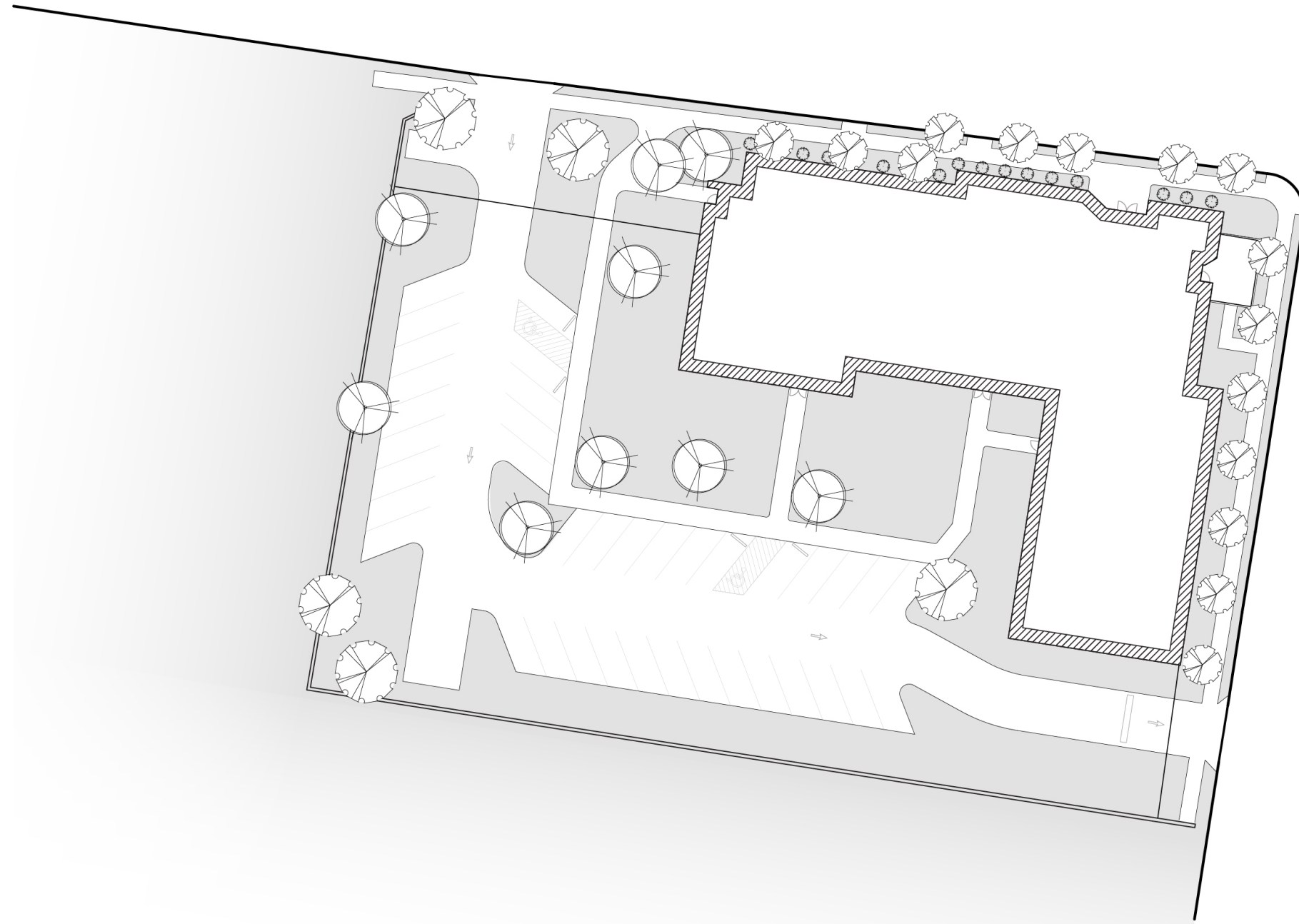
The 15,067 square foot, one-story project is located within a large urban industrial area on the outskirts of downtown Louisville, adjacent to its own existing manufacturing facility. The project adds landscaping and trees to an area of the city that is nearly completely barren of greenspace and plant life. In fact, the entire site was previously a large impervious parking lot. The site now features numerous trees and landscaping on all sides of the building. With few outside visitors, the building layout and circulation is simple and largely centered on product and employee workflow. Employees transport the manufactured sample product from the plant and immediately deliver it to the testing labs by way of a designated entry. All entries are clearly designated with materials and lighting to assist with wayfinding.

Human connection was a major component of the design process. This building allows the varying corporate positions, from factory workers to CEO, to intermingle in the shared amenity spaces and at the numerous writable surfaces within the hallways. Wide hallways, huddle rooms, and clear site lines allow multiple opportunities for unplanned interaction, connection, and engagement.

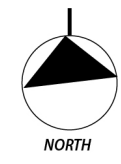
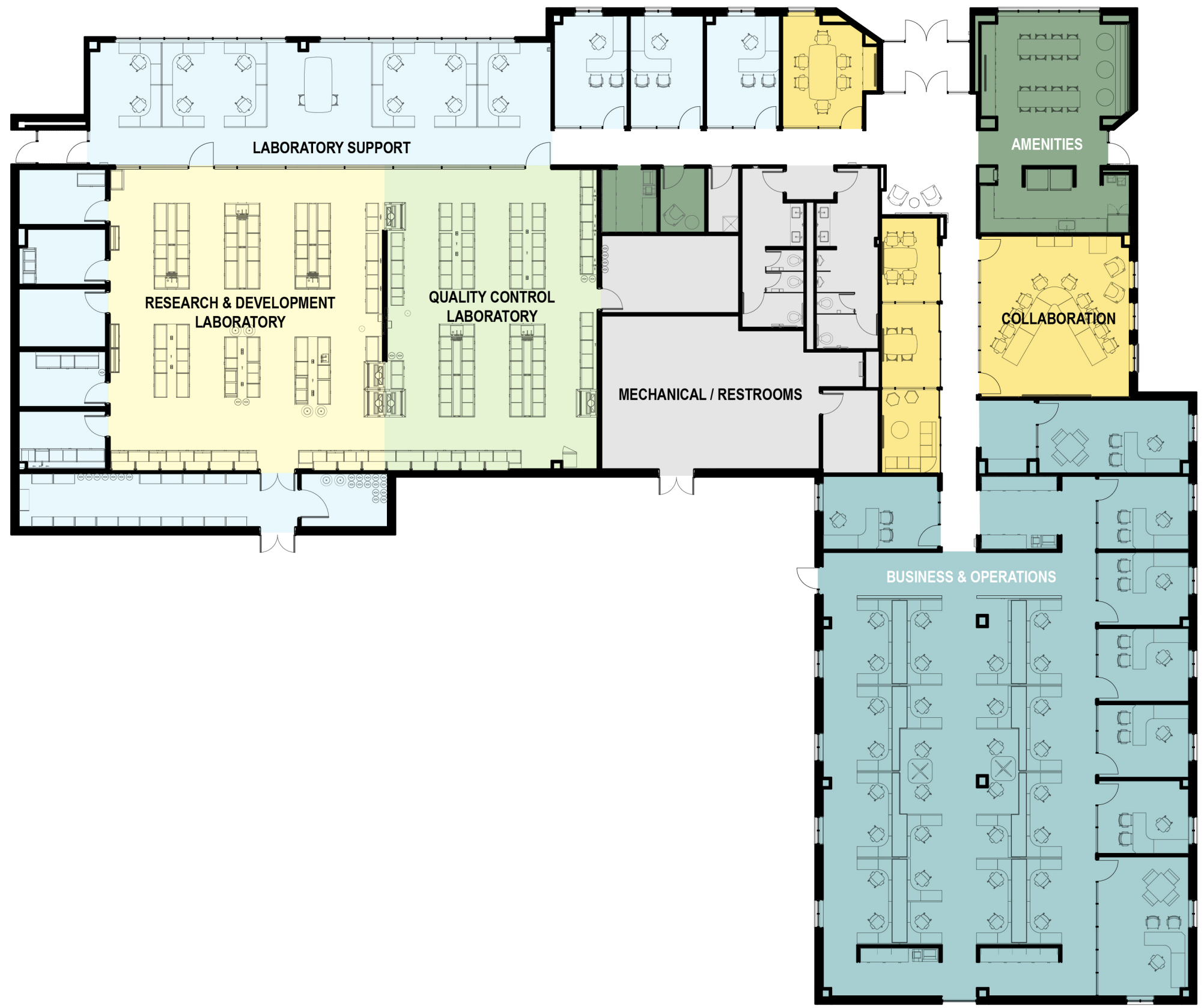
Project materials were selected with cost and durability in mind. The very nature of eliminating the travel between the plant, labs, and offices reduces fossil fuel usage immensely. In addition to this environmentally sustainable change, the elimination of travel also increases productivity and safety, benefiting the company and staff alike.

Both materials and palette respect the company's branding colors and give nod to the minimalist Swiss aesthetic. The design team worked with company representatives to ensure that branding colors, fonts, and imagery were accurately represented throughout the project. While the building adheres to these brand standards, it is also a unique addition to the company's global facilities, giving the staff a sense of pride and place.

SITE PLAN



FLOOR PLAN



NORTH/SOUTH BUILDING SECTION





ZEOCHEM

1360



ZEOCHEM





EXIT

104



ZEOCHEM®







KENTUCKY



TEXAS



BRAZIL



SWITZERLAND
BOSNIA & HERZEGOVINA
CZECH REPUBLIC



SINGAPORE



CHINA



JAPAN







