

MURRAY-CALLOWAY COUNTY HOSPITAL CANCER CENTER

Project Location:

Murray, Kentucky

Project Owner:

Murray-Calloway County Hospital

Project Category:

HEAL - Healthcare

Project Type:

Addition/Renovation

Specific Use of Building:

Hospital

Building Area: (s.f.)

17,775 s.f.

Date of Completion:

June, 2023

Program Summary:

Bring medical oncology, radiation oncology, and infusion therapy all under one roof to better serve cancer patients in Western Kentucky

Utilize Evidence-Based Design EBD

Expand on hospital interior finish standards for a hospitality driven approach

Become a new east entrance for the hospital

Program Statement:

Large punched opening windows give ample daylight to visitors in the new concourse as they wait in a hospitality-quality space for their loved ones to receive treatment. The design team worked with a local metal artist to develop dividers to help patients feel a sense of privacy during their long stays. A patient approaches the check in much like a hotel front desk, designed to help ease their intimidation with treatment.

In the treatment areas, full-height strip windows with perforated shades connect infusion patients with the new meditation garden outside, providing visual interest and comfort to patients who may be visiting the center on a daily basis to receive treatment. Thoughtful consideration was given to finishes to continue the biophilic design of the space, with known evidence of helping the patients heal. Materials are easy to clean and maintain to protect the susceptible immune systems of a cancer patient. Built in and framed artwork pieces from photography contributed by patients and staff help people feel a sense of place and pride from their local Western Kentucky imagery.

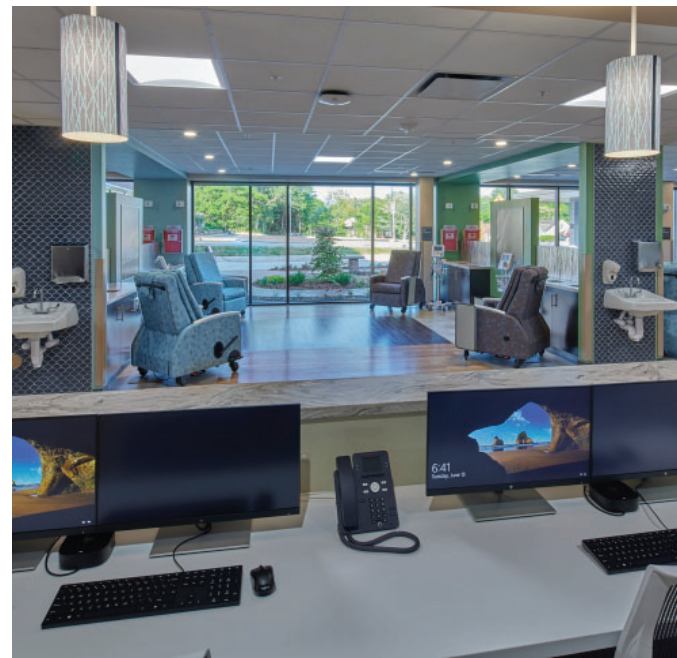
The new linear accelerator vault with seven-foot-thick concrete walls and ample shielding is the highlight of the treatment spaces and was designed both with the latest Varian treatment technology as well as patient comfort in mind. With a tree-like artwork light above the patient table, warm wood tones, and soothing colors, a high priority was placed on calming an otherwise stressful environment. When combined with a CT-scanner room and dedicated control room for staff to monitor patients, alongside 8 new exam rooms, the new Regional Cancer Center truly serves the most vulnerable patients with the utmost care.



MEDITATION GARDEN



LINEAR ACCELERATOR



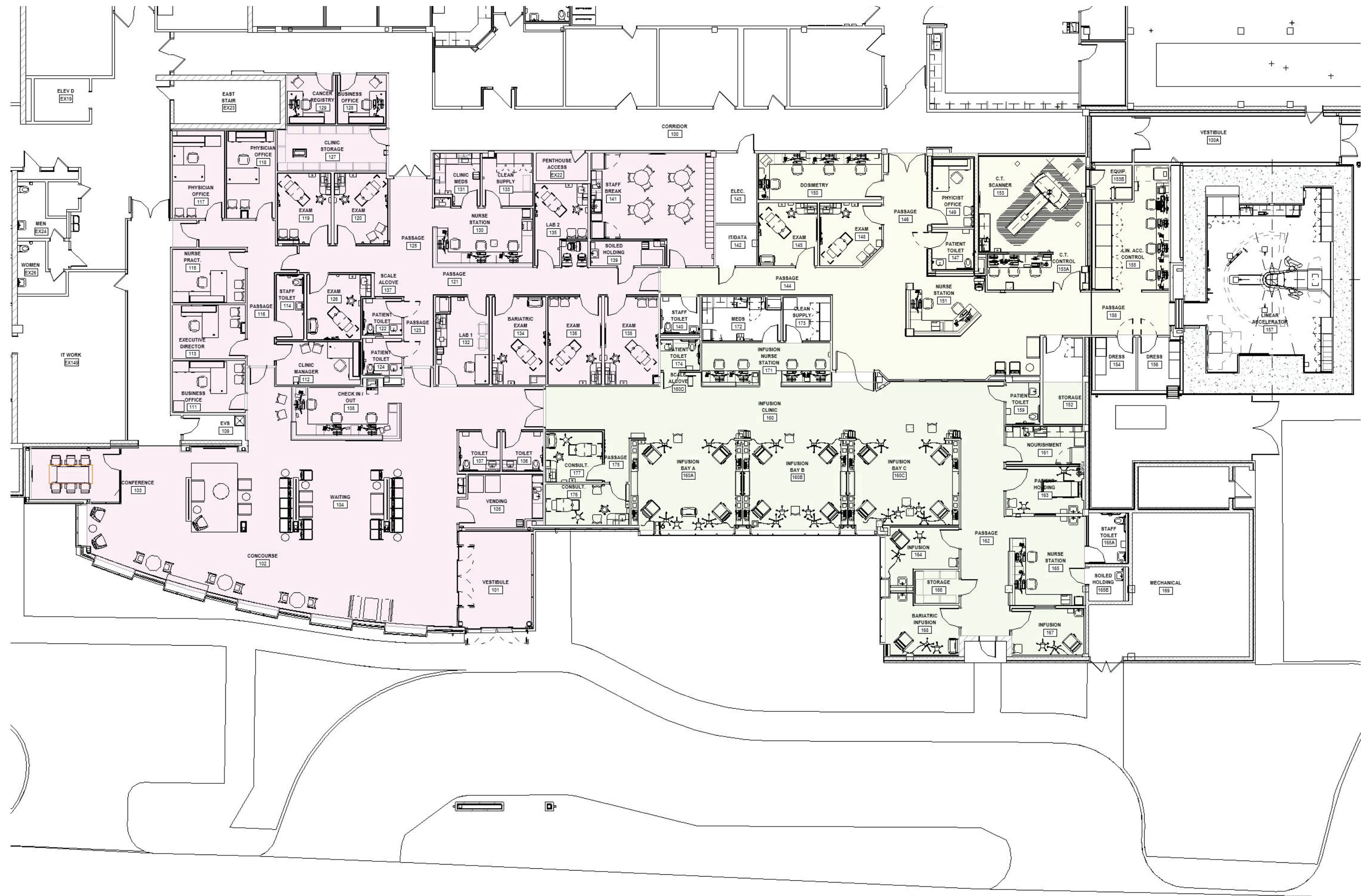
PATIENT CENTERED CARE



EVIDENCE-BASED DESIGN



VARIETY OF SEATING



FLOOR PLAN



- LEGEND: (R) RENOVATED, (N) NEW
- 1 MEDITATION GARDEN (N)
 - 2 CONCOURSE (N)
 - 3 PROVIDER OFFICES (R)
 - 4 ONCOLOGY (N)
 - 5 STAFF RESPITE (N)
 - 6 INFUSION (N)
 - 7 RADIOLOGY (N)
 - 8 CT (N)
 - 9 LINEAR ACCELERATOR VAULT (N)



CONCOURSE AND WAITING | HOSPITALITY DESIGN DRIVEN APPROACH



WAITING | RESIDENTIAL FEEL FOR PATIENT COMFORT



INFUSION | ACCESS TO DAYLIGHT AND MEDITATION GARDEN



RADIOLOGY | BORROWED DAYLIGHT FROM INFUSION THROUGH GLASS PANELS



INFUSION | PRIVATE INFUSION ROOM WITH GARDEN VIEW



EXTERIOR FACADE | ENTRANCE CANOPY AND MEDITATION GARDEN