



Executive Suite Renovation

Client

Northwest Bank

Location

3 Easton Oval, Suite 500
Columbus, OH 43219

Size

16,600+ square-feet

Northwest Bank, a full-service financial institution, identified Columbus as the landing spot for its holding company's headquarters relocation. Relocating the holding company HQ to Columbus is an integral component of Northwest Bank's plan to continue providing best-in-class service and access to their customers, supporting the livelihood and wellbeing of their employees and their families, contributing to the growth of local businesses and economies and giving back to community organizations that make a difference in the lives of others.

The interior renovation concept for the Columbus HQ used guiding principles that were established during the programming phase to inform direction of material selection and overall user experience within the suite. Hospitality was an important driver for the development of the flow of the space to support the many gatherings and community functions that Northwest Bank desires to host in their new suite.

During the visioning stage five words stood out from the rest — **Strength. Trust. Progressive. Welcoming. Special.** These five words were used as the basis for the design of the new suite.

The new headquarters brings all the executives together for stronger collaboration and thought leadership. The multi-purpose function of this high-end suite was carefully crafted to support board meetings, comfortable and flexible working environments, as well as a space for vibrant community events in the evenings.

Through interior architecture, sophisticated materials and purposeful application, thoughtful furniture selection and branding were the final key elements in pulling the suite together. Northwest Bank's new headquarters makes the grand first-impression that they strived for when designing their new space.

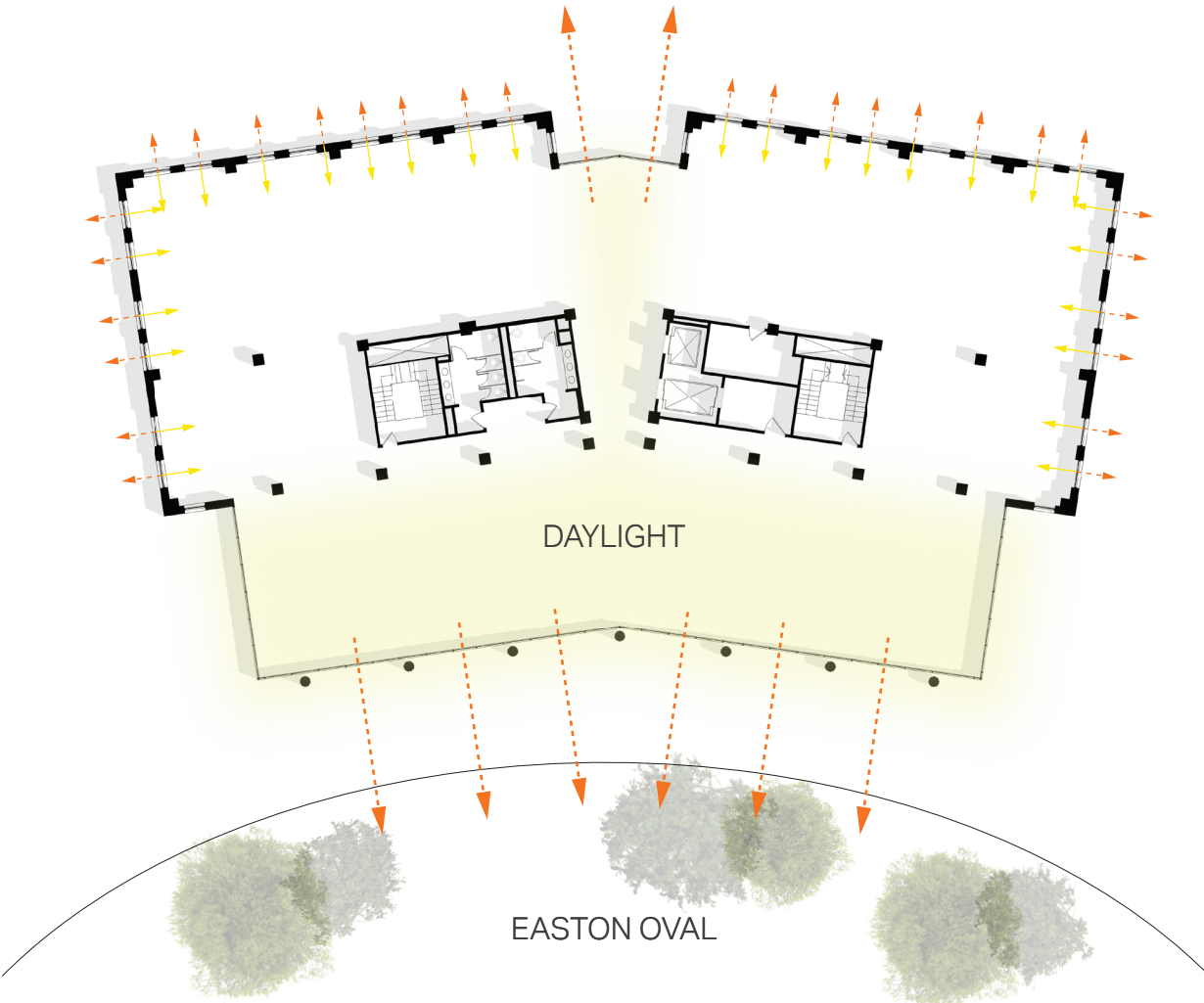
Floor Plan

- 1. Entrance Lobby
- 2. Flexible Work/Entertainment Space
- 3. Open Work Space
- 4. Secondary Café
- 5. Executive Lounge
- 6. Executive Boardroom
- 7. Dining Room

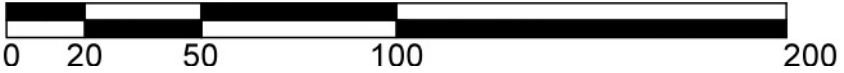
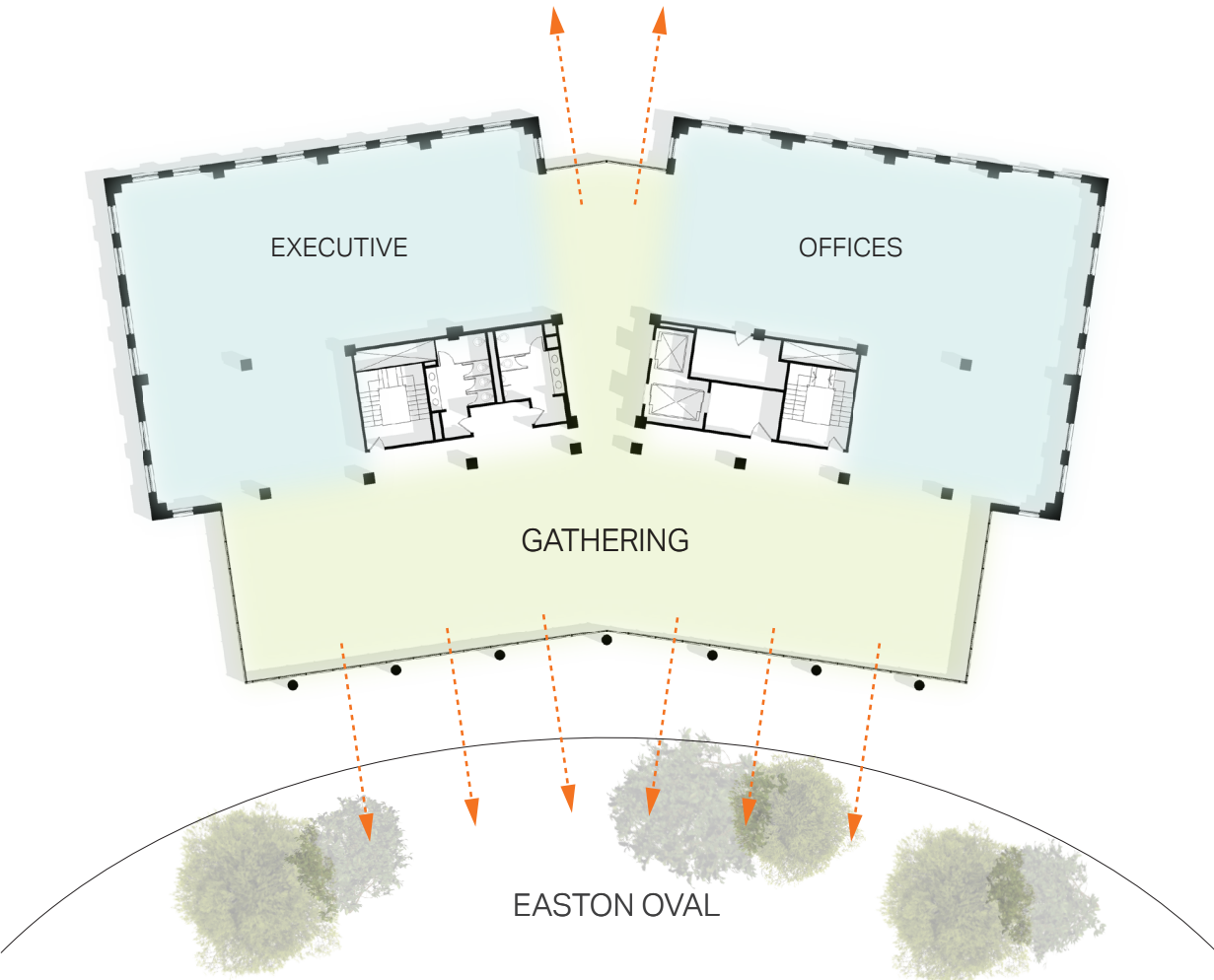


Space organization based around daylight and views

Easton Town Center

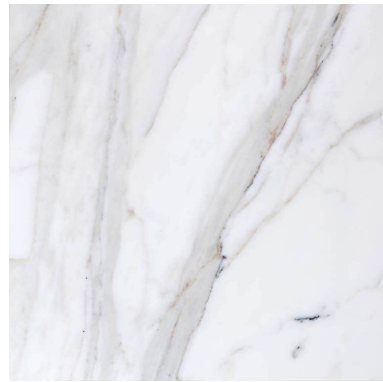
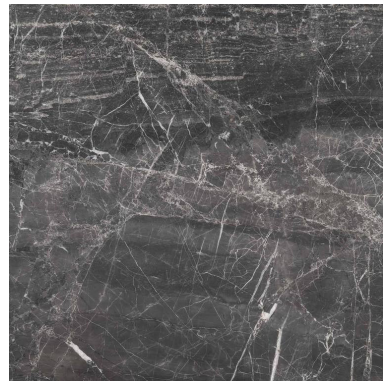


Easton Town Center

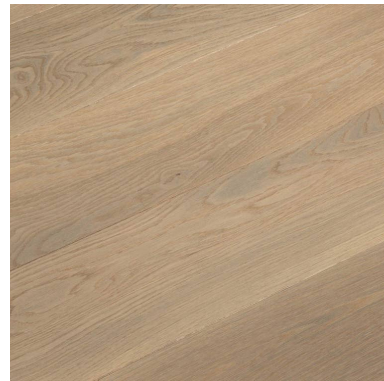
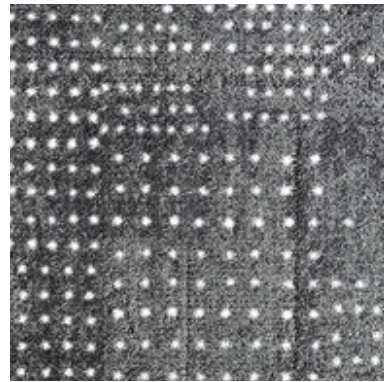


Interpreting words into design.

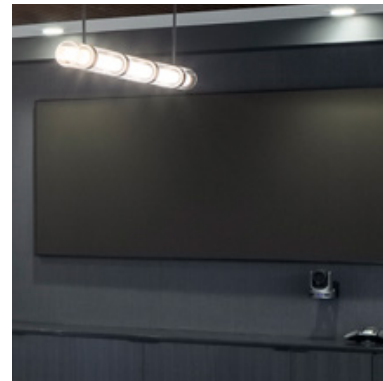
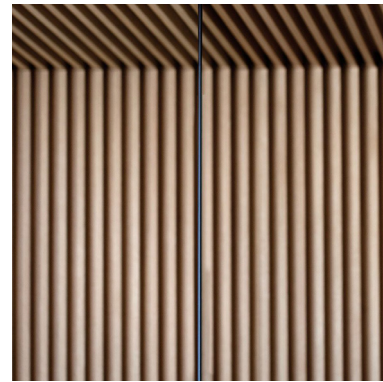
Strength.



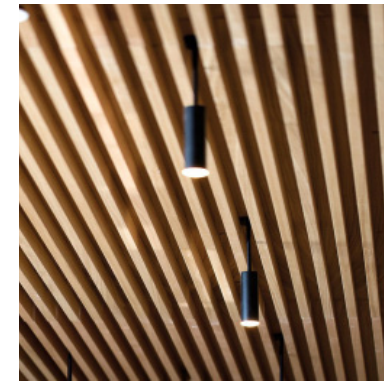
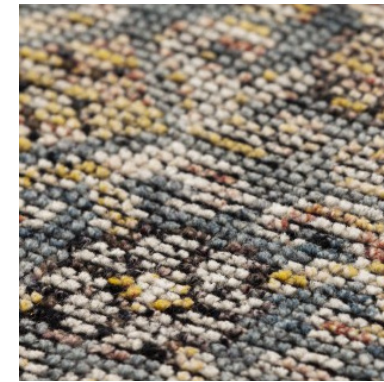
Trust.



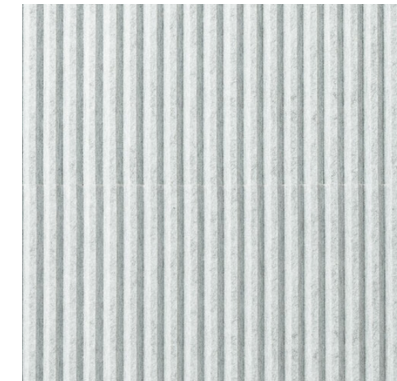
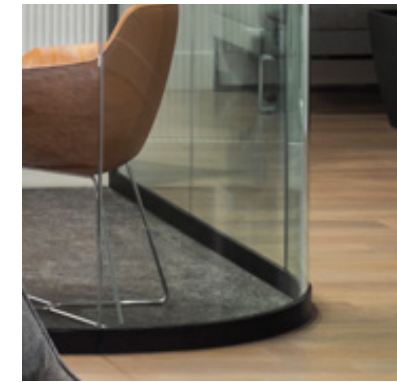
Progressive.



Welcoming.

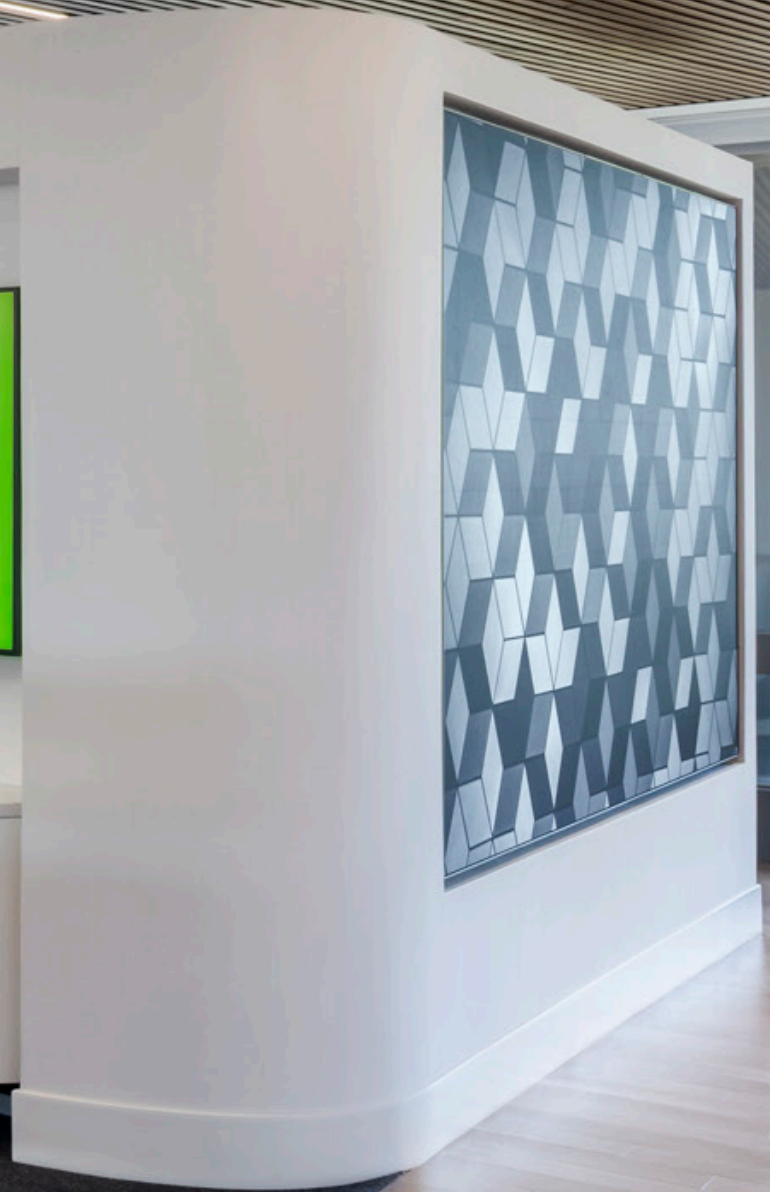
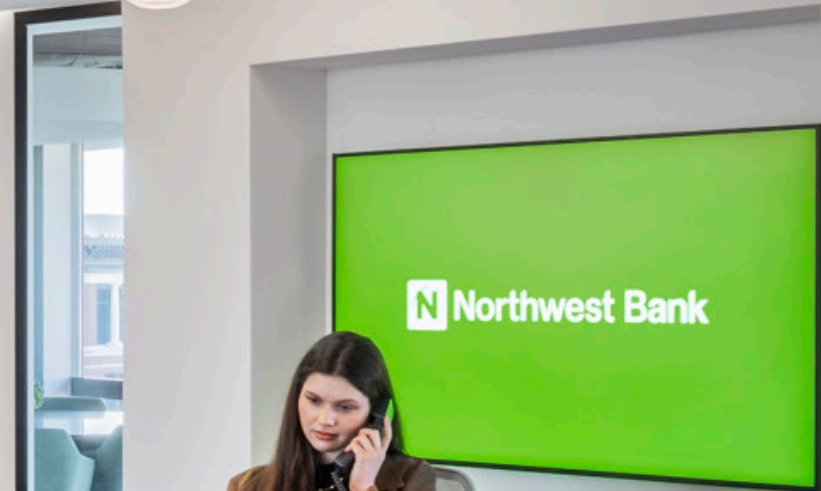


Special.



Champions of opportunity.

The greatest gift we can provide our customers
is empowering them to help themselves.



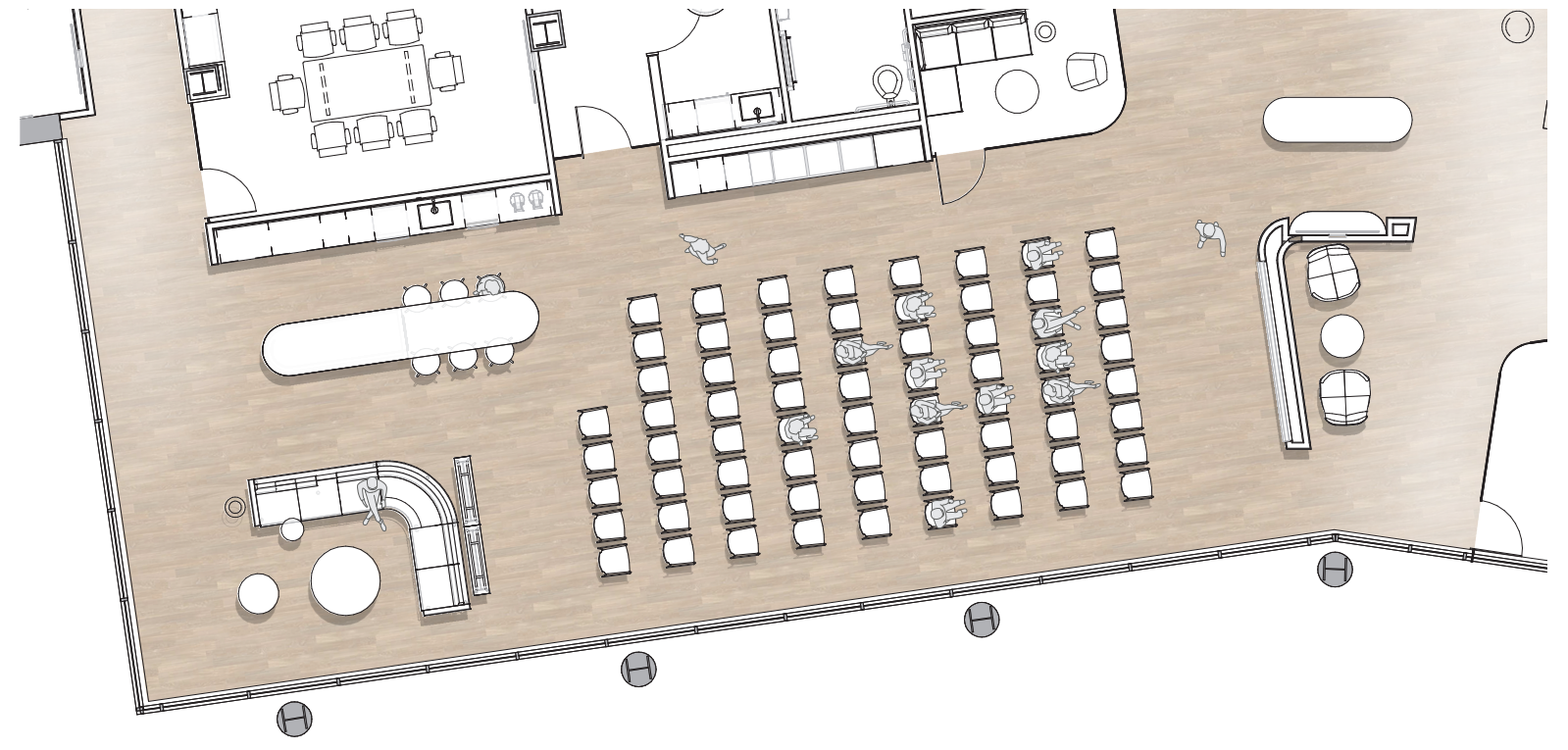
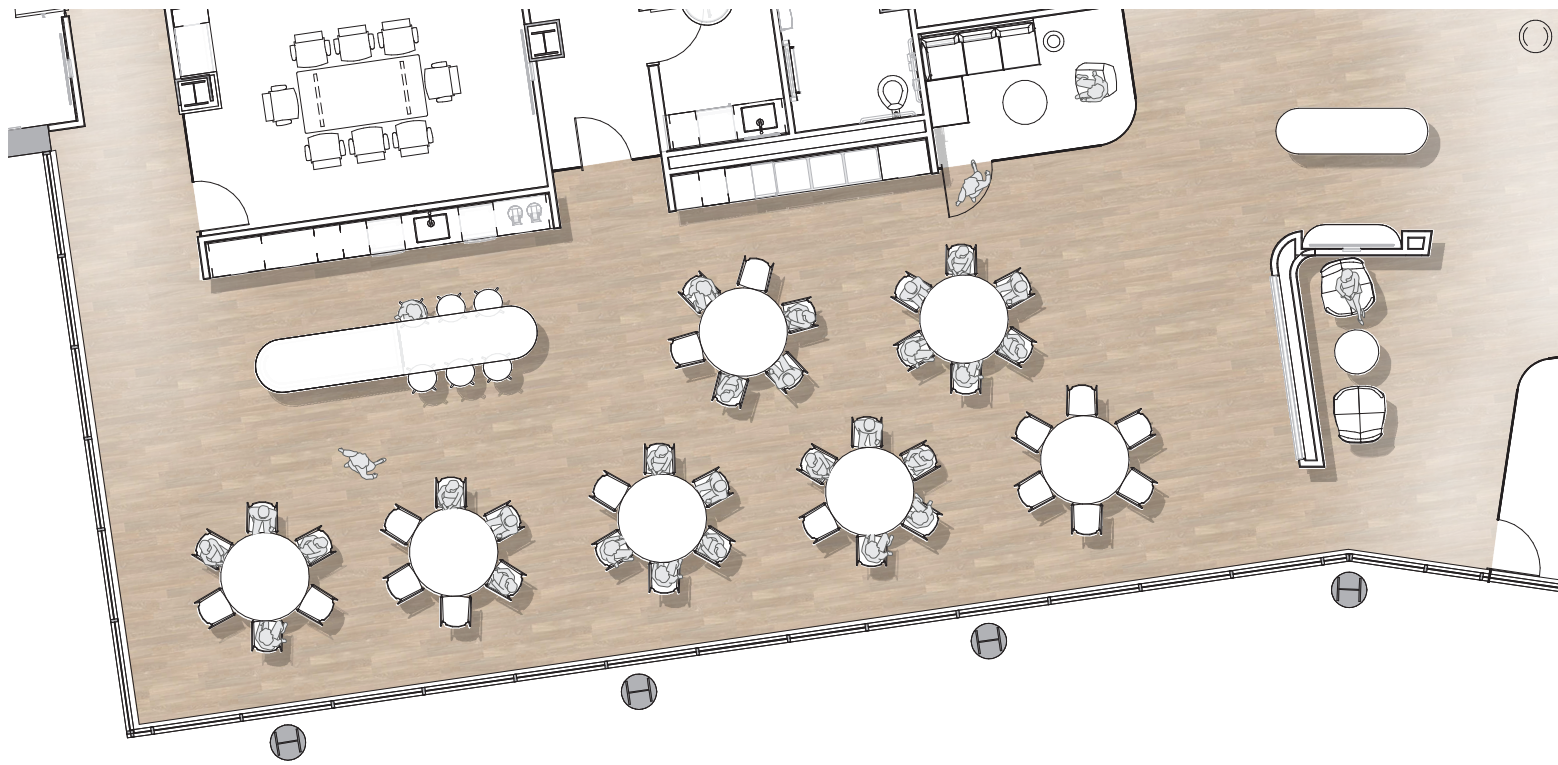
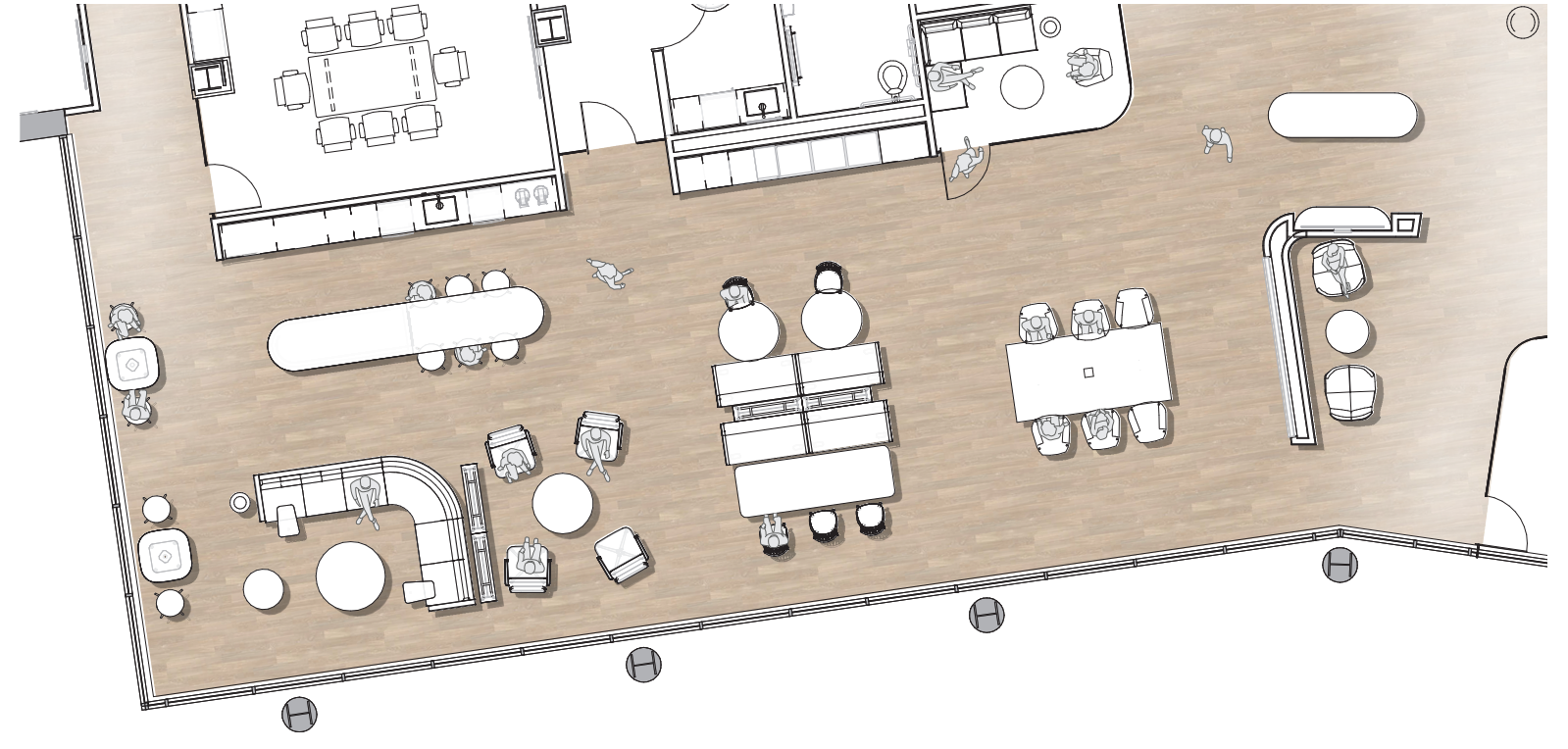
Reception

Upon entering the lobby, executives and visitors alike get a sense of who Northwest Bank is. Branding and materials creates a sense of establishment, but also focuses on the future.



Entertainment Space

The Entertainment Space was strategically placed at the South end of the suite, with floor-to-ceiling glass, so that the best views could be shared by all.



The multi-purpose entertainment space was a very important aspect of the project for the client. Not only does it serve as a comfortable and flexible work space during the day, it can transform into a vibrant space after hours for the bank to make connections with the community.



Entertainment Space and Café

A well-equipped kitchen supports staff for daily office comforts and can be a gathering space for food and drinks during community events. Large porcelain sheet tiles were used as a back-splash to create a sense of sophistication and modernity.



Huddle Room

Various-sized meeting spaces are provided throughout the suite to support the team. This bespoke huddle room off of the reception area was created for quick meeting access with guests. It is finished with an outside curved-glass corner, acoustical wall treatment and a unique light fixture.



Visitor Offices

Northwest Bank has offices located around the Northeast US and will frequently have staff visit from other office locations. These rooms are set up to support the visitors. Greenery was implemented throughout the suite, not only to add texture and color, but to also allow for human connection with nature.



Café

This secondary café space provides a central gathering point if the main entertainment space were to be occupied by an event. Staff are able to access beverages while also having a comfortable space for casual conversation and collaboration. A large rug along with soft curves creates a soft and subdued environment with generous access to natural light.



Dining Space

The dining room was a special space requested by the CEO. He wanted to be able to meet with guests in a setting that did not feel like a typical conference room, but to give him the opportunity to create meaningful relationships at a round table while sharing a meal.



Our dedicated employees continue to put the needs of our customers and communities first.

Changing a family's future by creating sustainable homeownership for people living across our footprint is our focus and mission.

Executive Lounge

The executive lounge area represents an intersection where leadership can meet outside of the boardroom and CEO's office. This tech-free zone highlights awards and achievements received by the bank and is anchored by a large circular light, warm wood ceiling and textural inset rug.

OUR ROOTS RUN DEEP



The Boardwalk

The boardwalk is a walk way connecting the boardroom and entertainment space and created an opportunity for branding that showcases the strong community connection that Northwest Bank has.



Board Room

The boardwalk is a walk way connecting the boardroom and entertainment space and created an opportunity for branding that showcases the strong community connection that Northwest Bank has.