



Address

CLIENT

Crawford Hoying

LOCATION

6640 Riverside Drive, Suite 500
Dublin, Ohio 43017

TYPE

Work (Office)

AREA

5,200 sqft

Blurring the lines between workplace, residential, and retail.

Bridge Park is Dublin, Ohio's newest development that combines upscale residential living with unique dining, shopping, and attractions in Downtown Dublin. The development is home to Crawford Hoying, a developer, who prides themselves on building and managing communities with a diverse mix of people and businesses. They were ready to expand their headquarter location with a new concept.

Address, a Crawford Hoying Sales Agency, combines and integrates its leasing and residential sales staff. Blurring the lines between residential and retail, a new design approach was implemented to create hospitality, neighborliness, and relaxation.

As a one-stop shop for anyone who is interested in exploring the best place to live, whether leasing an apartment or buying a home, visitors can explore their options at length in this space.

Included is a design center where future residents can pick out finishes and fixtures with an interior designer. A custom-designed peg-and-board retail wall displays merchandise from local vendors and businesses, creating community beyond the residential conversation.

Breaking down traditional workplace norms, personal desks are eliminated, making room for informal meeting spaces with lounge areas and private rooms. Technology is incorporated to make any area mobile and functional. As an upscale workplace, fitted with modern, plush furniture and a striking bar, this space is designed to become a conversational hub. An associate might meet with a client over a cup of coffee at the table or with a cocktail at the bar, creating a more natural conversation and personalized opportunity.

Ready to entertain kids or the next happy hour, employees can craftily curate the sales experience to their diverse demographics. Blended into the Bridge Park fabric, visitors are pleasantly surprised by the trendy, contemporary interior design with friendly staff ready to pour a glass of wine while making residential dreams become reality.



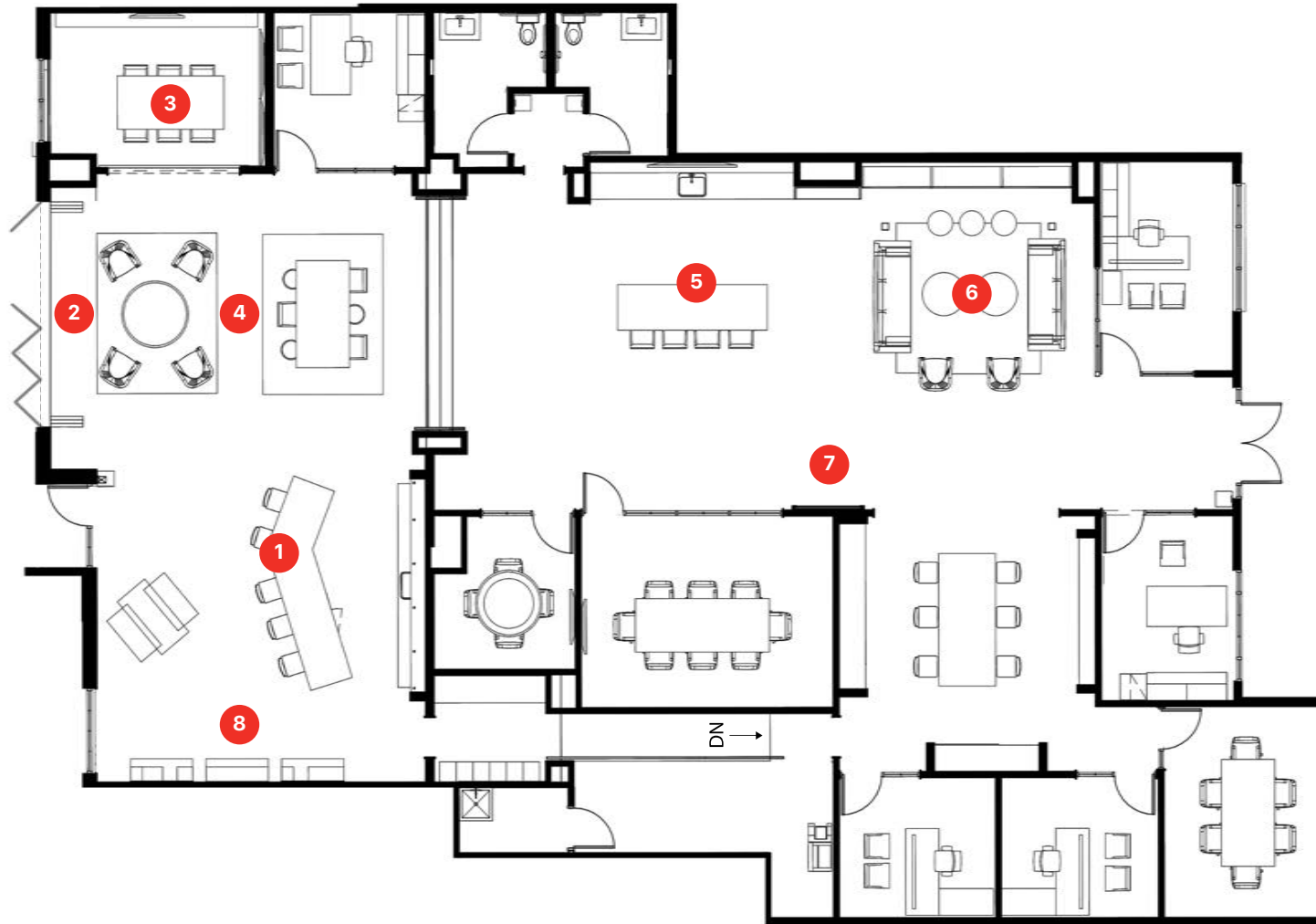
LEGEND

- A John Shields Greenway
- B Public Open Space
- C Pedestrian Tunnel Access
- D Shade Tree
- E Utility Enclosure
- F Loading Zone
- G Patio
- H Bike Racks
- I Street Tree Planter

Site Plan

Context

Our site faces North Market and Longshore Street, the heartbeat of Bridge Park, connecting the nightlife, restaurants, and other businesses. Foot traffic and awareness increase when Longshore Street is converted to a farmer's market on Saturdays and live music in the evenings. Our project, Address, services the surrounding residential blocks as a leasing and support office.



Floor Plan
Stories & Call outs

- 1. Welcome Bar
- 2. Street Life Connection
- 3. Free Address Seating
- 4. Lighting Details
- 5. Hosting Space
- 6. Living Space
- 7. Address Display
- 8. Retail Area



1 A Warm Welcome
Welcome Bar

The focal point as you enter the leasing office, the bar becomes the statement piece in the room offering a casual meeting place or opportunity for happy hour.



2 Part of the Neighborhood
Street Life Connection

Blended into the Bridge Park fabric, passersbys can see into the trendy, contemporary space through a large glass wall. On nice weather days, the wall can fold back opening up the space to interaction on the vibrant street.



3 Take a Seat
Free Address Seating

Breaking down traditional workplace norms, personal desks are eliminated, making room for informal meeting spaces with lounge areas and private rooms. Free address seating creates a choice-based workplace.



4 **Collaboration
with Luum**
Lighting Details

Upon entry, visitors' eyes are drawn in by the custom-designed light fixtures creating a focal point to the central gathering space.



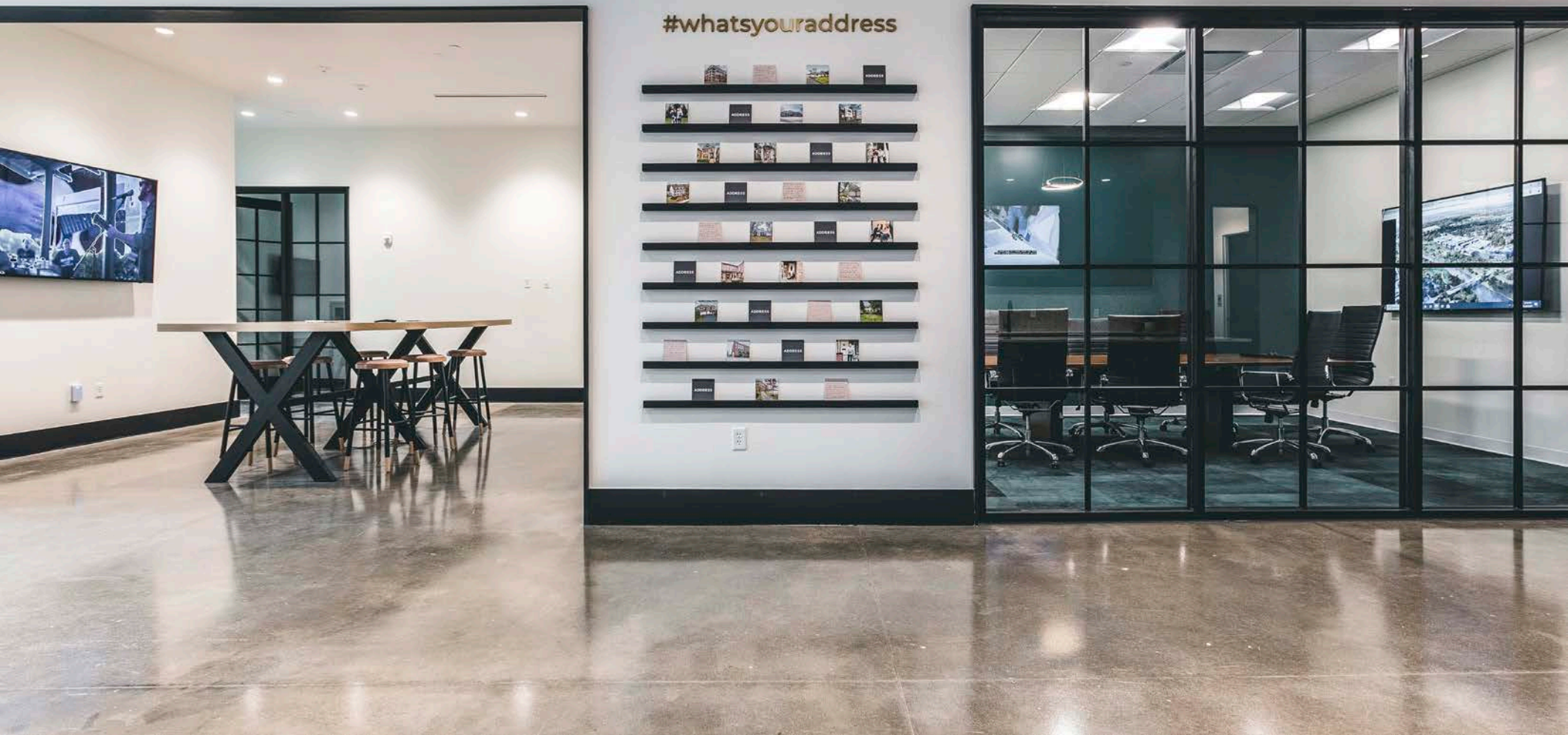
5 Home Sweet Home
Hosting Space

Address, a Crawford Hoying Sales Agency, combines and integrates its leasing and residential sales staff. Blurring the lines between residential and retail, a new design approach was implemented to create hospitality, neighborliness, and relaxation.



6 Comfort & Choice
Living Space

Mimicking the comfort and style of residential units, curated and stylized furniture pieces invite visitors to sit and stay awhile.



7 Testimonial Wall

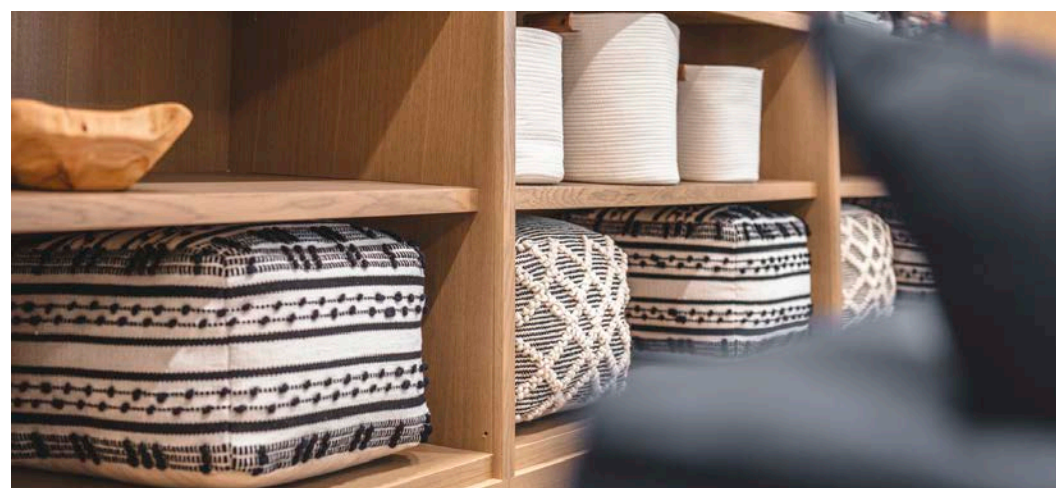
Address Display

Engaging residents and creating a personal connection to the brand, the Address wall displays handwritten resident testimonials and images.



8 Custom Design
Retail Display

Retail meets residential. A custom-designed peg-and-board retail wall displays merchandise from local vendors and businesses, creating community beyond the residential conversation.



The Details

Even the smallest details contribute to a cohesive design that is comfortable and welcoming.