



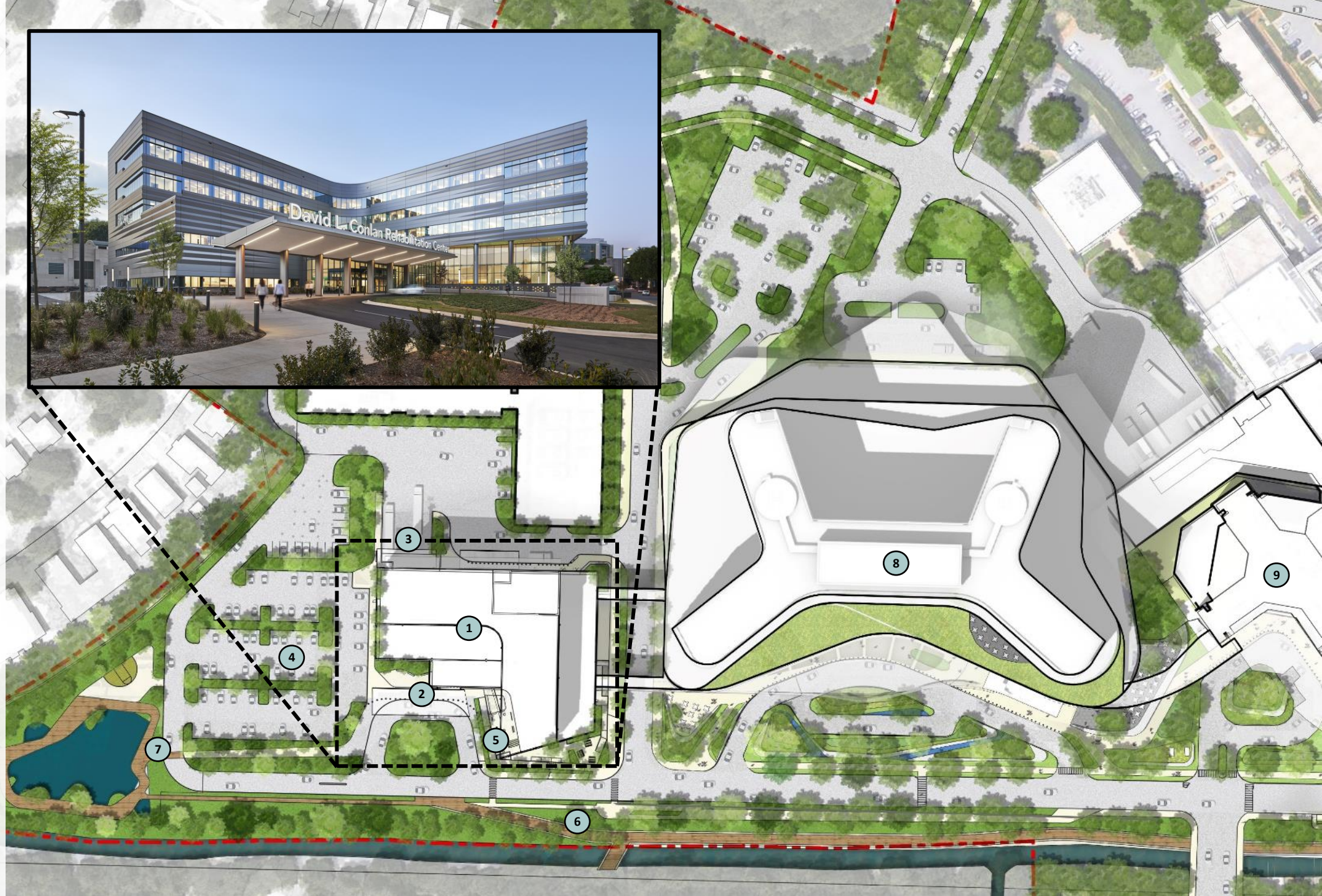
Atrium Health
Carolinas Rehabilitation Hospital
Charlotte, North Carolina

The new hospital grew out of the need to modernize an outdated 1950s-era facility and enable staff to increase the impact of their nationally recognized care, enhance the patient experience and create an identity for the program. Intensive stakeholder engagement sessions occurred during pre-design efforts leading to design guides that identified key priorities for staff, patients and families. These design toolkits focused on items such as facilitating independency and normalcy, prioritizing safety, inspiring hope and healing, and supporting the family's journey to create a welcoming experience and streamline discharge.

Just as tendon connects muscle to bone, the design of Carolinas Rehabilitation Hospital unites people to purpose. Through the visibility of personal rehab stories and the prioritization of accessibility and maneuverability, the building sinuously connects people to empowering experiences within a range of therapy spaces.

CONTEXT

Nestled along the Little Sugar Creek Greenway, south of Charlotte, the new rehabilitation hospital becomes the cornerstone of the Atrium campus.



- 1 Carolinas Rehabilitation Hospital
- 2 Main Entry
- 3 Loading Dock
- 4 Parking
- 5 Outdoor Therapy
- 6 Little Sugar Creek Greenway
- 7 Therapy Park
- 8 CMC New Bed Tower
- 9 CMC Main Hospital

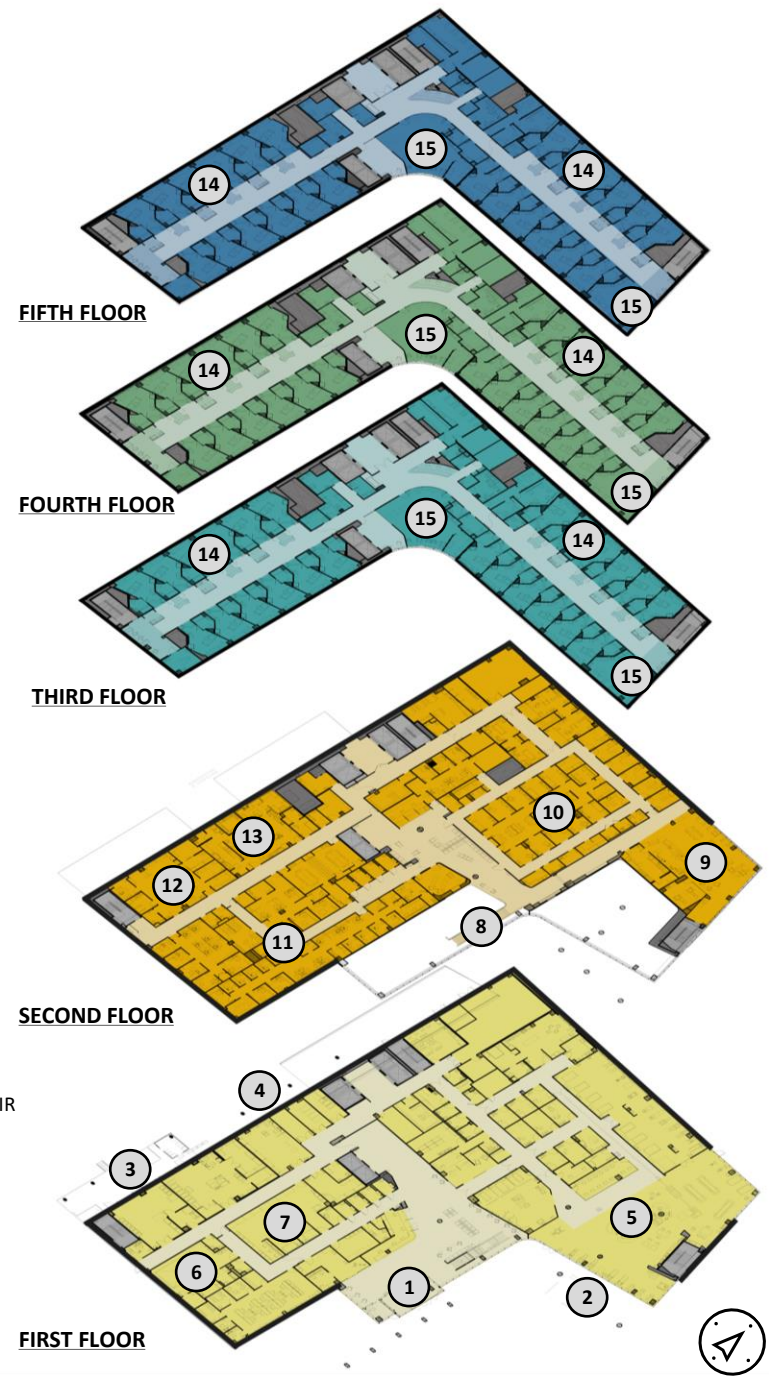


COLOR SPECTRUM SECTION DIAGRAM



GRAPHIC DEPLOYMENT

- 1 MAIN ENTRY + LOBBY
- 2 OUTDOOR THERAPY
- 3 LOADING DOCK
- 4 AMBULETTE ENTRY
- 5 THERAPY GYM
- 6 AQUATIC THERAPY
- 7 WHEELCHAIR CLINIC
- 8 COMMUNICATING STAIR
- 9 CAFÉ
- 10 OUTPATIENT CLINIC
- 11 ADMINISTRATIVE
- 12 PHARMACY
- 13 WARMING KITCHEN
- 14 PATIENT ROOMS
- 15 DAY SPACE



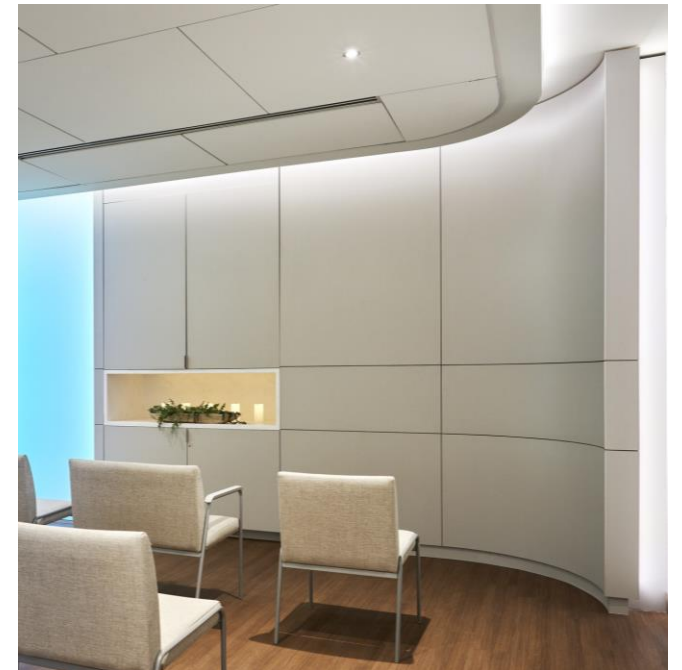


Atrium Health
Carolinas
Rehabilitation

Welcome

Assistive Technology
Centro de Tecnología Asistencial
Seating Clinic
Clínica de Asientos
Therapeutic Pool
Terapia Acuática





Uplifting architectural motifs subtly convey an optimistic message of progressive movement representative of a patient's journey towards their holistic rehabilitation.



Biophilic design principles were fundamental to the planning of Carolinas Rehabilitation. The thoughtfully sited building enables facility growth while highlighting access and views to nature with expansive windows.



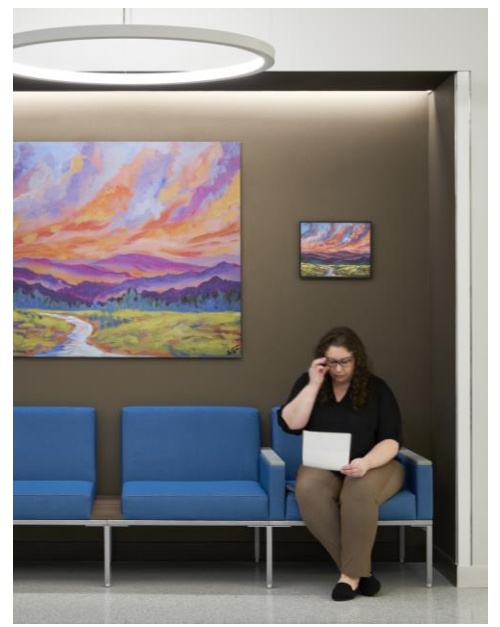
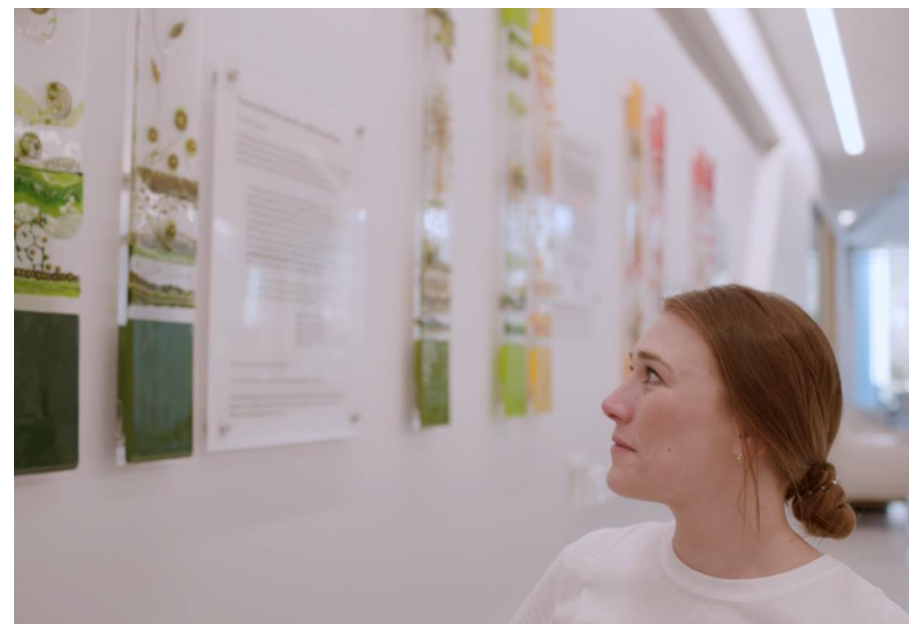
Circulation, waiting and community spaces were designed with intentional openness, allowing all users to feel welcome. Wider doorways, radiused corners and flush floor transitions increase maneuverability for patients, enable independence, and **empathize with a new normal.**



To build hope and wellness, the project unites design, environmental graphics and curated art that inspire, empathize and empower, encouraging patients to live without barriers.



Thoughtfully integrated artwork featuring minority, regional and mouth painting artists foster personal connections, create visual landmarking and provides positive distractions





Unique rehabilitation details and program elements such as distance markers, shuffleboard floor patterning and playful tile in the aquatic pool are integrated throughout





Intuitive wayfinding connects to place by deploying color and graphic themes based on the Carolina biomes: mountains, piedmont, coastal

