

# ROCKBRIDGE

Rockbridge, a private hospitality investment firm, wanted their new 30,000-square-foot headquarters in Columbus, OH to be a thoughtfully curated workspace that reflects their portfolio of unique hotel & restaurant concepts. From the moment you enter, you are greeted with lush greenery reminiscent of the outdoors, an inviting fireplace with residential inspired furnishings, and thoughtful details that can be found in many of their hotel experiences, creating an immediate connection to the company's culture.

Rockbridge challenged the design team to create a space that would encourage their team to return to the office and promote collaboration amongst their different departments.

The lobby is the central hearth and hub of their home, centered around a lounge and two-story atrium, which features a bar promoting informal social gatherings. A mezzanine connects the two floors while providing substantial natural light through the sawtooth glass roof above. A secret meeting room behind a bookcase & uniquely branded spaces provide opportunities for guests to explore the space and find moments of surprise and delight!

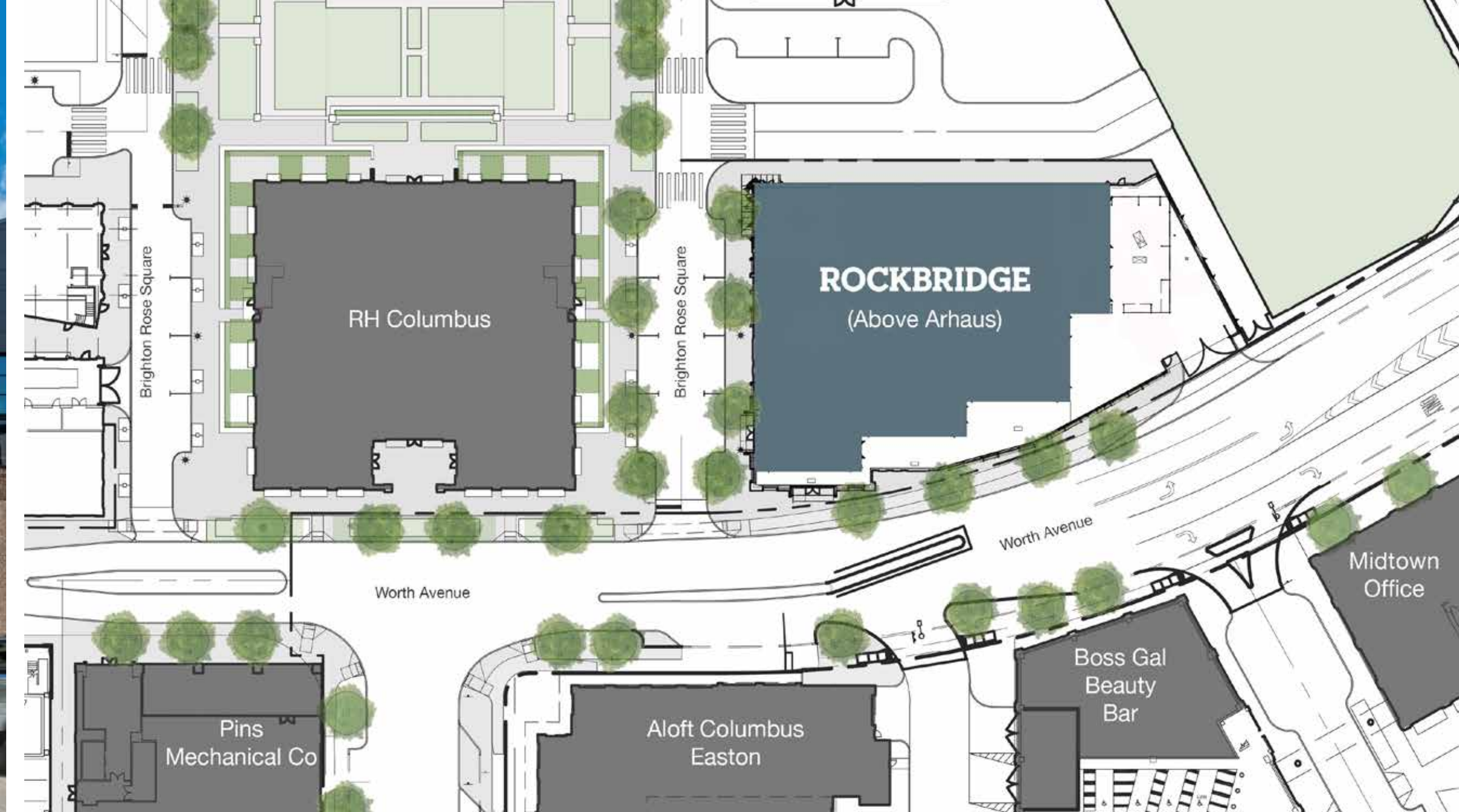
**Client**  
Rockbridge  
Corporate Headquarters

**Location**  
Easton Town Center  
Columbus, OH

**Area**  
30,000 sq. ft.

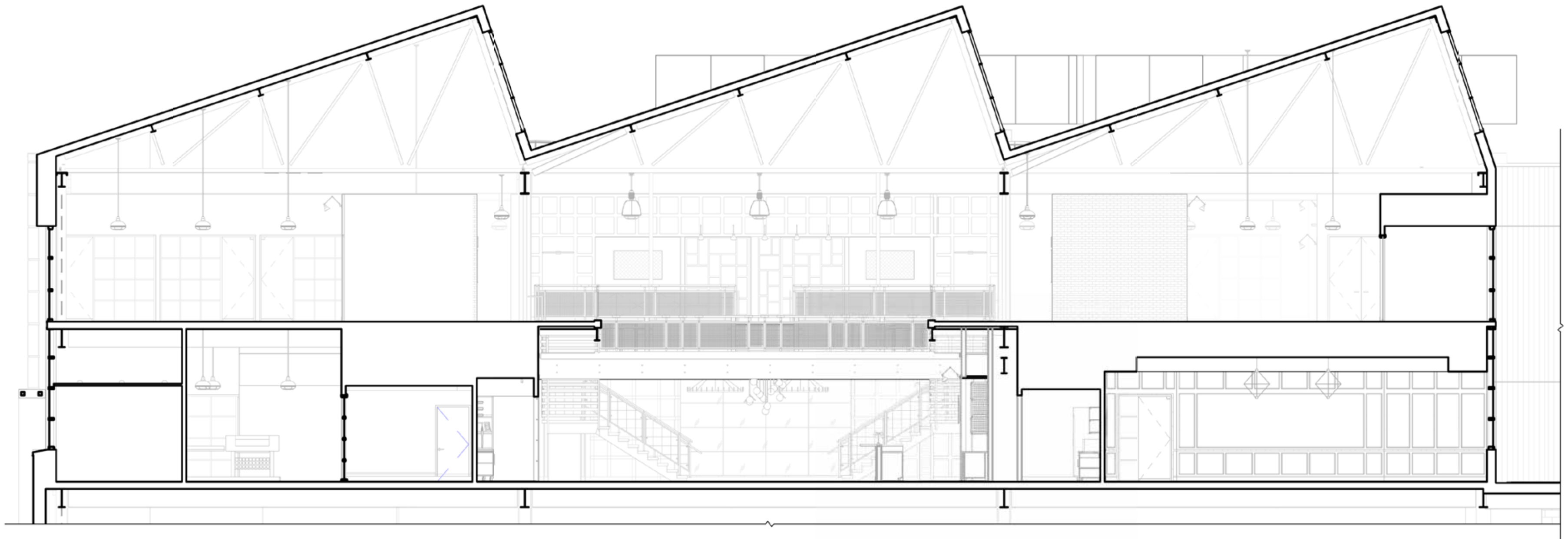






When Rockbridge was looking for a new RBHQ to house their ever-expanding team, they knew they wanted their physical space to be all about the experience and to reflect the core foundation of who they are and what they do. Rockbridge has been investing in building over 290 brands for more than 23-years. They are built on a foundation of Relevance, Relationships, Resilience, and Responsibility.

The project is located at 4124 Worth Ave, Columbus OH 43219 at Easton Town Center on the 2nd and 3rd floors and is composed of two 15,000 SF footplates with an internal connecting staircase. The existing building architecture features multiple stunning saw-tooth skylights that were an excellent opportunity to increase the visibility and connection to natural light.





**1 The Arrival**

First impression, connecting people with nature and guiding you inward

**2 The Hospitality Lounge**

The hearth and hub of their home, a welcoming place to gather

**3 The Atrium**

The social center that connects the second and third floors, allowing maximum light and ventilation

**4 The Open Office**

Connectivity to others, encouraging posture change throughout the day

**5 The Well-being**

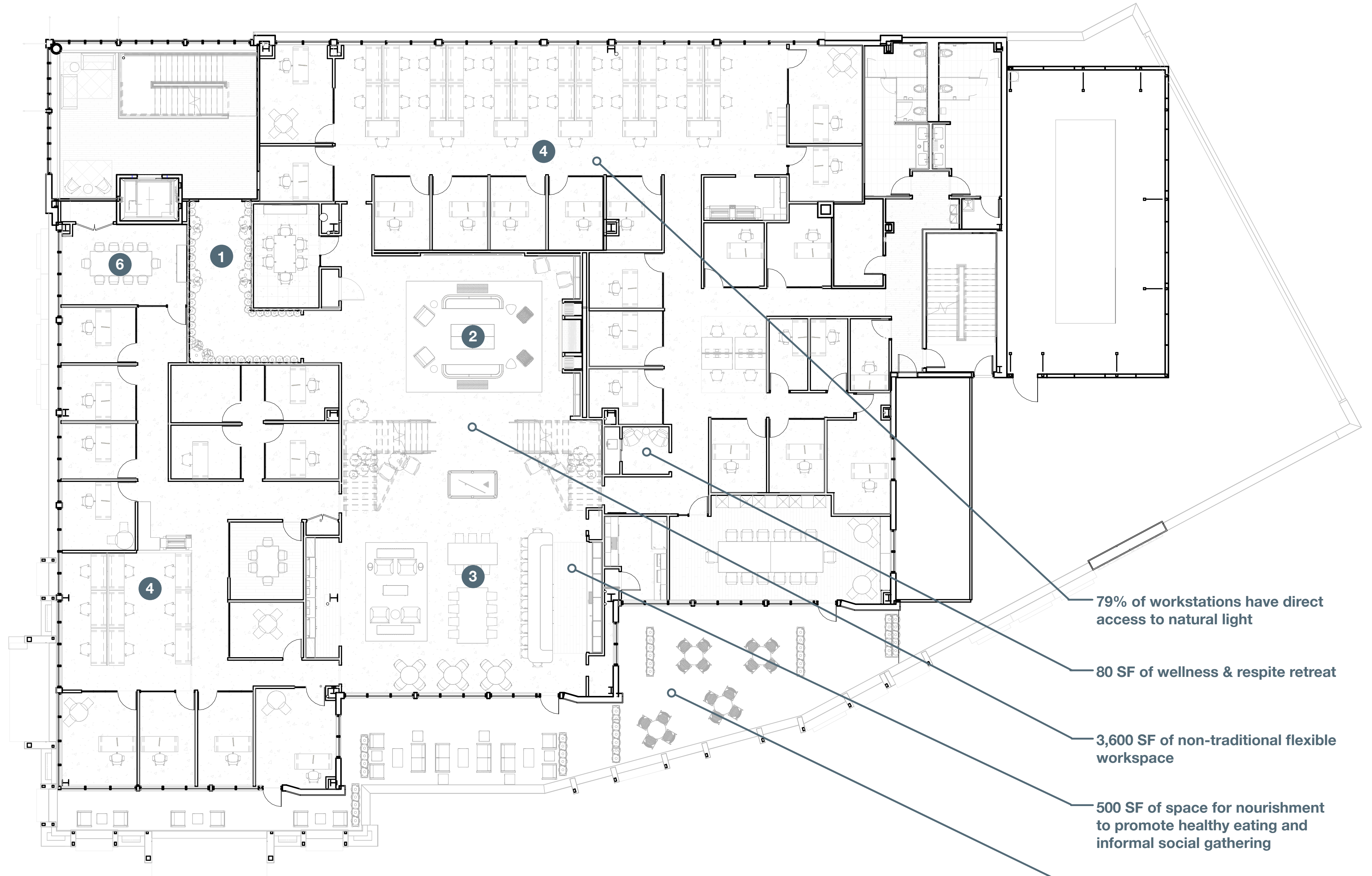
Environments that support health and well-being

**6 The Placemaking Spaces**

Collaborative meeting space to fund their philanthropic community efforts

**7 The Secret Room**

A surprise and delight moment that is unexpected and welcoming



Second Floor Plan

79% of workstations have direct access to natural light

80 SF of wellness & respite retreat

3,600 SF of non-traditional flexible workspace

500 SF of space for nourishment to promote healthy eating and informal social gathering

1,850 SF of exterior terrace patio dining and meeting space

**1 The Arrival**  
First impression, connecting people with nature and guiding you inward

**2 The Hospitality Lounge**  
The hearth and hub of their home, a welcoming place to gather

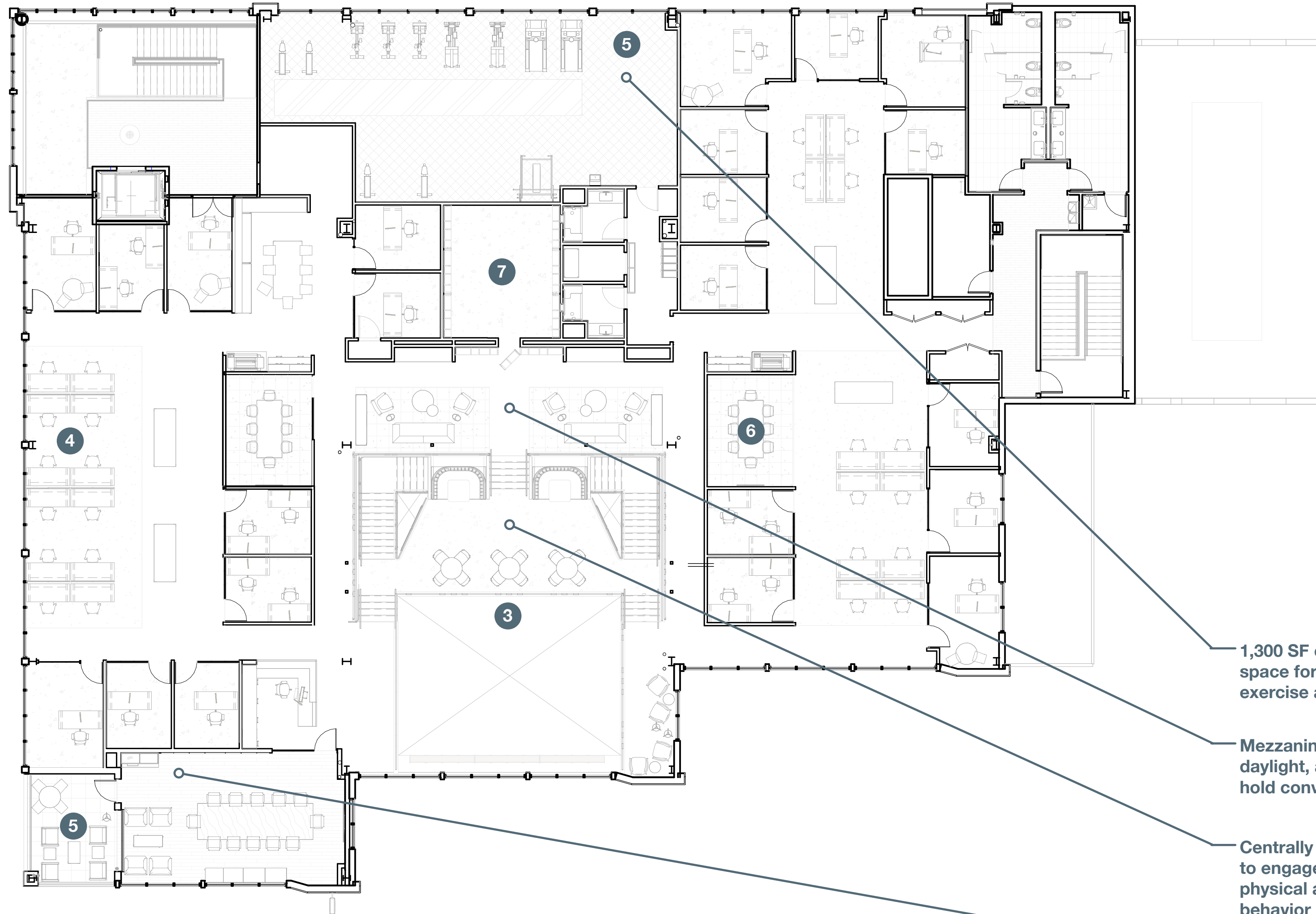
**3 The Atrium**  
The social center that connects the second and third floors, allowing maximum light and ventilation

**4 The Open Office**  
Connectivity to others, encouraging posture change throughout the day

**5 The Well-being**  
Environments that support health and well-being

**6 The Placemaking Spaces**  
Collaborative meeting space to fund their philanthropic community efforts

**7 The Secret Room**  
A surprise and delight moment that is unexpected and welcoming



1,300 SF of play and recreation space for structured & group exercise and movement

Mezzanine space with views, daylight, and seating groups to hold conversation

Centrally located connecting stairs to engage employees to promote physical activity and healthier behavior

Non-traditional CEO office with dynamic seating arrangements to foster a collaborative work environment

 **Third Floor Plan**

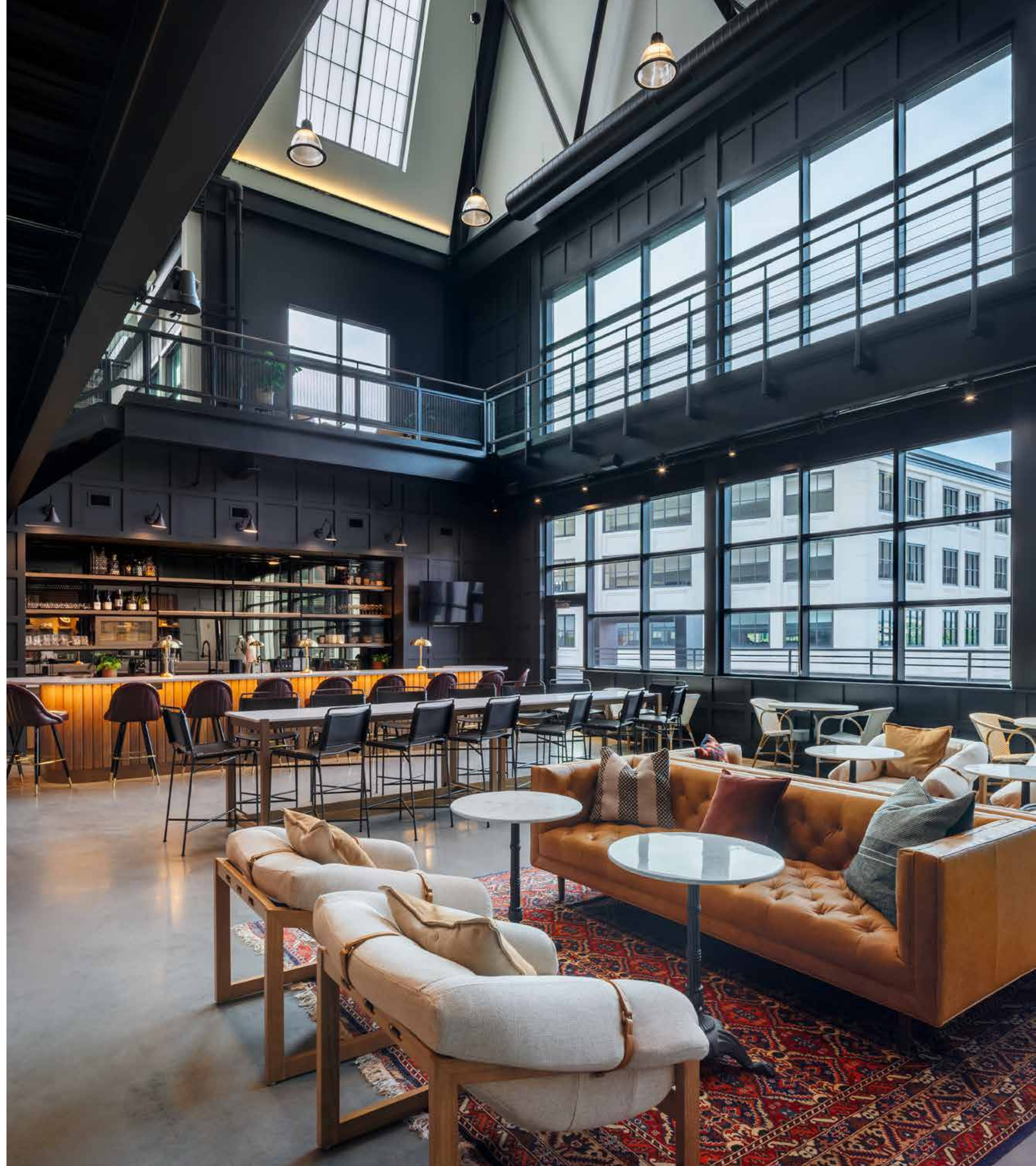


**1 The Arrival**

Upon entering their home, you are instantly transported at the lobby with its warm glowing luminaries and lush greenery reminiscent of the outdoors, connecting people with nature, and guiding you in. Welcome to the jungle, where the workday begins.







## 2 The Hospitality Lounge

The lobby is the central hearth and hub of their home, featuring an inviting fireplace, residential inspired furnishings and thoughtful details that are found in many of their properties. Rockbridge's operational activities are centered around this lounge, bar, and two-story atrium. It invites employees and guests to explore the space and find moments of surprise and delight.



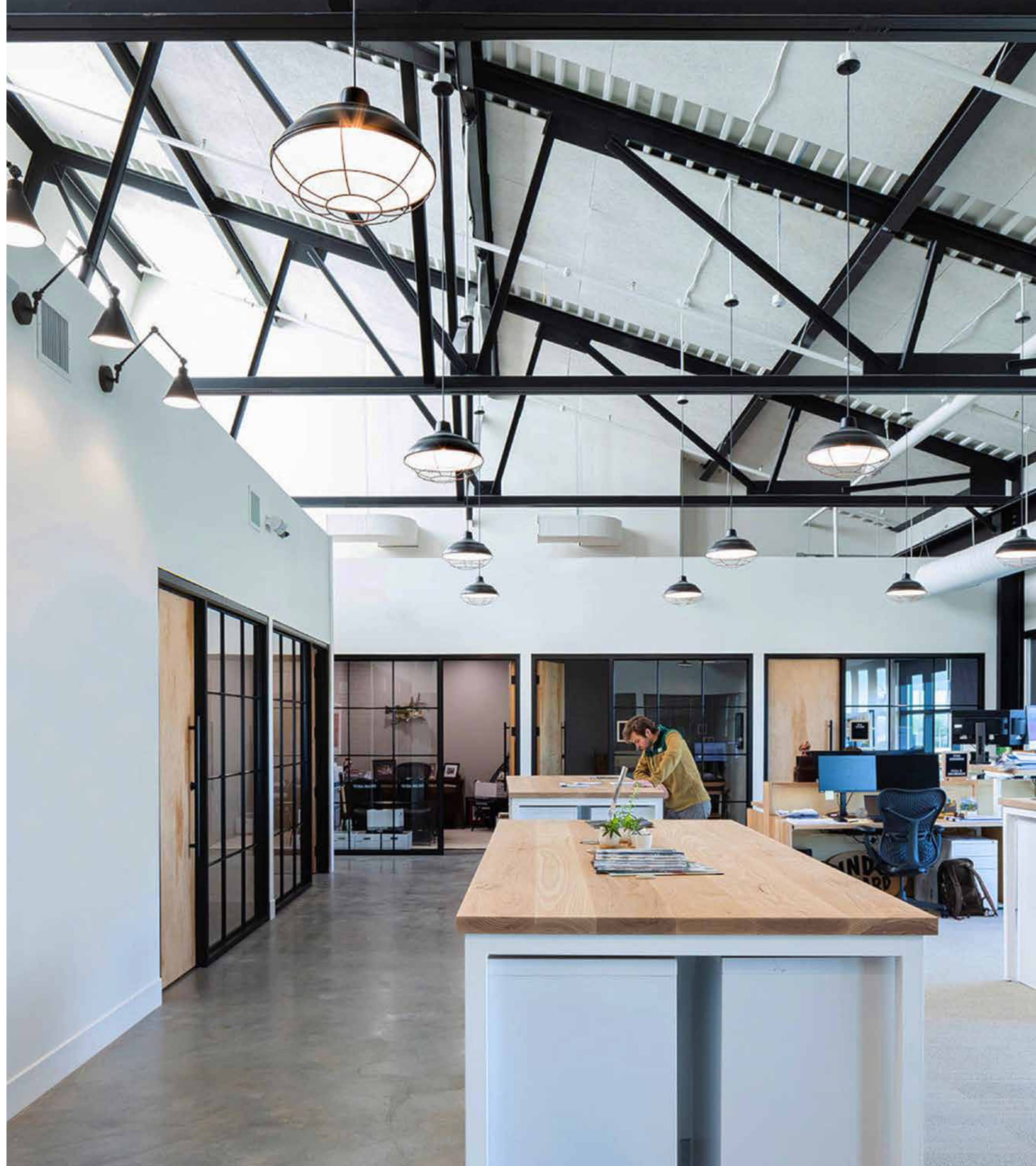


### 3 The Atrium

The atrium features a bar promoting informal social gathering, an upper level mezzanine, a secret room behind a bookcase, and connects the second and third floors while providing substantial natural light through the sawtooth skylights. Large, open staircases frame either side inviting you to explore and discover new areas to gather.

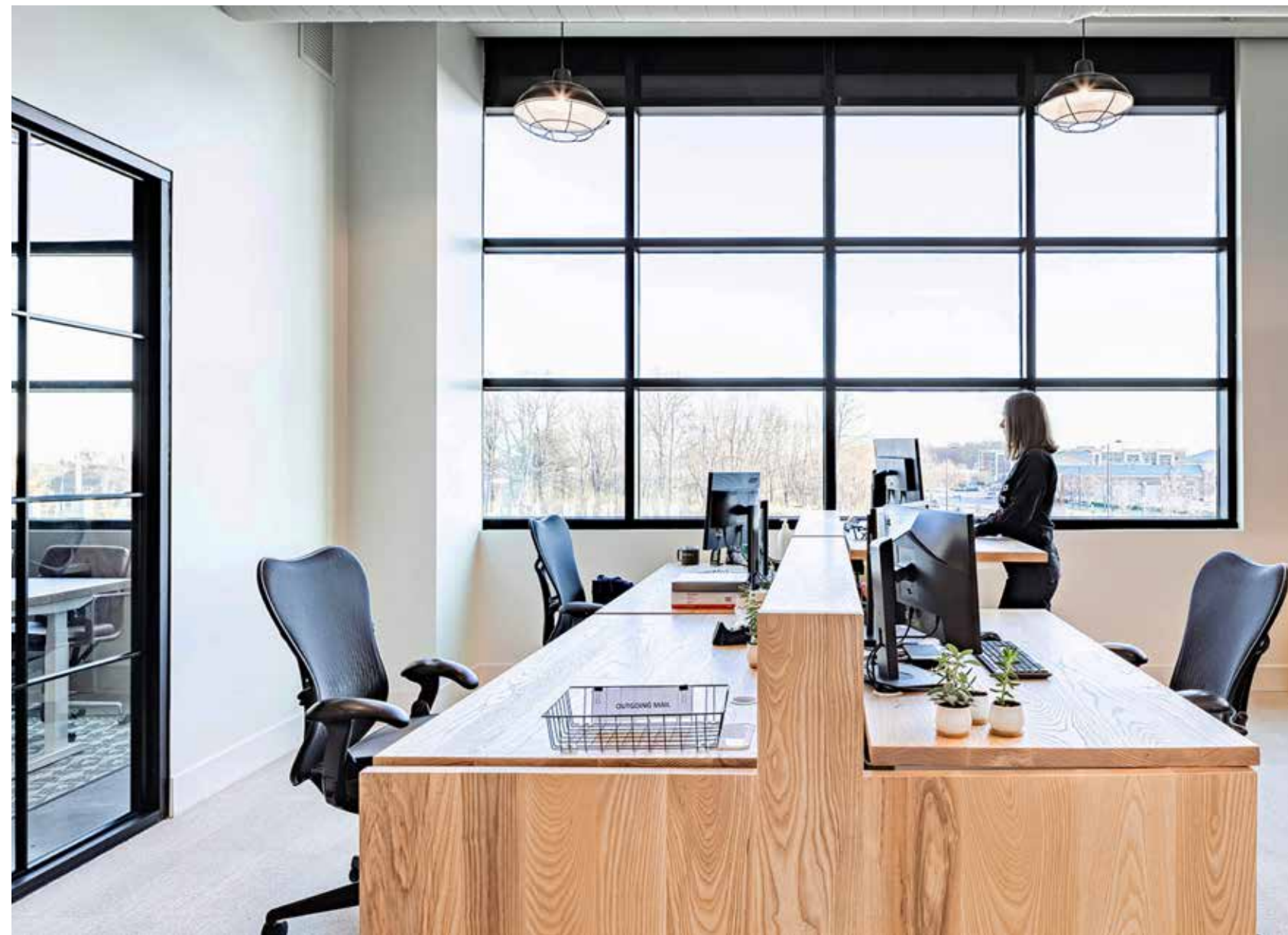






#### 4 The Open Office

The open office features direct access to natural light, connectivity to others, and height adjustable workstations encouraging movement and posture changes throughout the day, promoting a healthy lifestyle. "It's a healthy approach to working and the desk configurations provide flexibility to our team. Everyone in our office really likes them. It's a clean, beautiful look" Jim Merkel CEO.







## 5 The Well-being

With flourishing greenery and large interior garage doors that give access to fresh air, this office creates invigorating surroundings that connect employees to the outdoors. The Rock - Fitness Center is open to both employees and family members of Rockbridge. They also offer instructor led classes and post friendly fitness challenges to promote movement.





## 6 The Placemaking Spaces

There are many placemaking spaces throughout each floor that offer various types of seating opportunities. These spaces act like small getaways from one's desk. Rockbridge wanted to create a workplace rooted in hospitality that felt like stepping into one of their hotel experiences. Each space was uniquely curated and plays homage to each of their exclusive hotel personalities.



