



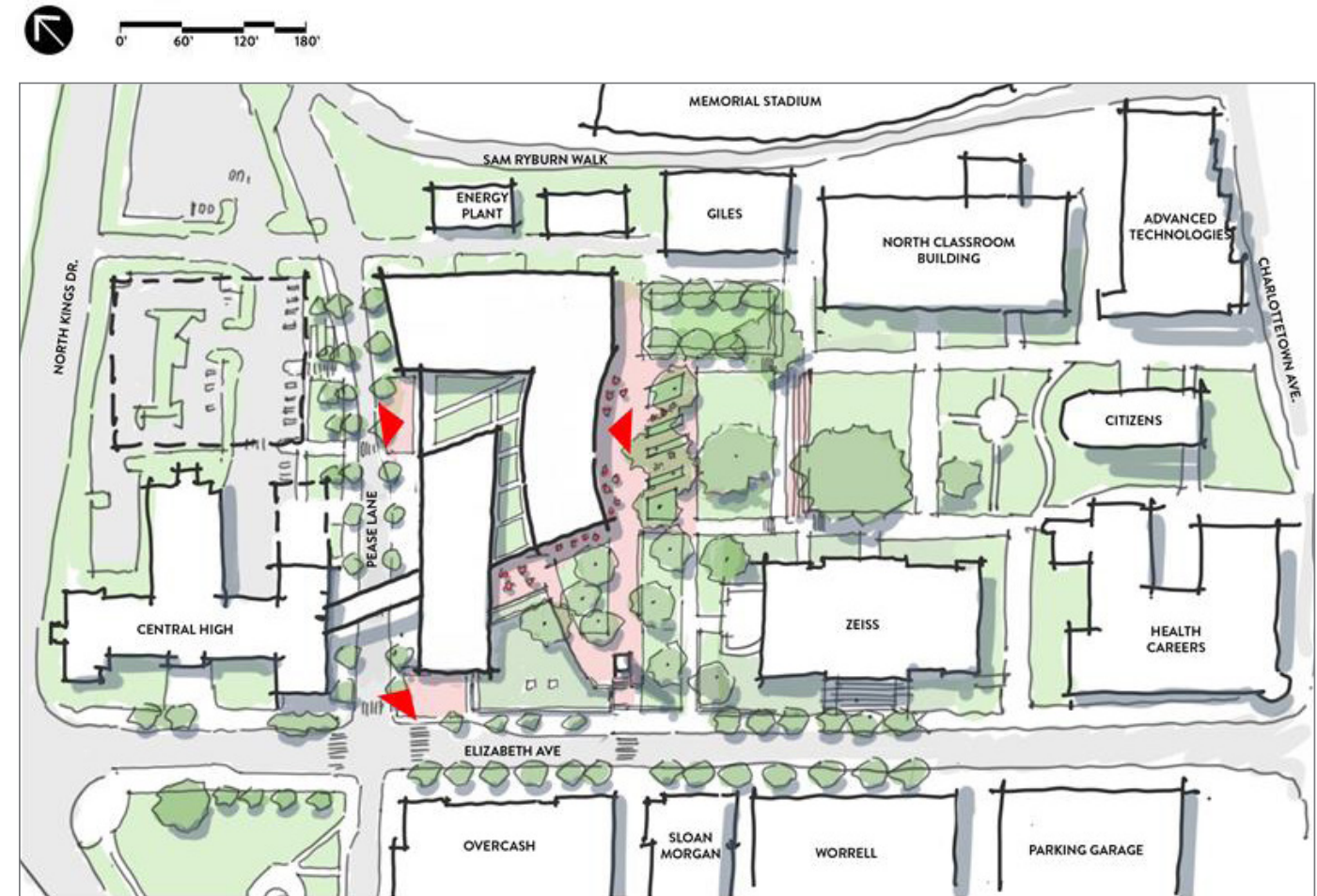
# THE PARR CENTER

Central Piedmont  
Community College

Charlotte, NC  
182,650 SF new construction

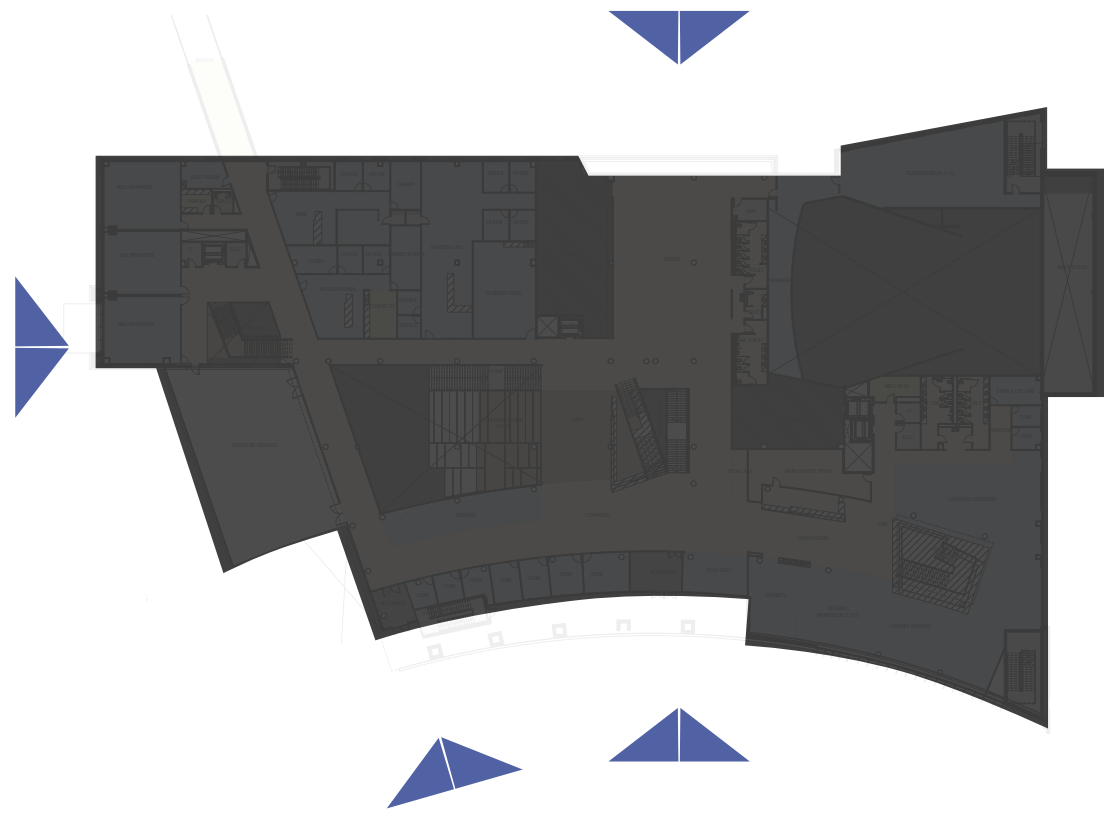
Located in the heart of an urban campus, The Central Piedmont Community College Parr Center is a hub for student activity— a place that connects people to resources and one another. As the largest community college in the area, the facility is designed to give commuter students the same amenities as a residential college. The hybrid building seamlessly co-locates student services, a new library, academic programming and amenities into a central hub, with an interior palette that blends the campus vernacular with the urban backdrop of the Charlotte skyline. Integrated into the historic campus, replacing limited-use “siloes” buildings, the project connects the college’s historic campus with an ambitious prioritization of equitable collaboration and sustainability that balances individual and group needs for empowerment, well-being, discovery, and community.

With a diverse student body of more than 50,000, Central Piedmont desired a place for students to call their own. The facility creates opportunities for student interaction and engagement in flexible configurations that support all types of active and collaborative learning, both virtual and in person. Individual and group collaboration spaces are sprinkled throughout, along with spaces designed for students accompanied by children/family. Quiet rooms for meditation, prayer, and refuge also support the diverse cultures served by this facility.

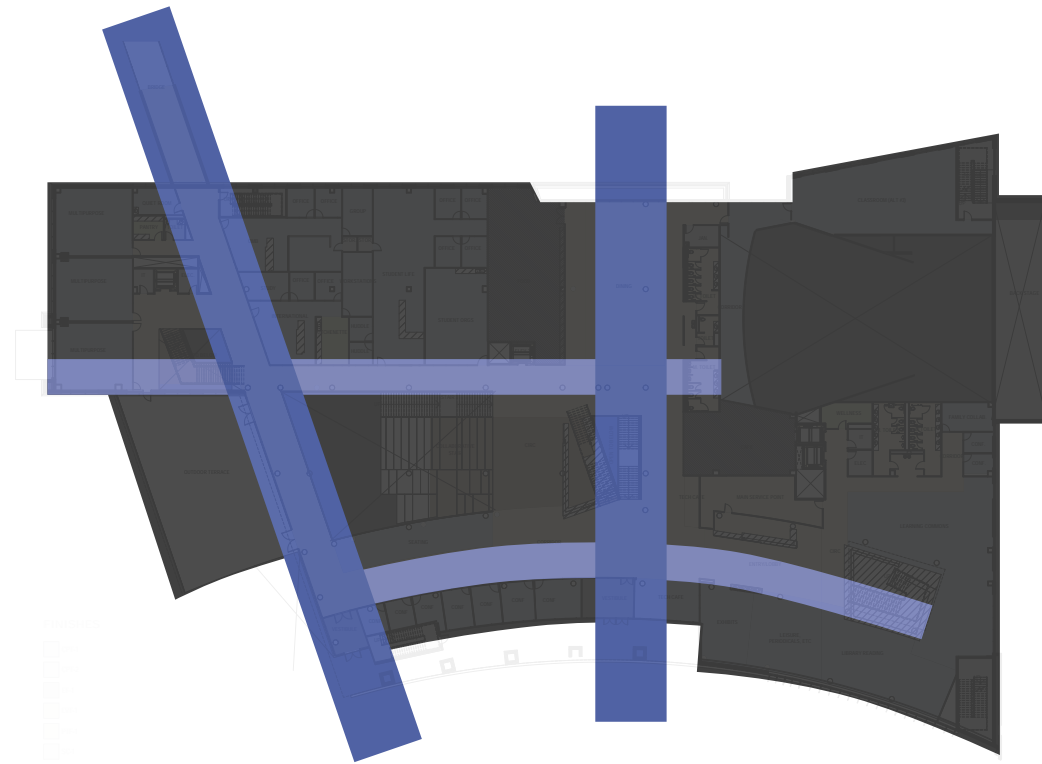


**POSITIONING**

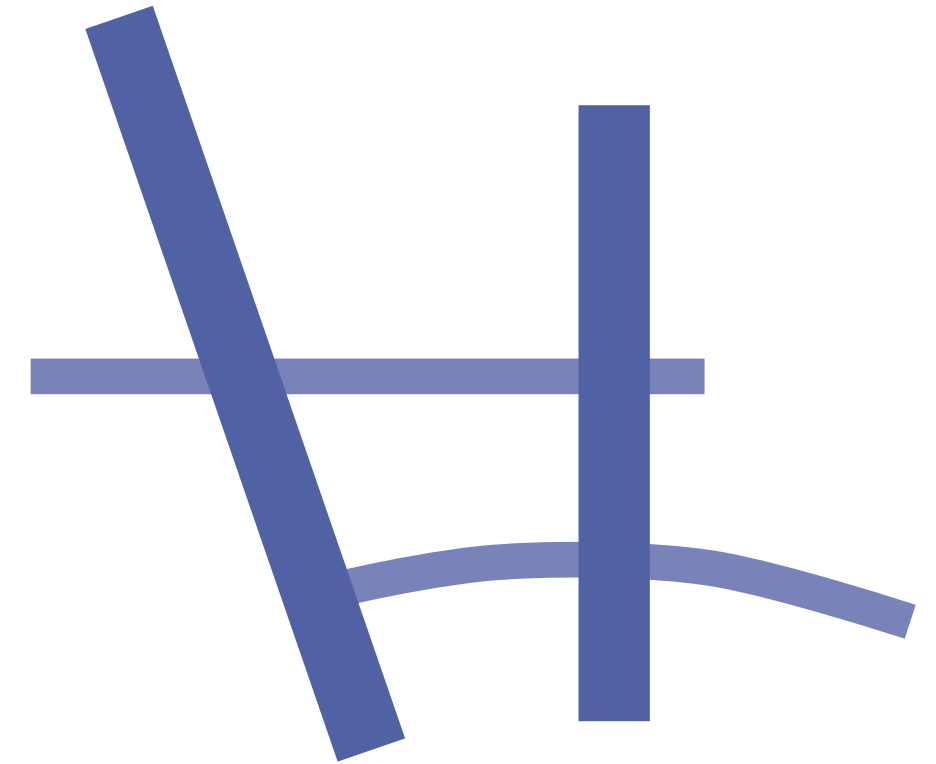
The facility replaces two limited-use buildings to create a new new “front door” to the Central Piedmont campus, with a prominent presence on Elizabeth Avenue. Nestled within a hillside, the building resolves former accessibility issues by serving as an interior street that connects the upper campus quad to the street level below. Bright and open multi-level spaces draw users to the central hub where the building is most active, and thus organizes access to the various program areas. Green roof courtyards and balconies provide a connection to each orientation by accommodating generous outdoor gathering spaces that overlook the downtown skyline, the busy urban street, and the virtually transparent extension of the campus quadrangle into the atrium.



entry points



primary circulation paths



conceptual diagram: abstract hashtag

## **DESIGN FOR SOCIAL EXPRESSION**

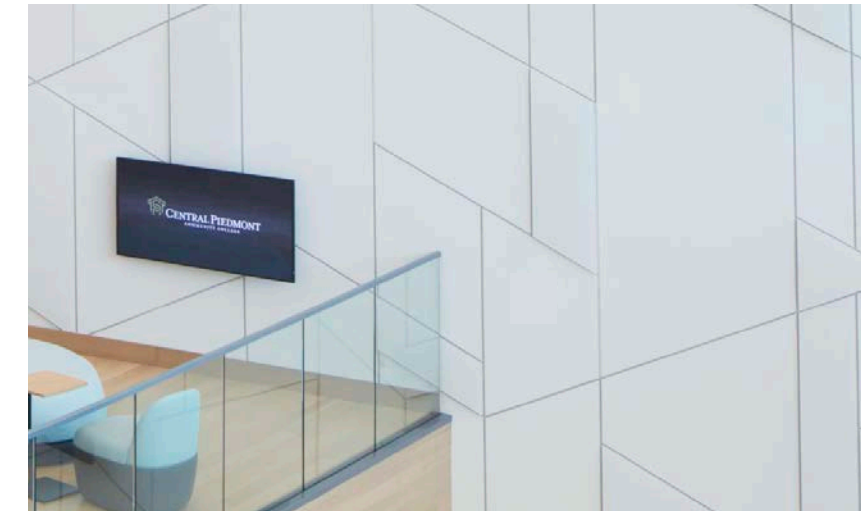
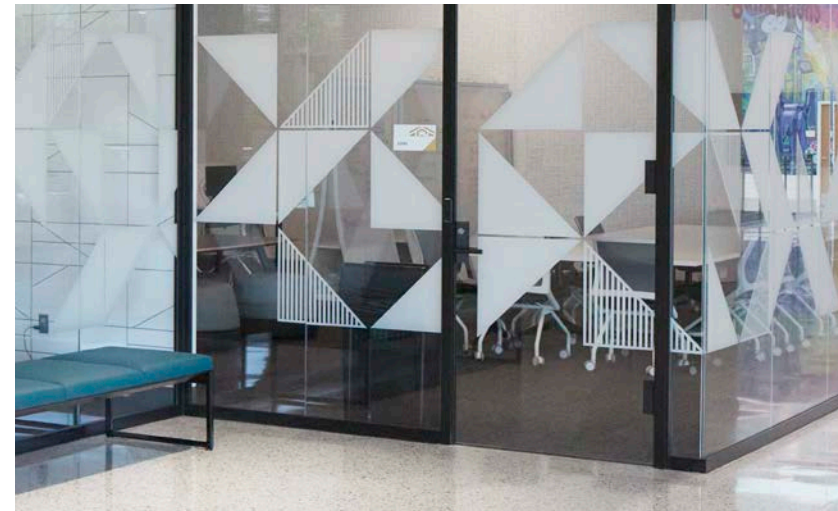
#EXPRESS, #ENGAGE, #SHARE, #LISTEN, #APPRECIATE, #CONTRIBUTE

Located adjacent to the college's main quad, the building extends pedestrian circulation from the outside in, with streamlined wayfinding designed to encourage serendipitous interactions. With four front doors, the building unites circulation patterns with visual and textural wayfinding throughout. Terrazzo flooring is used in contrasting colors to highlight the circulation patterns, resembling a hashtag and the social symbolism of the building.

### CAMPUS QUAD PALETTE INSPIRATION



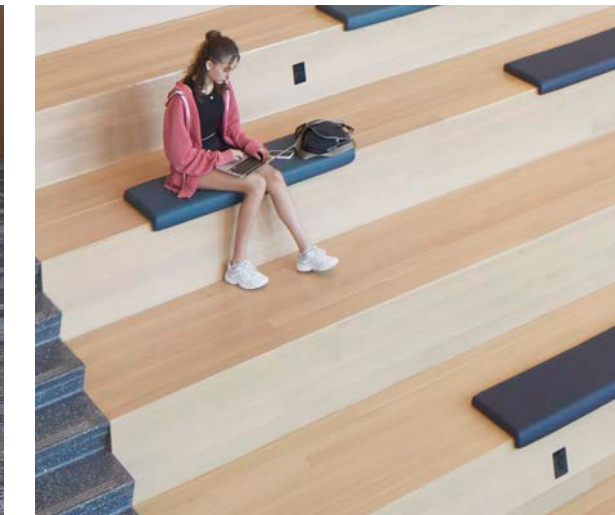
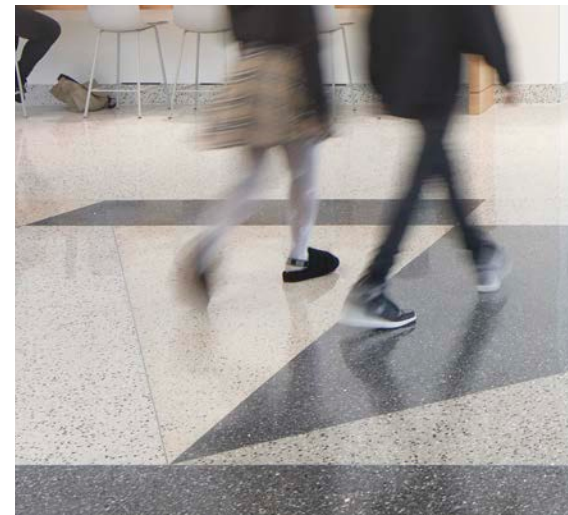
KEYWORDS  
NATURAL  
ORGANIC  
FOCUS  
ZEN  
TIMELESS  
TACTILE  
REPETITIVE



### DOWNTOWN PALETTE INSPIRATION

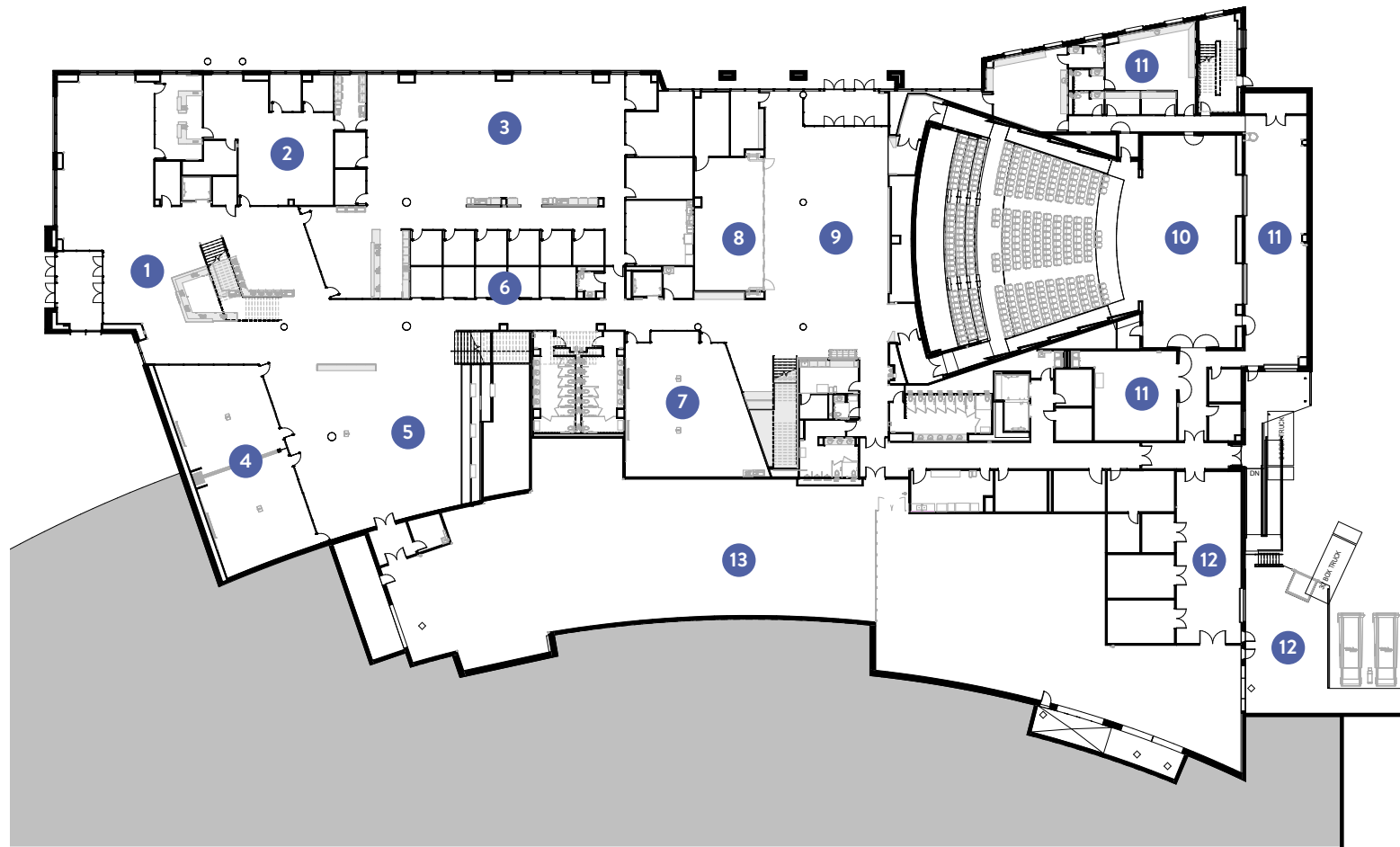


KEYWORDS  
BOLD  
BRIGHT  
ENERGETIC  
MOVEMENT  
CONTRAST  
SLEEK  
TRANSLUCENCY  
REFLECTIVE



## PALETTE INSPIRATION AND MATERIALITY

The interior material palette takes color, pattern, and textural cues from the connection to the campus quad and the views of downtown Charlotte. Wood materials bring a natural presence, paying homage to the famous old oak trees for which the state is known, and is used in wayfinding and program entries to promote intuitive wayfinding. Locally sourced materials such as terrazzo reduce environmental impact and maintenance. Furniture was provided by 12 vendors: an intentional strategy supporting the local economy and historically underutilized businesses while encouraging US-made products.



## GROUND LEVEL PLAN

- |                      |                           |
|----------------------|---------------------------|
| 1 WELCOME CENTER     | 8 GALLERY                 |
| 2 ADMISSIONS OFFICE  | 9 PRE-FUNCTION            |
| 3 STUDENT SERVICES   | 10 THEATER                |
| 4 MULTIPURPOSE ROOMS | 11 THEATER SUPPORT        |
| 5 STUDENT COMMONS    | 12 SHIPPING AND RECEIVING |
| 6 HUDDLE ROOMS       | 13 STORAGE                |
| 7 CLASSROOM          |                           |



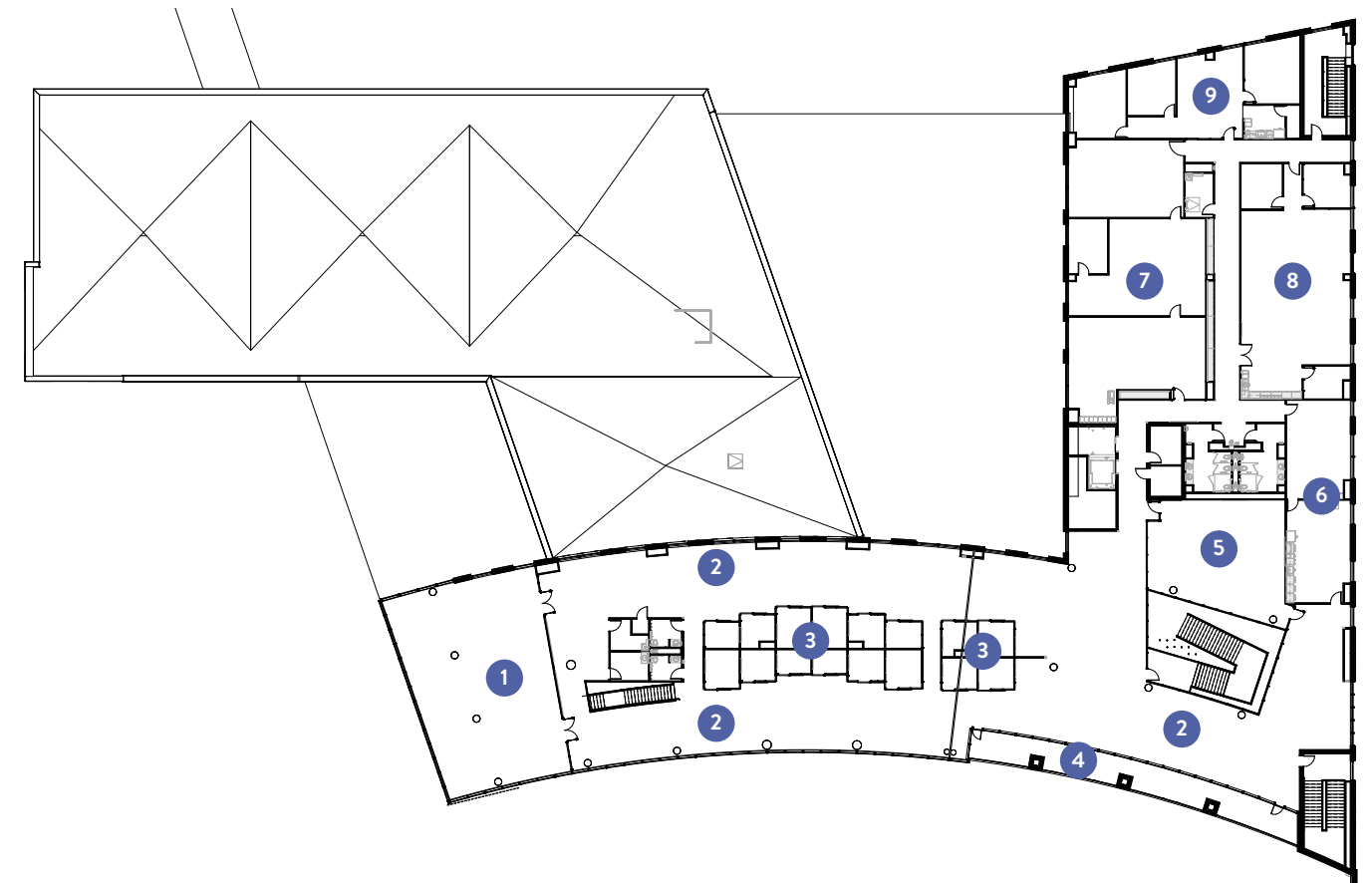
## QUAD LEVEL PLAN

- |                                |                                             |
|--------------------------------|---------------------------------------------|
| 1 OUTDOOR TERRACE              | 9 WELCOME DESK                              |
| 2 FLEX MULTIPURPOSE ROOMS      | 10 HUDDLE ROOMS                             |
| 3 OFFICE OF MENTORING & BRIDGE | 11 HAGEMEYER LIBRARY                        |
| 4 INTERNATIONAL PROGRAMS       | 12 LIBRARY SUPPORT                          |
| 5 STUDENT LIFE                 | 13 FAMILY HUDDLE ROOMS                      |
| 6 STUDENT ORGS                 | 14 CONNECTOR TO ADDITIONAL STUDENT SERVICES |
| 7 FOOD SERVICE VENDOR          |                                             |
| 8 DINING                       |                                             |



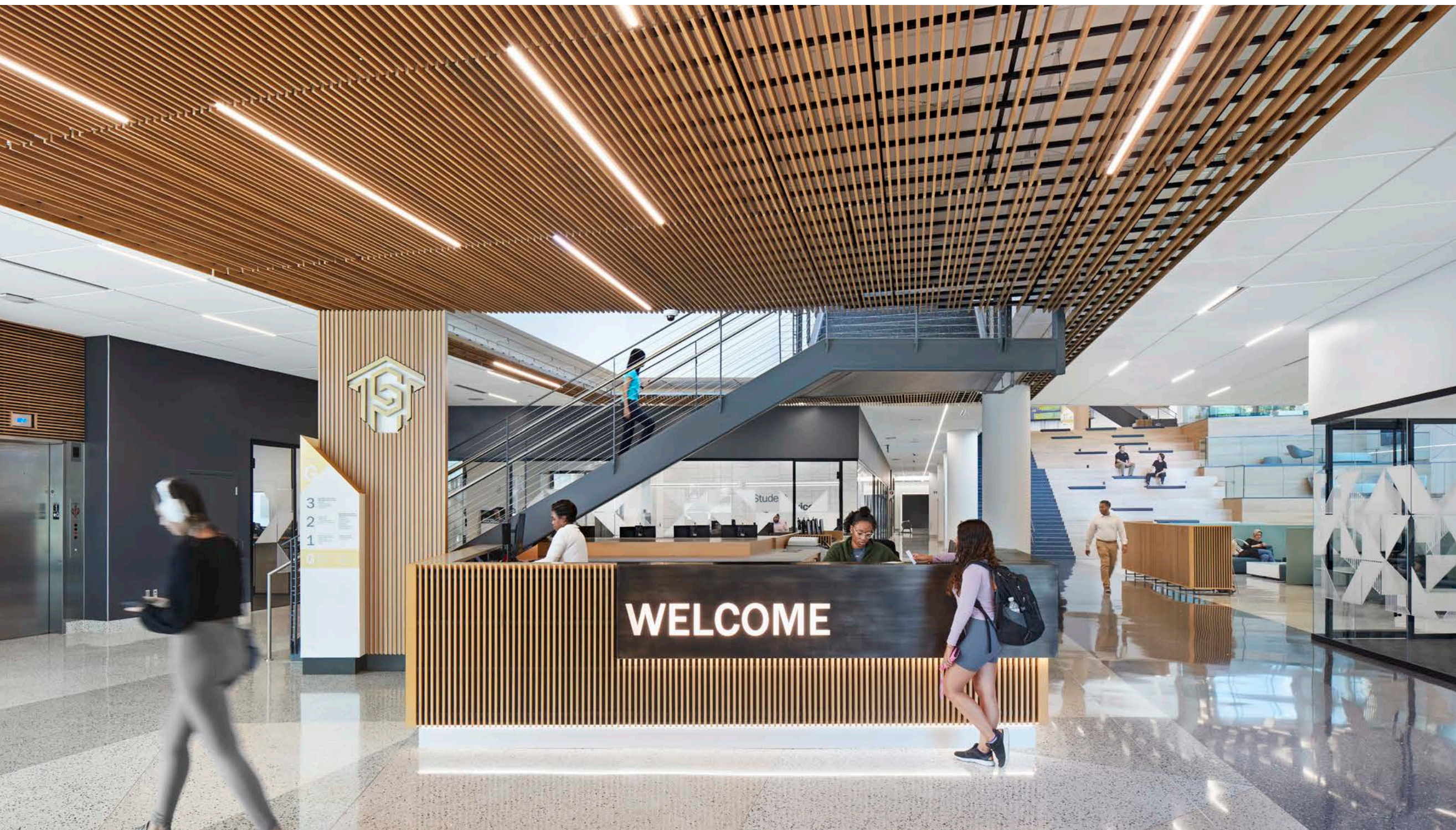
## LEVEL 02 PLAN

- |                            |                              |
|----------------------------|------------------------------|
| 1 TESTING CENTER           | 9 HUDDLE ROOMS               |
| 2 ADMINISTRATIVE OFFICES   | 10 COMPUTER LAB              |
| 3 ADVISING CENTER          | 11 TECH SANDBOX / MAKERSPACE |
| 4 ACADEMIC LEARNING CENTER | 12 GREEN ROOM & AUDIO BOOTHS |
| 5 EVENTS SPACE             | 13 LIBRARY STACKS            |
| 6 EVENTS BALCONY           | 14 CHARLOTTE SKYLINE TERRACE |
| 7 CLASSROOM                | 15 LIBRARY BALCONY           |
| 8 FACULTY HUB              | 16 GREEN ROOF                |



## LEVEL 03 PLAN

- |                             |                          |
|-----------------------------|--------------------------|
| 1 READING ROOM              | 6 STAFF AMENITIES        |
| 2 QUIET STUDY               | 7 LIBRARY ARCHIVES       |
| 3 HUDDLE ROOMS              | 8 RESOURCE SERVICES      |
| 4 LIBRARY BALCONY           | 9 ADMINISTRATIVE OFFICES |
| 5 ACTIVE LEARNING CLASSROOM |                          |

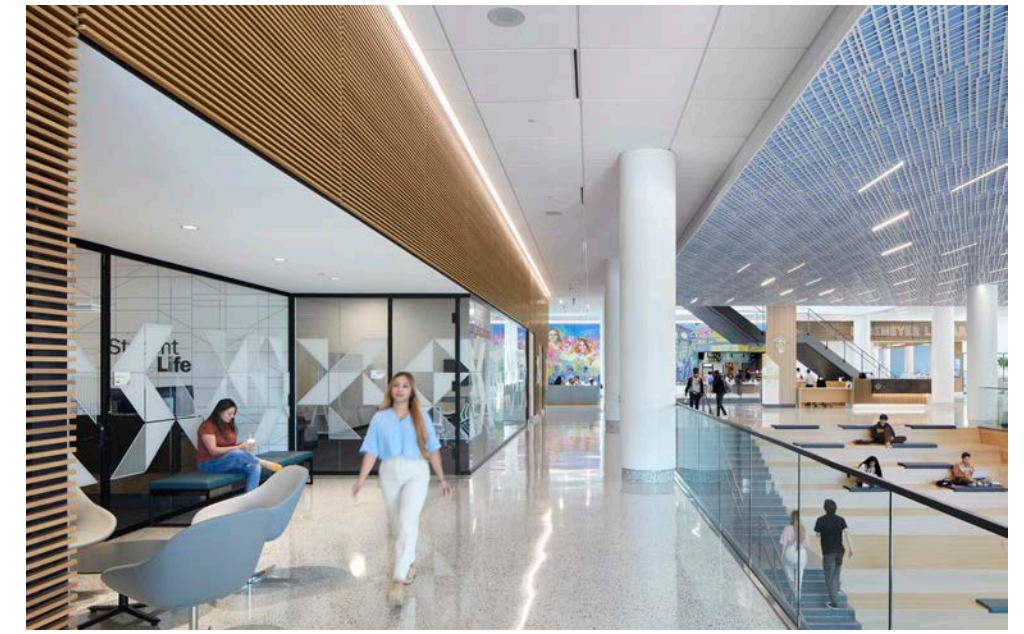
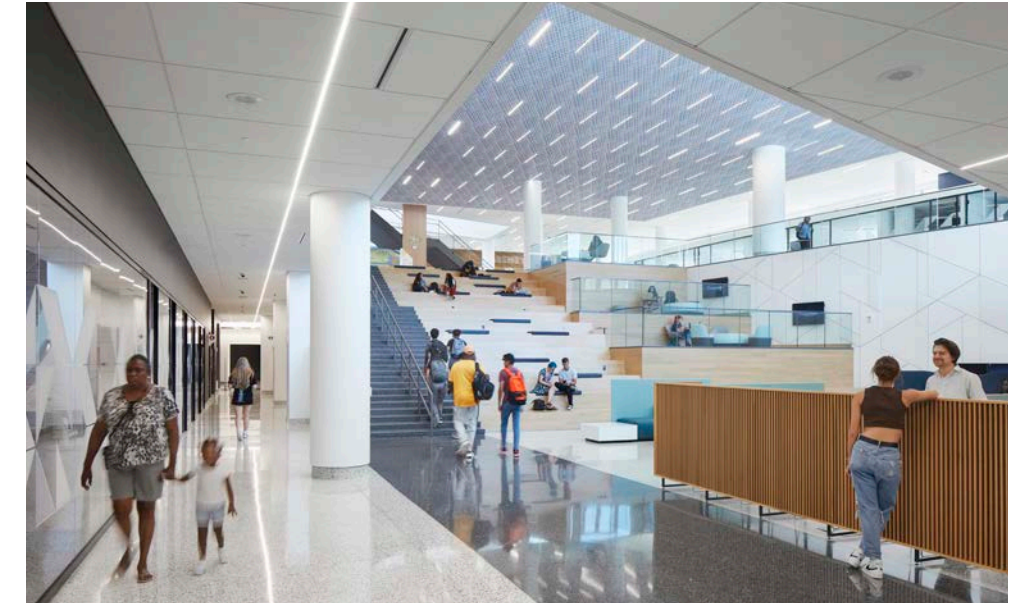


### **STUDENT SUCCESS CENTER HUB**

The design concentrates on the clear identification of functions and a sequence of welcoming spaces that pay close attention to the needs of first-generation students. The Welcome Center and Student Services entry is located adjacent to the public streetcar stop. Wood-slatted treatments provide a visual cue, strategically highlighting service touchpoints such as help desks.



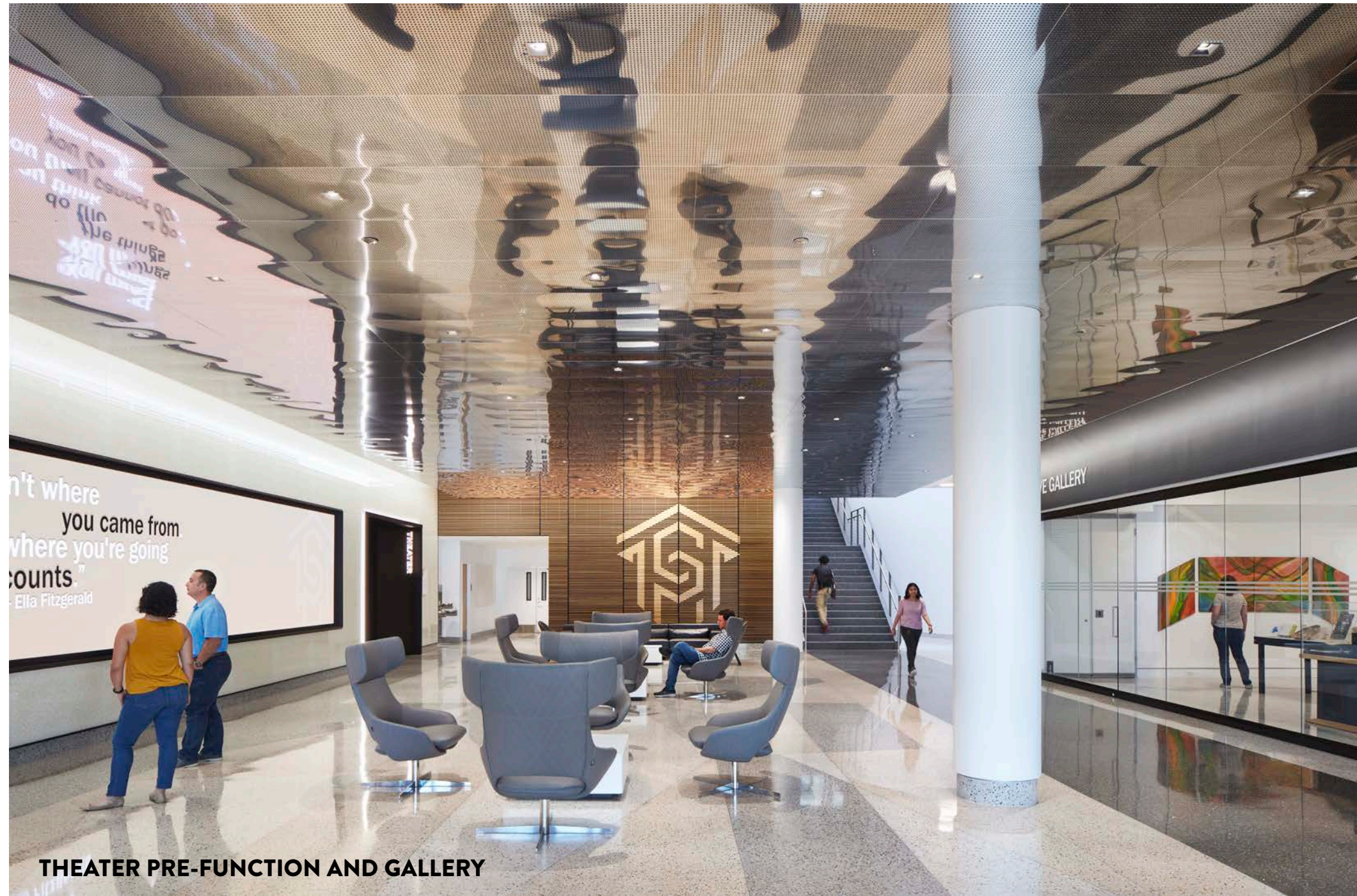
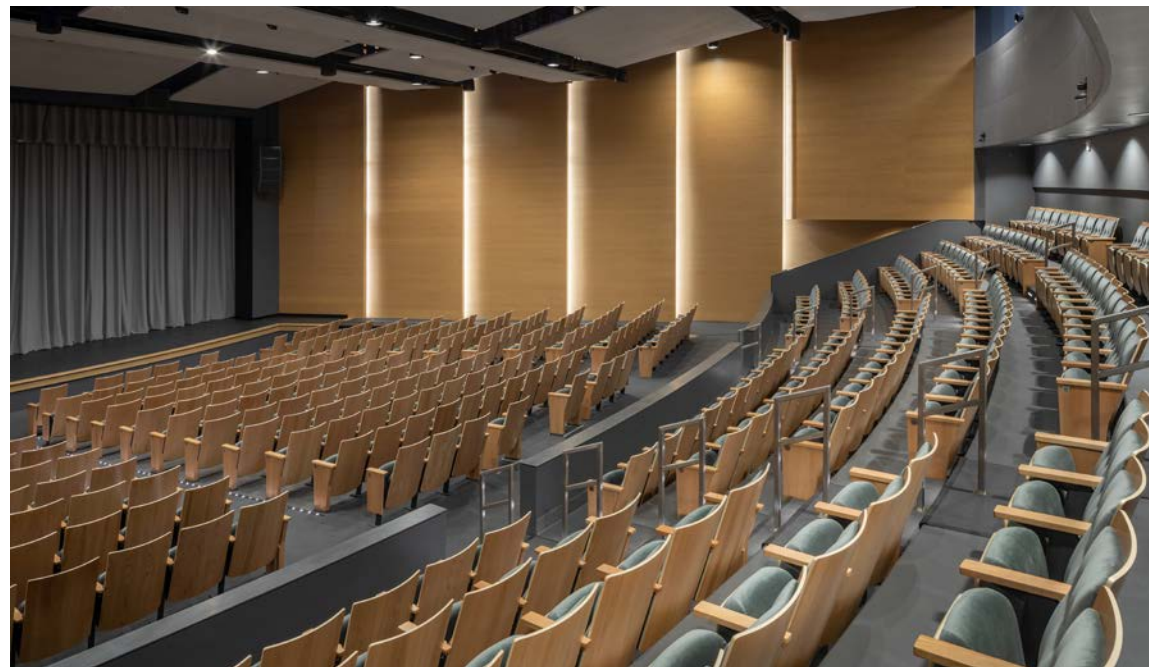
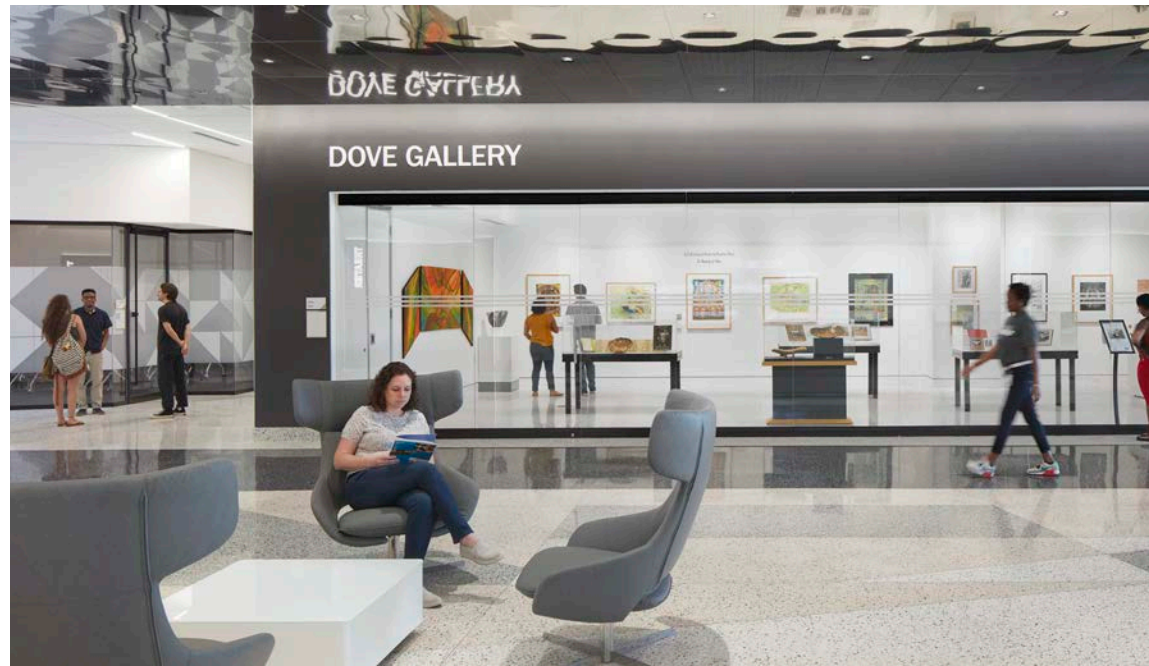
**COLLABORATIVE STAIR**



**DESIGNING FOR SOCIAL CONNECTION**

The central collaborative stair provides a “third space” for students to meet, work, and socialize, enriching the cultural and social connections of the community. Wrapped with amenities like grab-and-go dining, study lounges, technology labs, and art installations, the Parr Center encourages commuter students to stay on campus for extended periods of time.





**THEATER PRE-FUNCTION AND GALLERY**

## **DESIGNING FOR COMMUNITY**

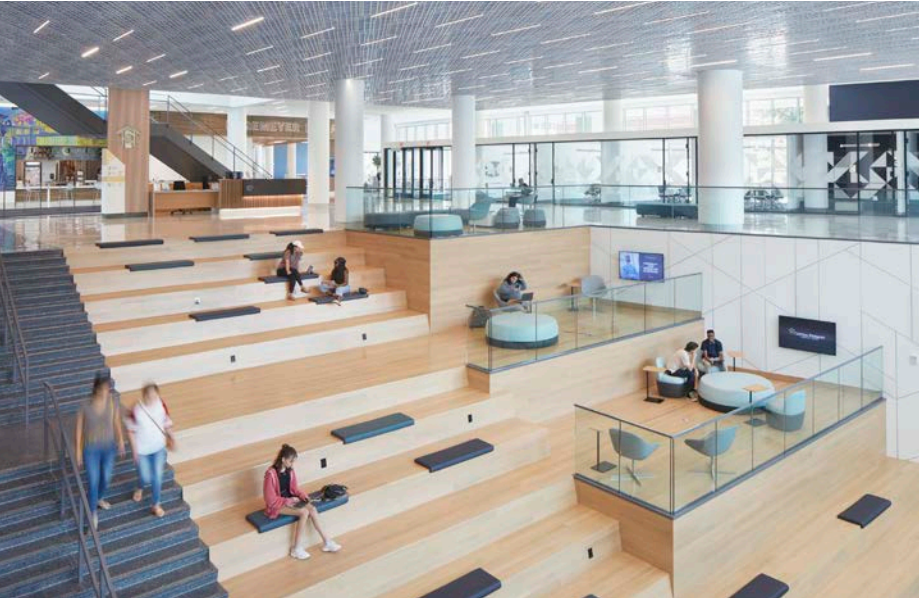
The Parr Center includes a 450-seat performance theater with a partial fly loft and theater support. The theater drives revenue as a community asset with an audience experience on par with high profile venues in downtown Charlotte. The theater pre-function space features an expansive video wall and an art gallery, both intended to support student work alongside local artists. To create depth and height, a mirrored metal ceiling featured outside the theater draws inspiration from the grandiose experience of theaters in nearby downtown Charlotte.

**QUAD ENTRANCE**



**DESIGNING FOR CAMPUS CONNECTION**

The quad entrance allows for a direct connection to the heart of campus. This entrance provides easy access to Hagemeyer Library, dining services, and Student Services. The dining area is an extension of Designing for Community. Laid out with the intent to create space to commission a local artist to pay homage to the history of the college, recording the present, and inspiring future students. This mural draws the eye from the quad entrance and invites students to converge over a bite to eat.



# HAGEMEYER LIBRARY



POSSIBILITY  
LIVES  
BEYOND THE  
CLASSROOM.

HAGEMEYER LIBRARY ENTRANCE



## DESIGNING FOR COLLABORATION

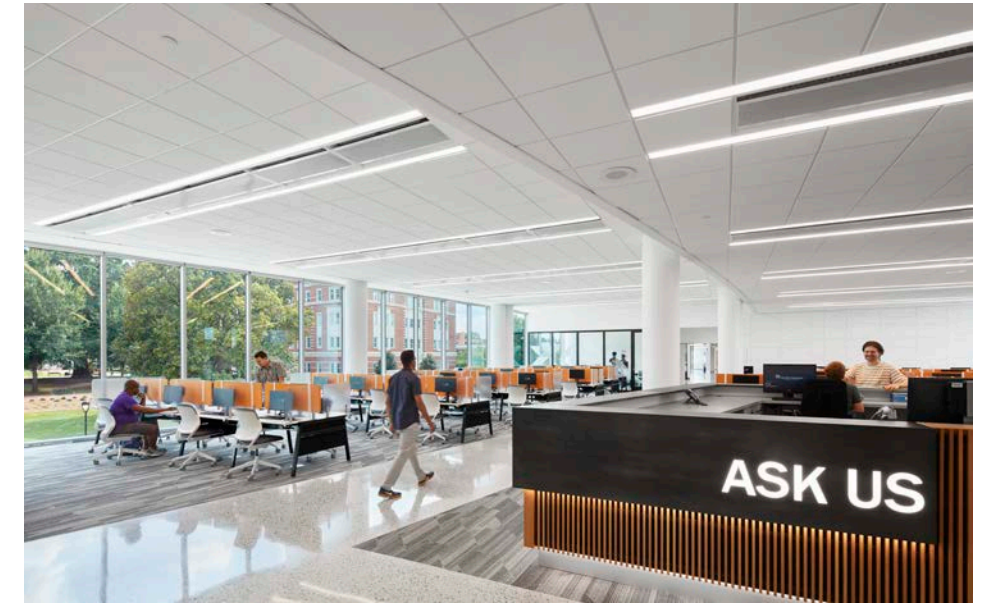
Serendipitous interactions unfold across every floor of the building, with the use of active stairs and glass-fronted spaces that enhance collaboration. The library is designed to support group collaboration on the lower level and quiet study on the upper floors.



LIBRARY COLLABORATIVE STUDY

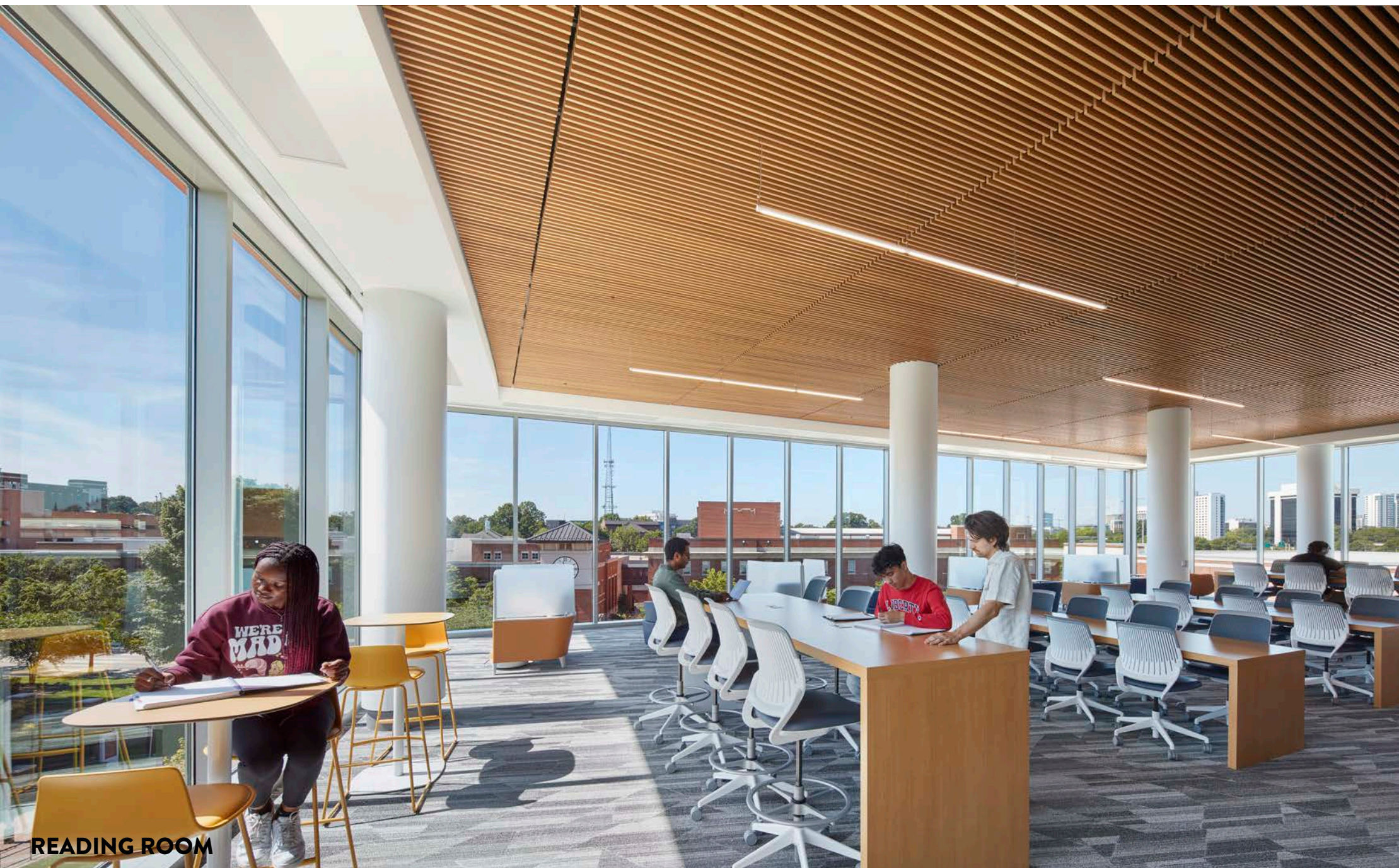


**STUDY SPACES**



## **DESIGNING FOR LEARNING**

Serendipitous interactions unfold across every floor of the building, with the use of active stairs and glass-fronted spaces that enhance collaboration. The library is designed to support group collaboration on the lower level and quiet study on the upper floors. Independent workstations sit adjacent to quiet pods where small groups can meet and study in a semi-private space. A “tech sandbox” makerspace allows students to gain hands-on experience and explore their passions. Playful geometric angles throughout the space help create continuous sightlines within the building while visually connecting activity between levels.



**READING ROOM**

**DESIGNING FOR FOCUS**

The “jewel” on the third floor of the library is a quiet Reading Room with 180 degree views of the campus and downtown Charlotte, where students aspire to begin their careers after graduation.





PARR CENTER

HAGEMeyer  
LIBRARY

