



# Jane E. Heminger Hall

LOCATION	CLIENT	CATEGORY	AREA
1577 Neil Avenue, Columbus, OH 43210	The Ohio State University	Learn - Higher Ed	41,000 SF

## Gateway to health and wellness.

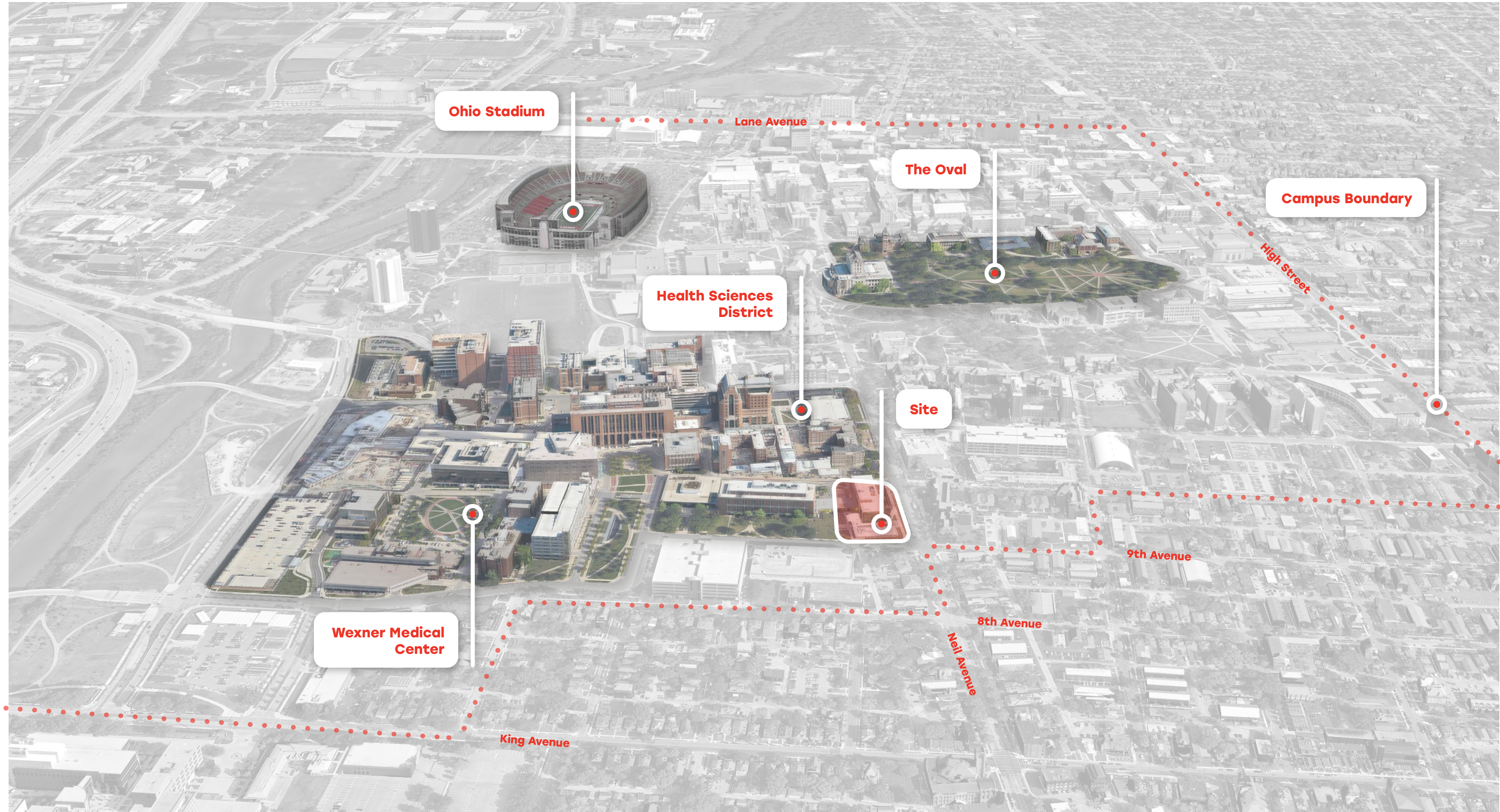
Situated prominently on a gateway corner to both The Ohio State University's academic main campus and the Wexner Medical Center, Jane E. Heminger Hall serves as an entry point to the university's health science campus. The addition and expansion of the College of Nursing's complex sets the tone for visitors arriving to campus from the south and inspires students and faculty through its innovative architecture and health-focused environment.

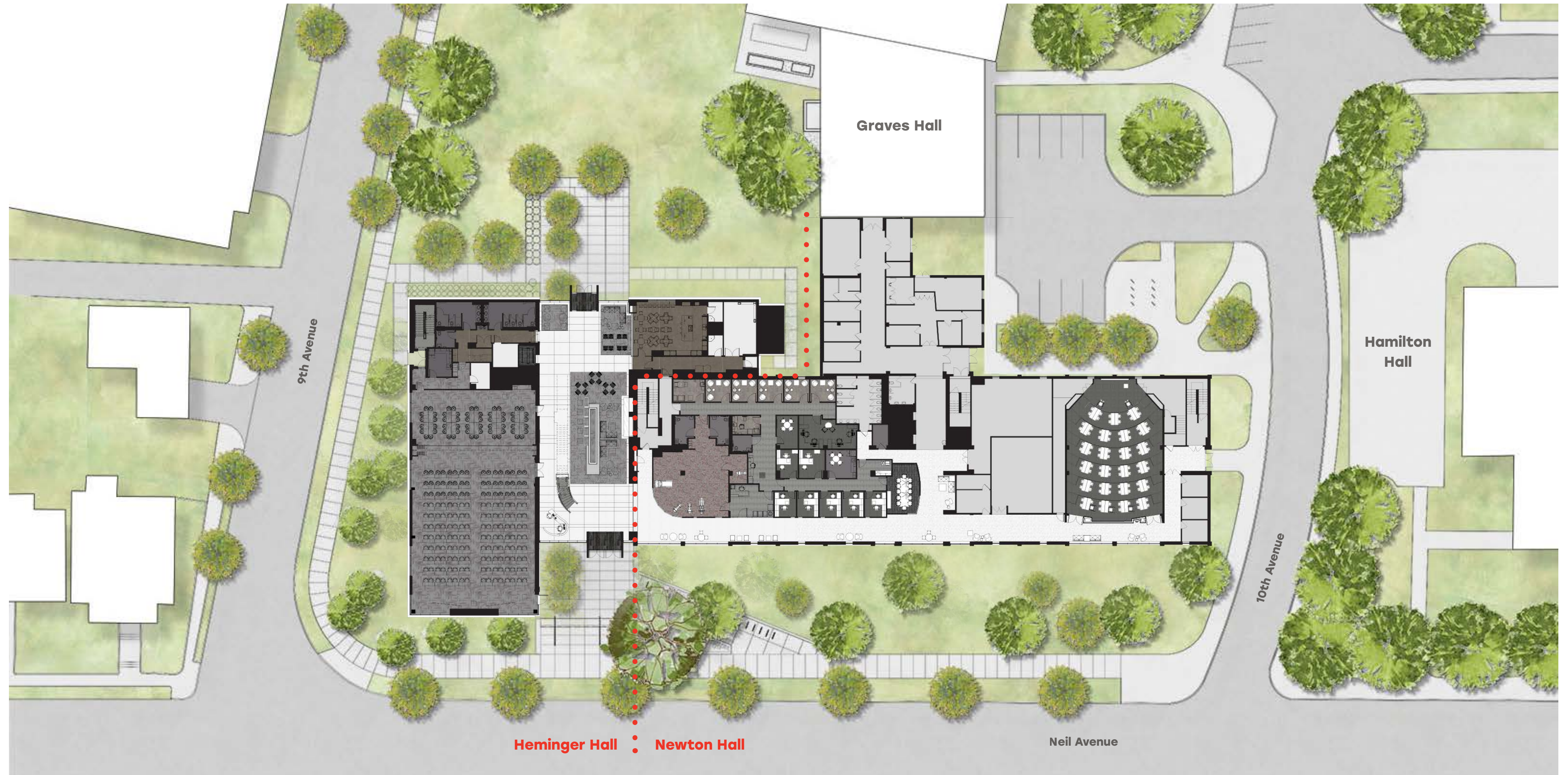
The project embodies the OSU College of Nursing's vision to be the world's leader in thinking and achieving the impossible in order to transform health and improve lives. The first building on campus to be designed to meet both LEED and WELL certification, it leverages the building design itself to advance the College's mission to lead the way towards enhancing student health and well-being, campus-wide.

To successfully execute this vision, the project team focused on design elements that provide stress reduction and support for emotional health, access to daylight, active movement and exercise opportunities, and social connections and connectedness.

Through a human-centered architectural approach, the building extends the College's mission through:

- A highly activated student commons atrium space supporting a healthy organizational culture
- Abundant access to daylight and views of nature from every space
- Collaborative meeting and conference spaces which include advanced audio-visual systems
- Integrated circulation paths intended to inspire and facilitate integrated work-day activity
- Nutrition education teaching and outreach facilities
- Flexible office clusters supporting collaborative research, teaching and clinical practice Centers of Excellence
- Classroom spaces designed to support contemporary teaching pedagogy
- Accessible and prominent student success guidance and support spaces
- Innovative clinical spaces housing the College's Institute for Optimal Health and Wellness





**SITE PLAN**  
Localized

A highly transparent corner addition, the building both engages the street and leverages the exceptional visibility of this gateway site. The project solved several technical challenges, including a complex corner site with existing utilities and easements, and setbacks that needed to relate to both the Victorian Village residential neighborhood to the south and the campus architecture to the North. By pulling the addition away from the existing Newton Hall the opportunity arose to provide a three-story atrium to connect the new structure with the existing building.

The major renovation of Newton Hall first floor was an extension of the Heminger Hall project, by the same project team.

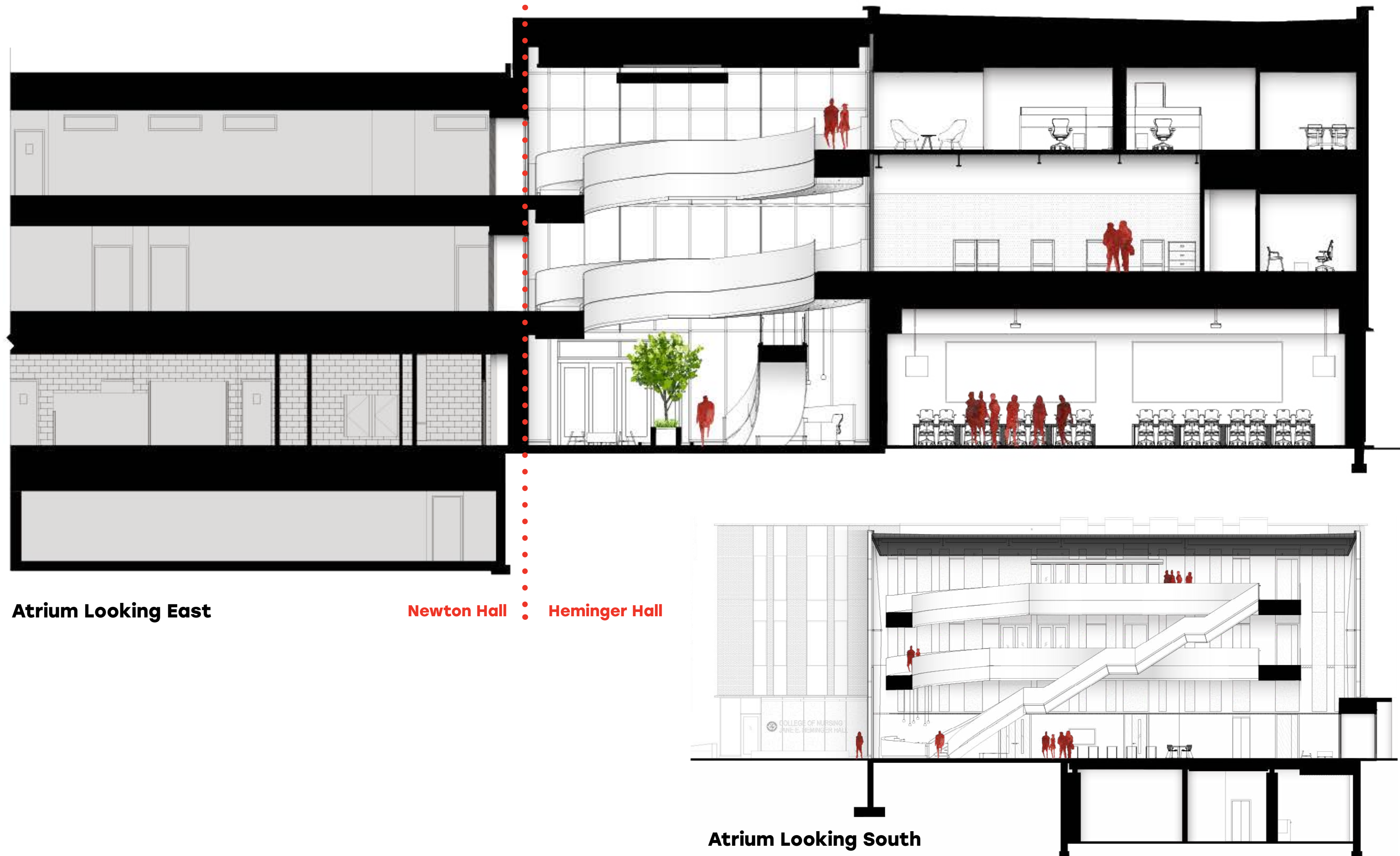


**1 GRAND ENTRANCE AND STAIR**

Visitors to the College are welcomed inside the main doors to the atrium by staff located at a new reception desk with a curving front face, whose height slowly rises from one side to the other. The front face is made of white Corian, which has a natural pattern engraved into it and backlit to enhance the design. The natural pattern of the reception desk's face resembles roots growing down into the ground. This pattern mirrors the same element in the custom laser cut guardrail above.



**FLOORPLAN**  
Level 1



**Atrium Looking East**

**Newton Hall** • **Heminger Hall**

**Atrium Looking South**

**BUILDING SECTION**

Atrium Looking East

The floor to floor heights between the existing Newton Hall building and the new Heminger Hall second and third floors differed greatly because of the high-ceilinged flex classroom space in the addition, but the College's impetus was to create connections across the atrium between buildings. The design team's solution was to provide elliptically curved ramps to connect the floors and maintain accessibility.



## **2** CONNECTING RAMPS

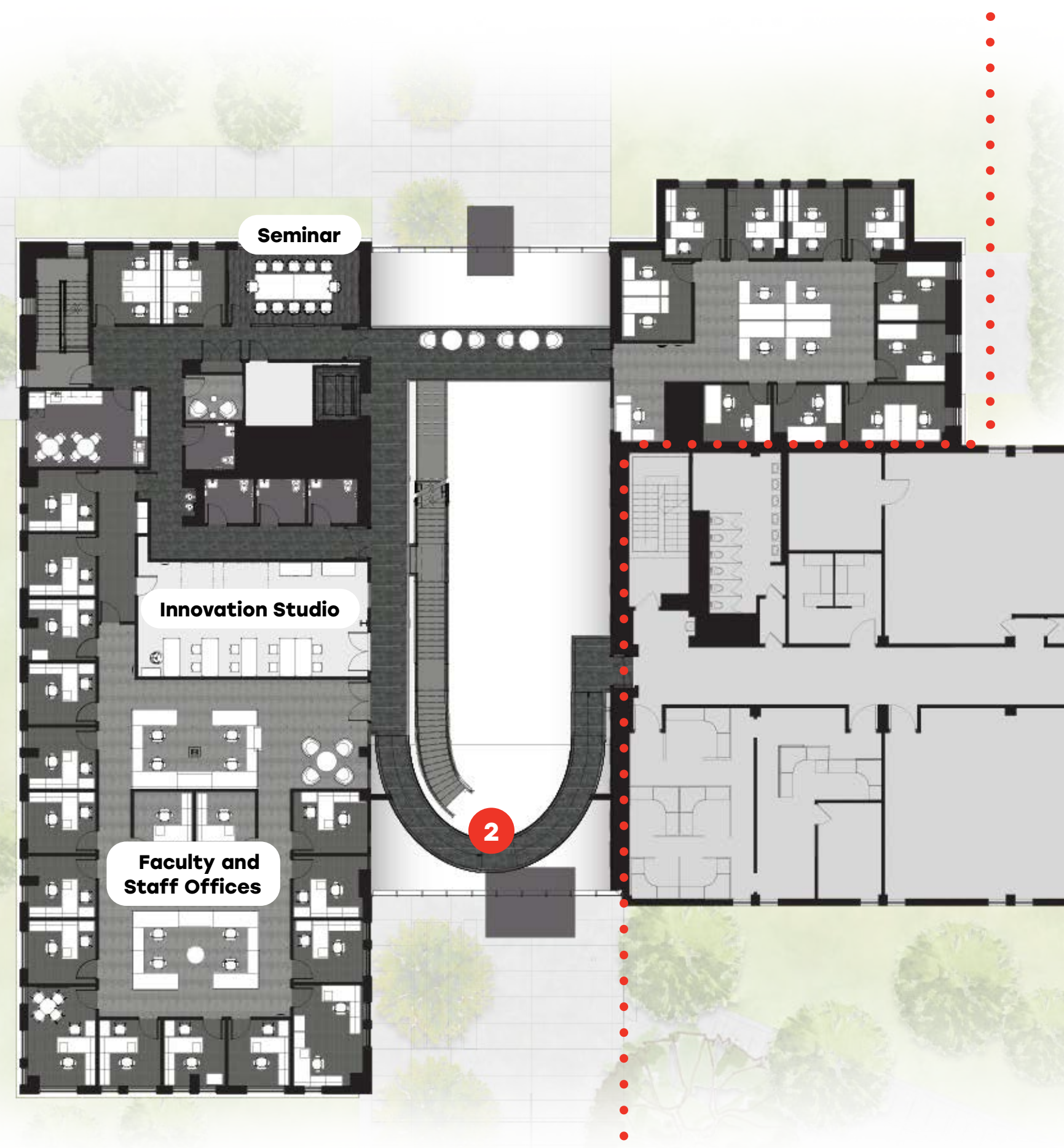
The ramps are continually brought to life by the students, faculty and visitors who occupy and transit through the space. The custom pattern was created for the metal guardrails, located on the ramps of the atrium, which resemble branches of trees reaching to the sky. The guardrail design was a custom laser cut metal panel system that evokes the openings in a tree canopy and creates a dappled effect of light and shadow on the floor of the atrium, which also contains trees, plants, natural stone, and water. Research has proven that dappled lighting can improve mental health by the positive impact of connection with nature. The design of the atrium allows the ramps to be seen outside the building.



### 3 KITCHEN

The kitchen showcases the College's commitment to nutrition, an important part of health, wellness and equity. Café tables and chairs in a bright setting invite students and staff to gather for lunch, and can also hold audiences from the community or classes for cooking demonstrations. Besides being a cozy gathering place, this demonstration kitchen has several high-tech features. An integrated audiovisual system makes this space broadcast-ready, with cameras and microphones strategically located to deliver all the angles. Custom OSU-branded wallcoverings and experiential design installations complement the architectural elements.

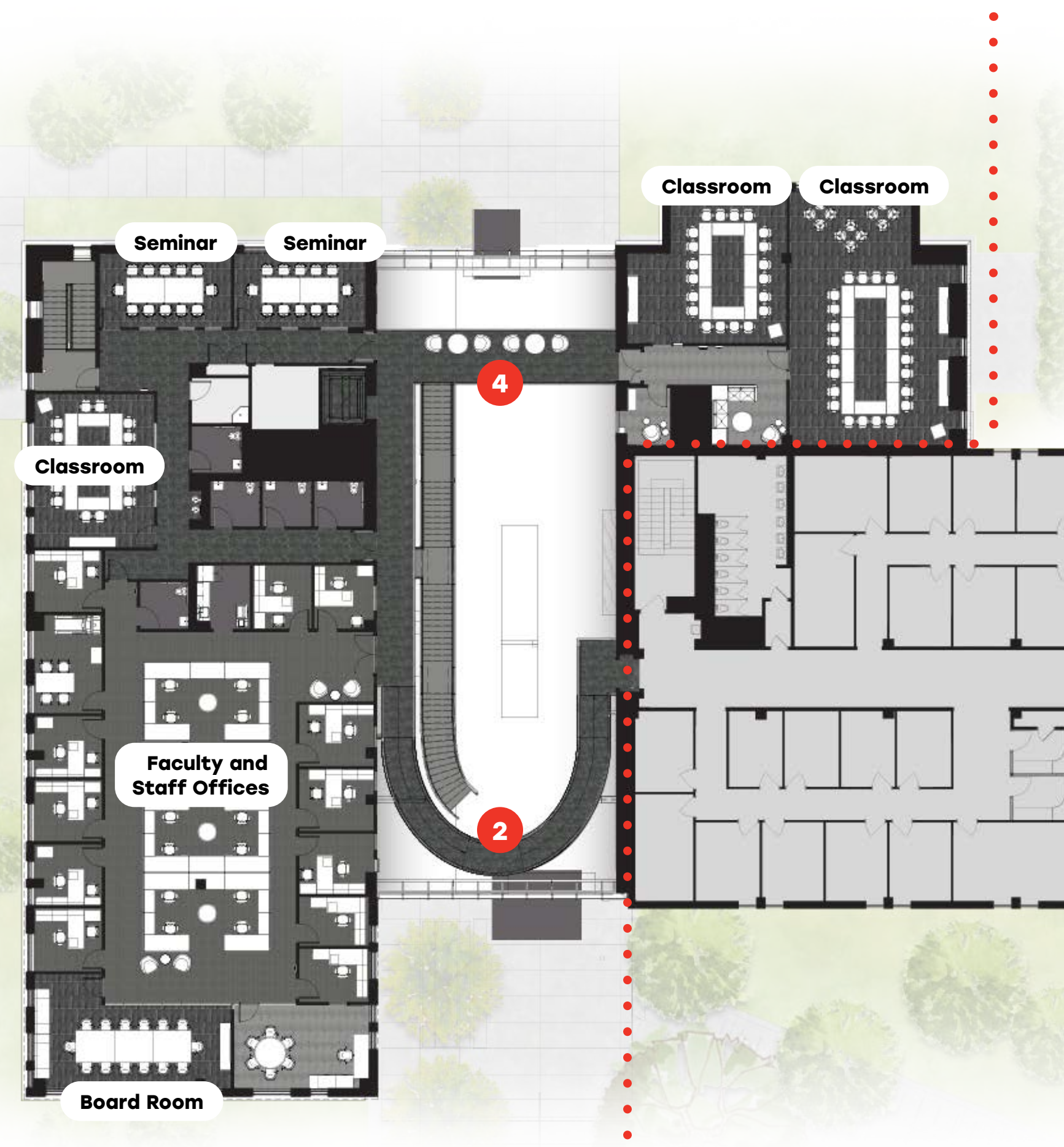




Level 2



Heminger Hall Newton Hall



Level 3

Heminger Hall Newton Hall

**FLOORPLANS**  
Level 2 - 3



**4 STUDENT COMMONS**

The soaring space of the atrium not only provides room for the winter garden and ramps, it showcases connections throughout the building. It provides stress reduction, a place where students and faculty can have choice, comfort and control over their surroundings and allows for active movement. Natural elements including live plants and trees, abundant daylight, and a water feature designed to invoke the subtle sound of a stream, have a calming effect on what is the liveliest space in the building. Radiant heating in the terrazzo floor, which is studded with buckeye leaves, custom lighting and a custom designed fireplace and hearth, add to the comfort of the users.



Heminger Hall symbolizes not only a new chapter in our college's journey, but also a promise to new generations of nurses and healthcare leaders to provide the education and tools they need to lead with vision, innovation, purpose and passion."

— **BERNADETTE MELNYK**  
Dean of the College of Nursing,  
2011 - 2023

**5 FLEX CLASSROOM**

