

BALTIMORE PEDIATRICS ARE ON THE UP AND UP

"This charming pediatric space for the youth of Baltimore has a clear path for patients and their families to reinforce and support their healthcare journeys, which are hopefully on the UP and UP!"

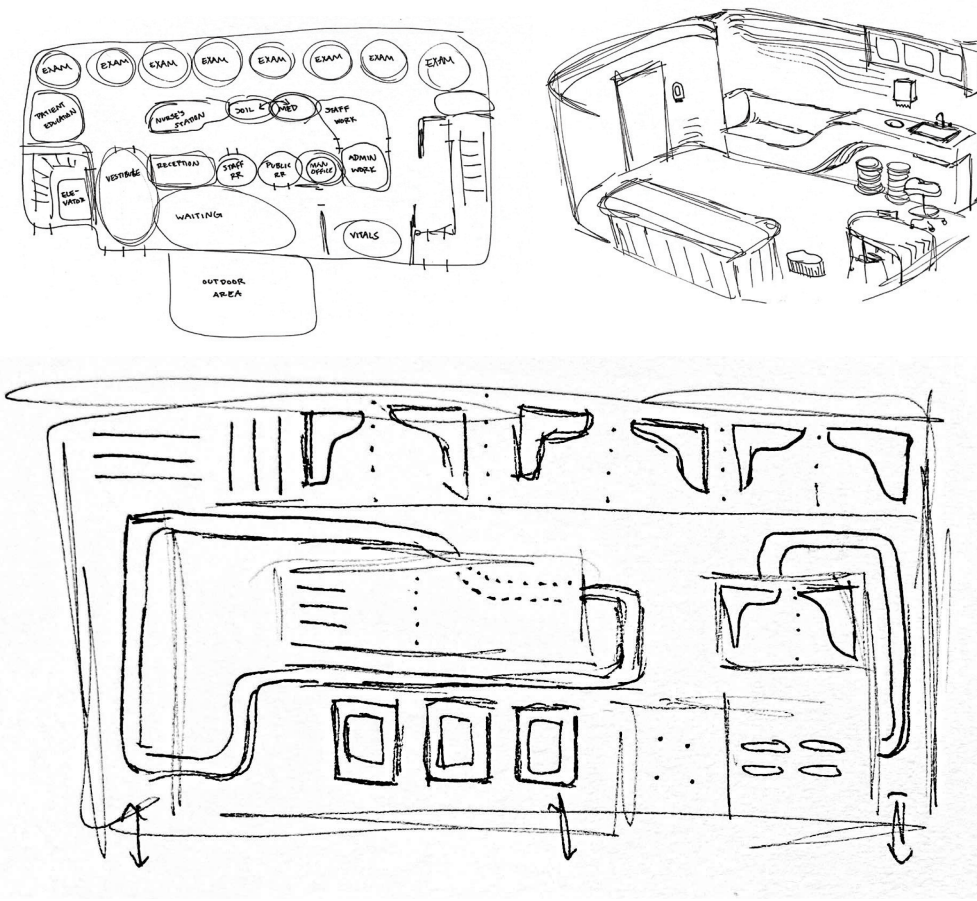
"On the Up and Up" Pediatric and Behavioral Health Center is located in Baltimore, Maryland, and is to be a great resource for children from infancy to young adulthood who do not have a pediatric center nearby. The completed clinic gives a light and airy feel, drawing you to look up at the ceiling for extra visual interest. This is incorporated throughout the design by a custom lighting element, that guides the user through the space, from the vestibule through the waiting area, and all the way around to the sign-out location. In the indoor waiting area, interaction with the ceiling is included by remote controlled color changing elements. Within the exam rooms, this idea is turned into a "cloud" feel, signifying the lower traffic rates of these rooms, floating along like clouds rather than the bustle of the hallways. Patients also have the option to see real clouds while waiting for their appointments, if they choose to wait in the outdoor area.



WAITING AREA

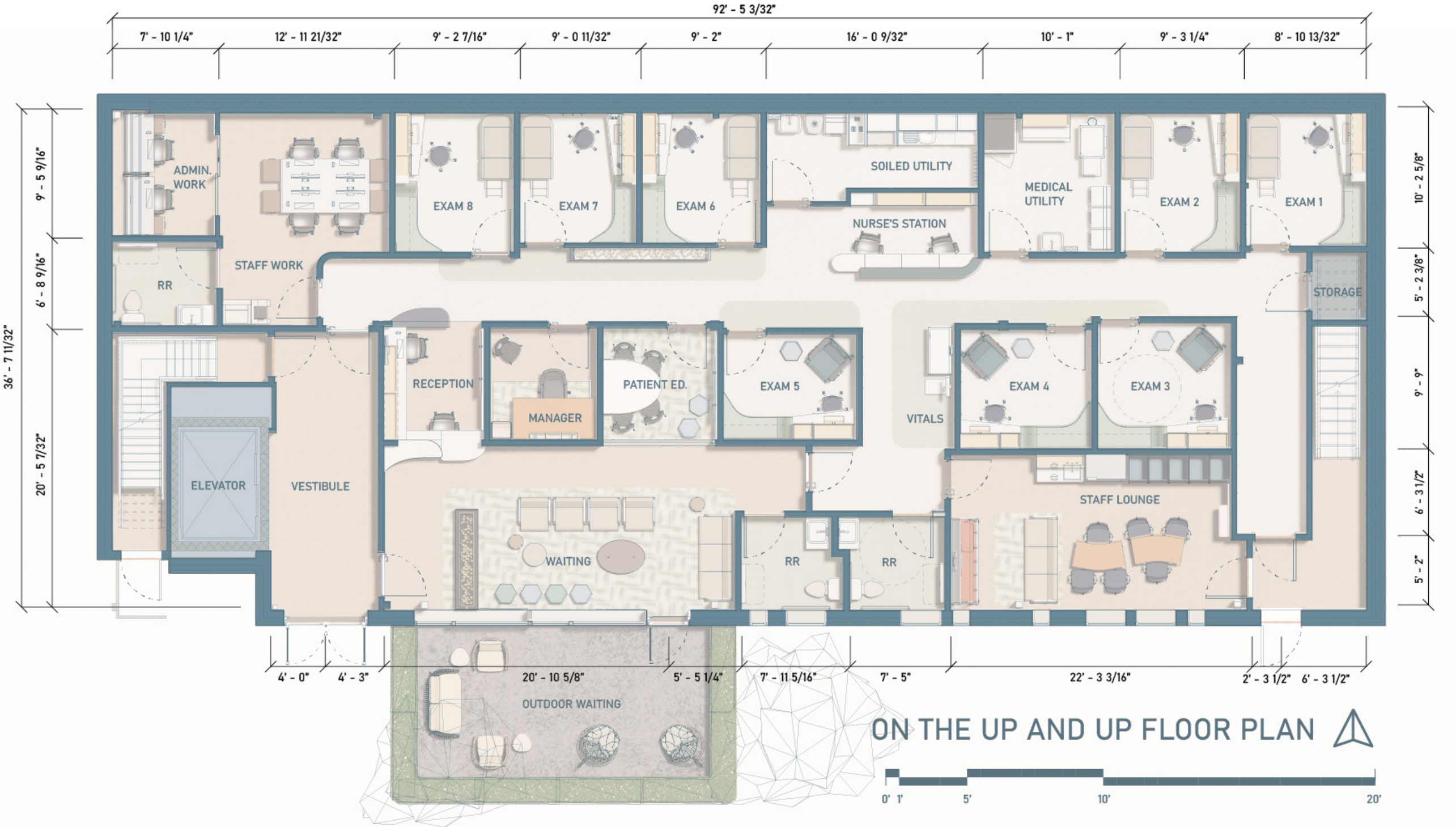
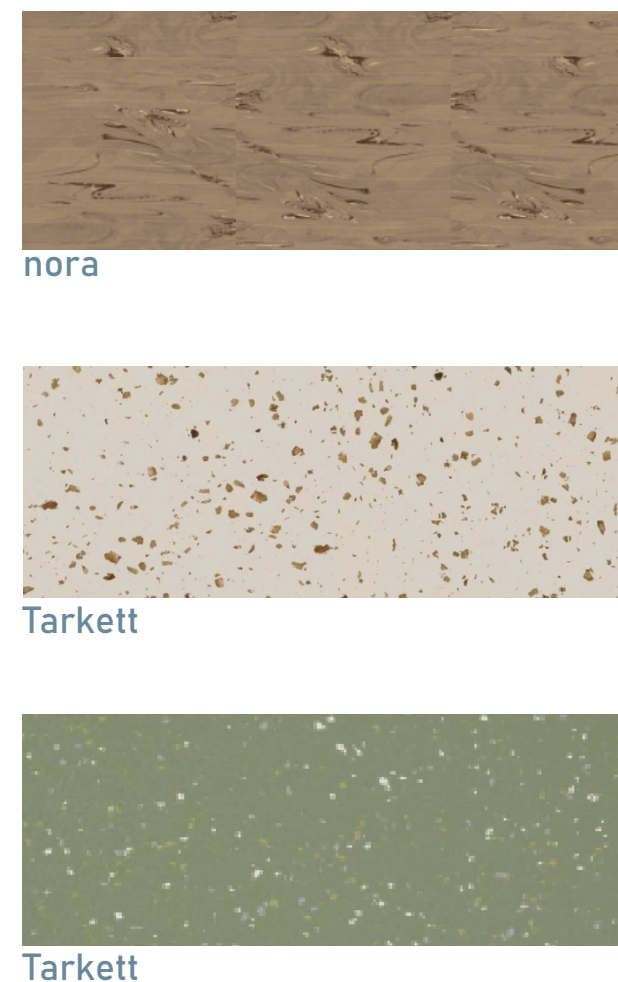
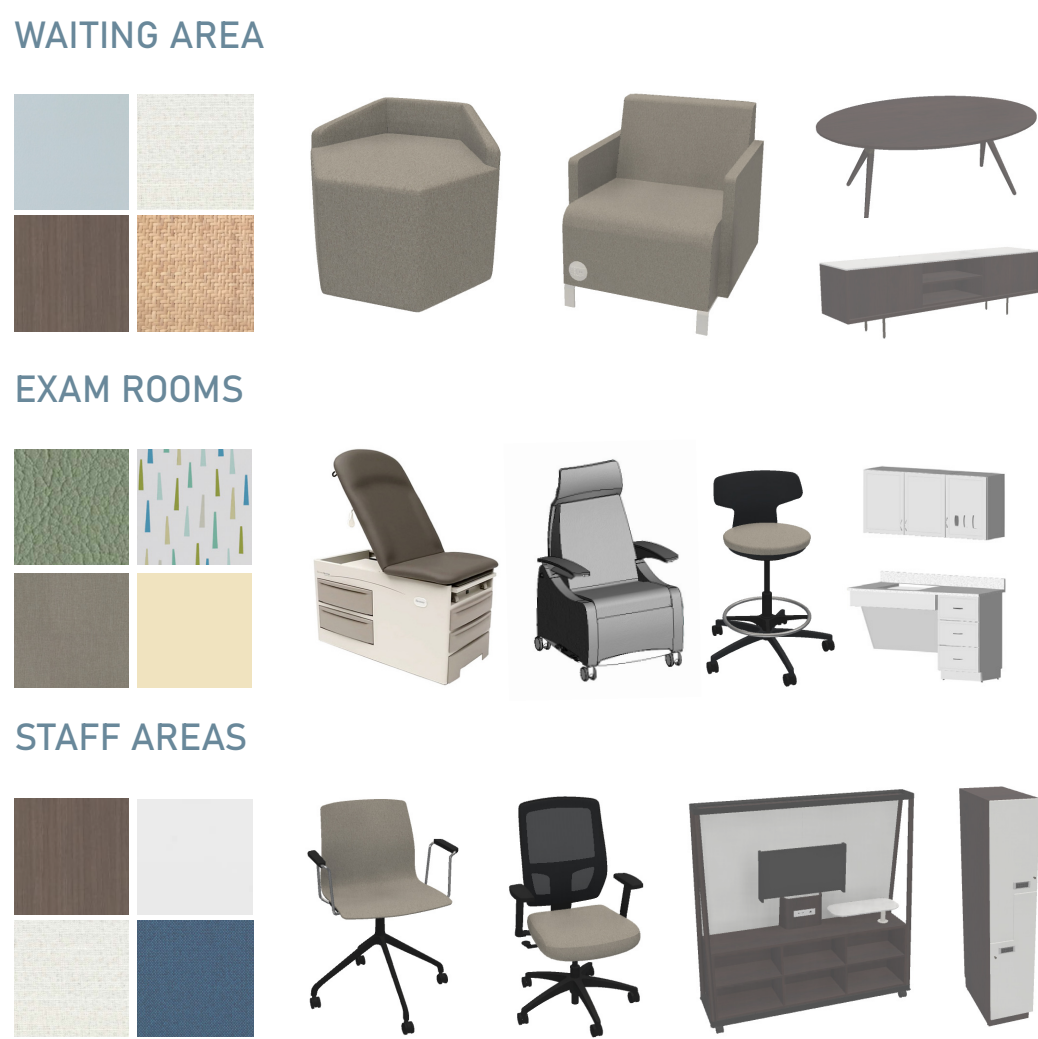
CONCEPTUAL COLLAGE

PROCESS WORK



PARTIAL FURNITURE AND FINISH SELECTION

FLOORING



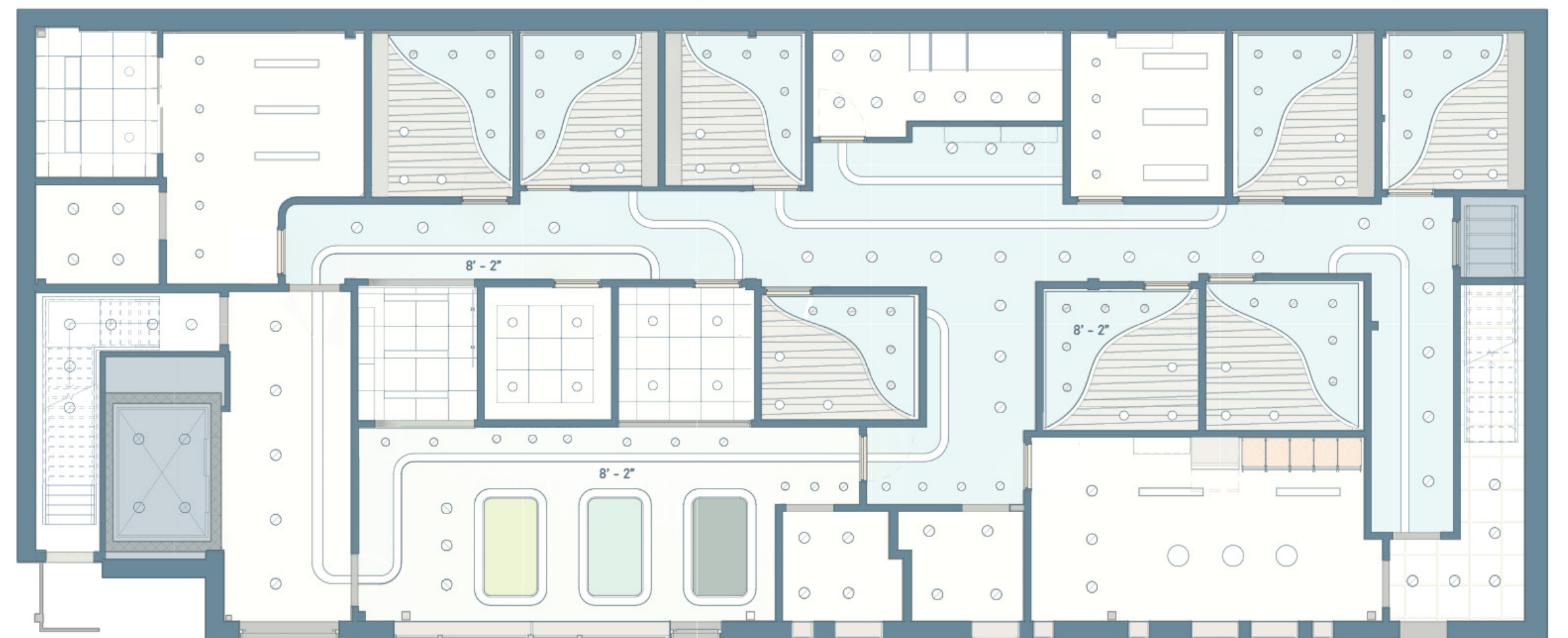
HALLWAY ELEVATION

There is a main entrance with a vestibule used by patients, and another to be used by staff, leading right into the lounge area where their personal items are stored. From the lounge, there is an exit that leads to an offshoot of the main hallway, for central access to any room they need to reach. The nurse's station, which patients see after their vitals are taken, has no door to close it off, yet still includes locks on all cabinets to keep the files private. On either side of the station are the medical and soiled utility rooms, so the staff has easy access to any supplies and instruments needed.

In all, this design strives to assist in the overall wellbeing of every patient, employee, and visitor that makes their way through this uplifting space.

CEILING LEGEND

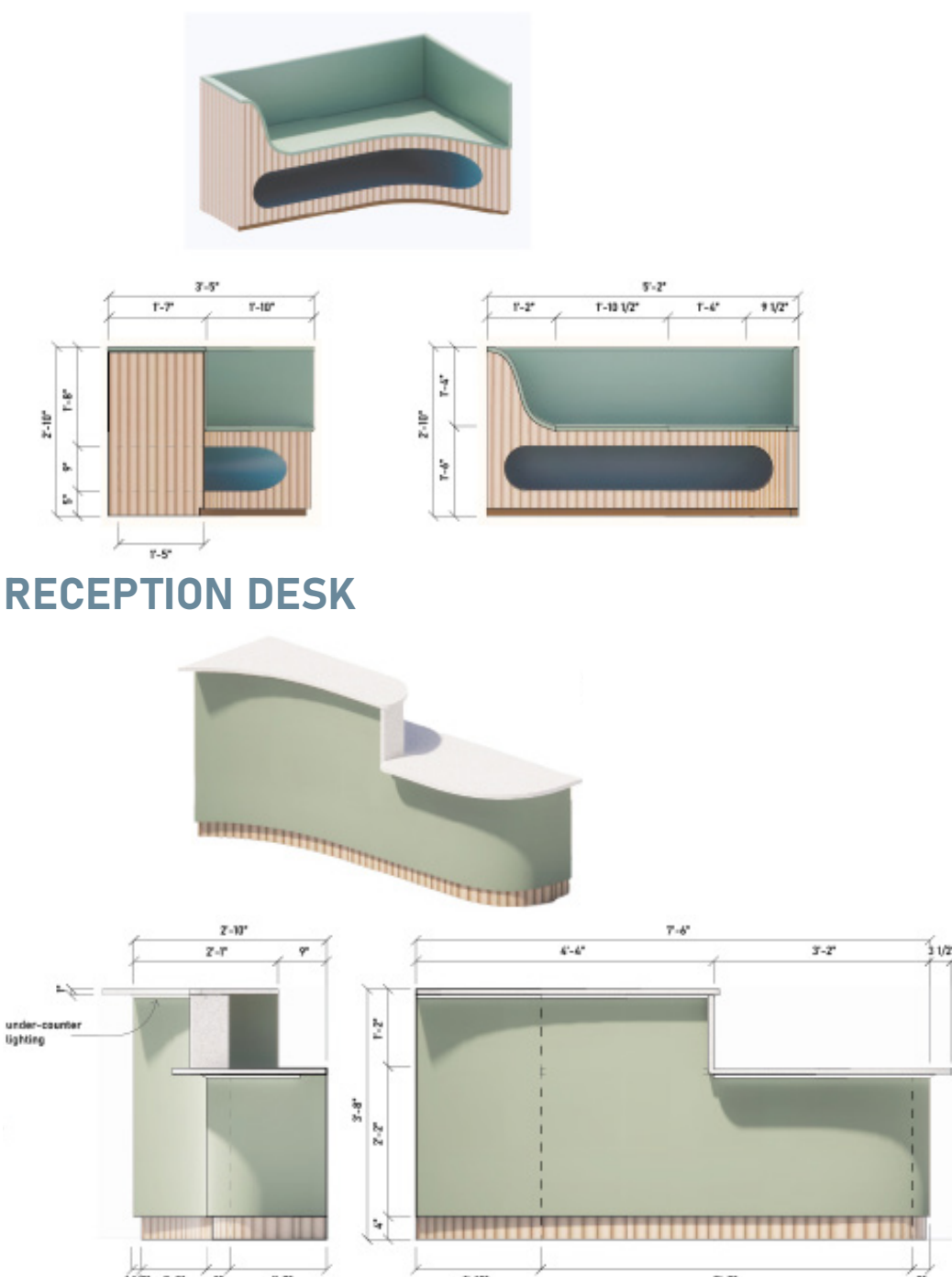
- 7" SEMI-RECESSED LIGHT
- 6" RECESSED DOWNLIGHT
- 8" RECESSED DOWNLIGHT
- ▬ 6"x4' LINEAR BOX LIGHT
- ▬ 1'x4' LINEAR BOX LIGHT
- ▬ 1'x2' LINEAR BOX LIGHT
- COLOR CHANGING ELEMENT
- ▬ CUSTOM LIGHTING ELEMENTS
- ▬ ACOUSTIC CEILING TILE
- ▬ ARKTURA ACOUSTIC TILE



ON THE UP AND UP CEILING PLAN

ALL CEILINGS 8'-6" AFF. UNO.

EXAM ROOM BENCH



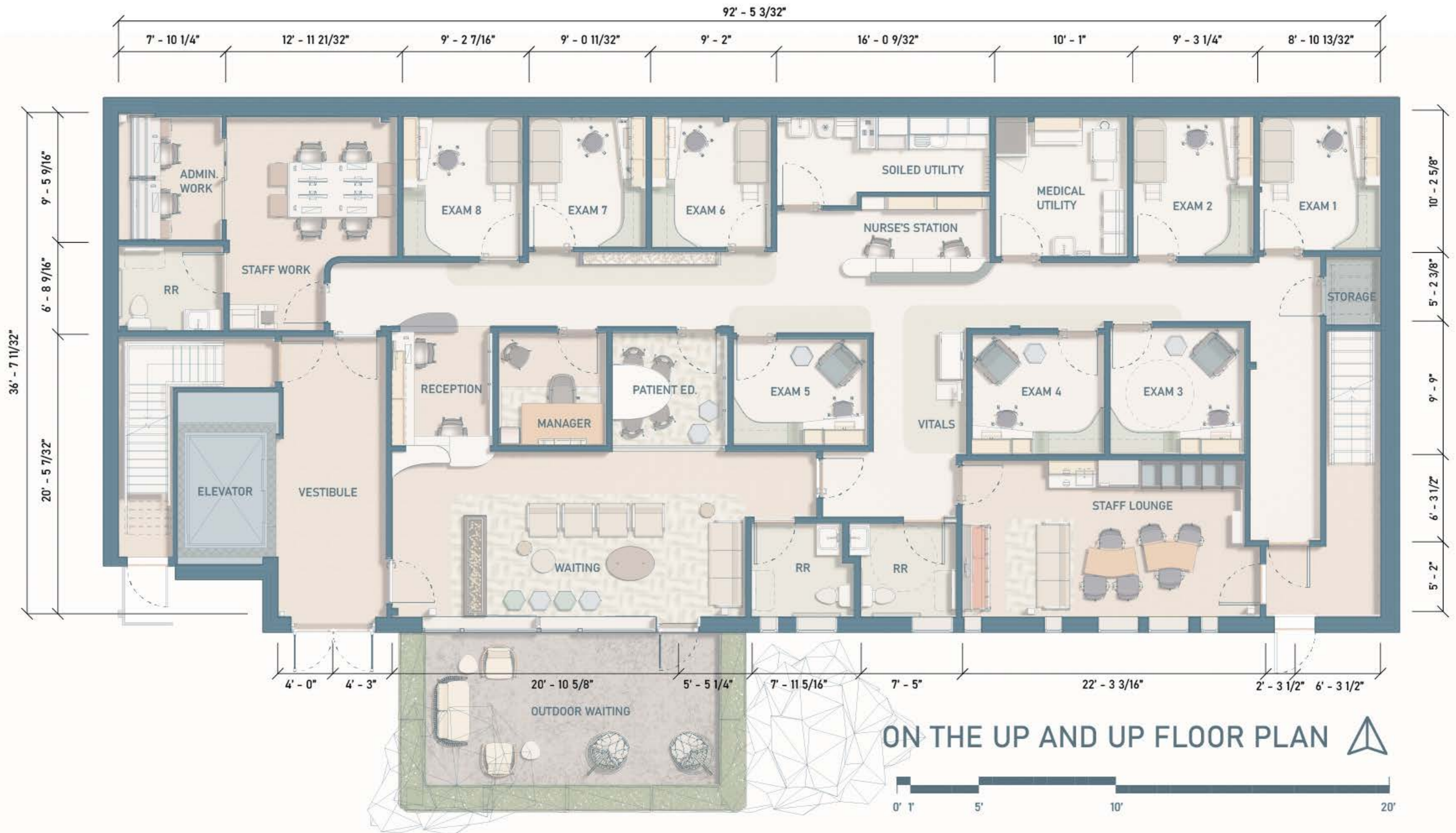
RECEPTION DESK

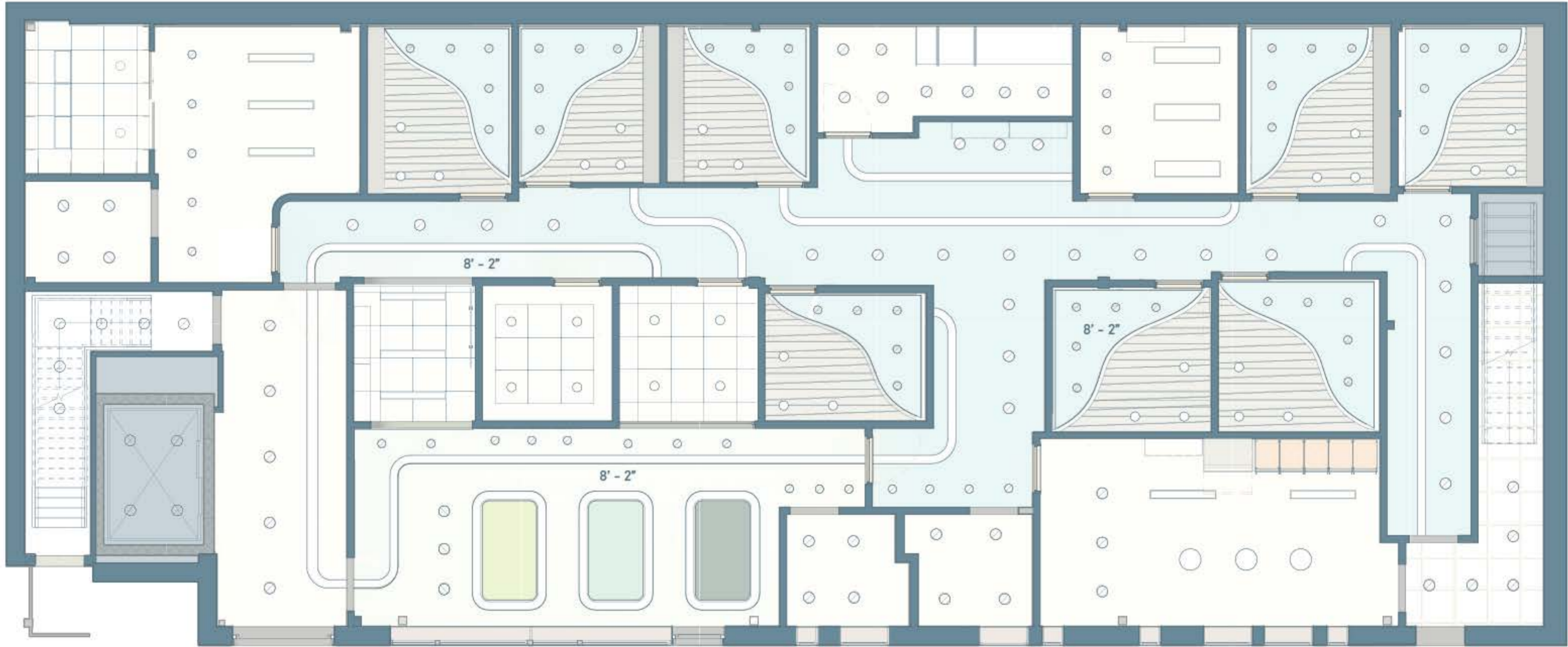


WEST FACING HALLWAY



EXAM ROOM WITH TABLE





ON THE UP AND UP CEILING PLAN



ALL CEILINGS 8'-6" AFF. UNO.





on the
UP AND UP
pediatric and behavioral
health center

8



5

6

Soiled
Utility

