

INDIAN CREEK LOCAL SCHOOLS

CROSS CREEK ELEMENTARY

Tucked away in Wintersville, Ohio, the Indian Creek Local School District undertook a campus-wide master plan that created new student-centered schools to replace their out-dated, aging facilities. Cross Creek Elementary School is one of three school buildings designed to create state-of-the-art, high-performance learning environments for their students. The elementary school's design took queues from the area's topography with the exterior concepts inspired by the shale formations endemic to the area. The interior depicts the experience a child would have moving through the different stages of the water cycle, making learning an adventure as if they were each a single drop of water, starting in the creek as a Creek Camper, and ending in rain-water runoff as a Mountain Ranger. This not only optimizes cognitive development in early childhood learning, but also supports mental health by offering children a safe environment to promote optimistic learning.

CLIENT | INDIAN CREEK LOCAL SCHOOL DISTRICT

PARTNER | OHIO FACILITY CONSTRUCTION COMMISSION (OFCC)

LOCATION | WINTERSVILLE, OHIO

PROJECT SCOPE | PREK-4 ELEMENTARY SCHOOL

PROJECT SIZE | NEW 78,000 SF

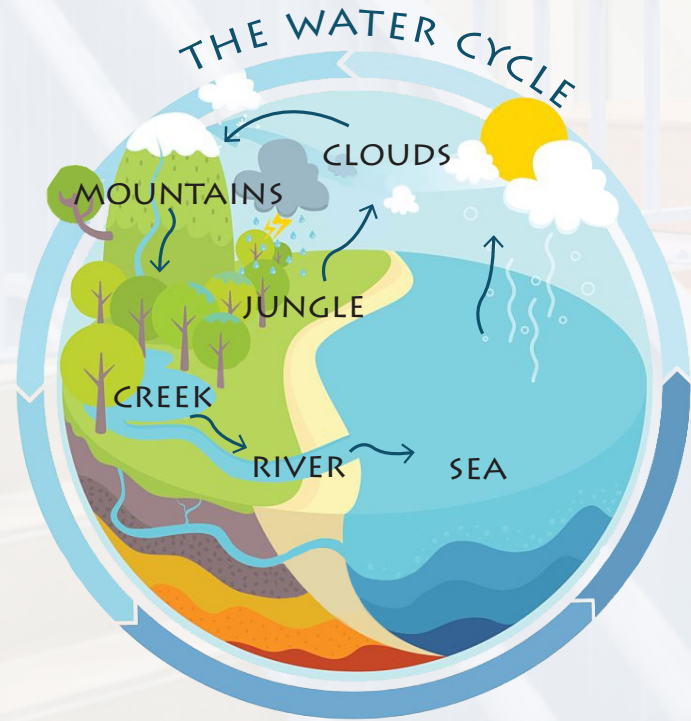
DATES | MARCH 2020 - AUGUST 2021

CERTIFICATION | LEED SILVER, PENDING



CONCEPT + WAYFINDING

Wayfinding and spacial discovery can play a major role in children's responses to their environment and serve as an essential learning tool. The concept depicts the experience a child would have moving through the different stages of the water cycle, learning how water interacts with people, animals, and the earth along the way. Vertical circulation and extended learning areas (ELAs) are used to portray how the water moves from one stage to the next, including a waterfall at the Collaboration Stair to represent runoff.





PK CREEK CAMPERS



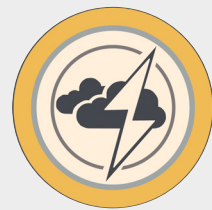
K RIVER RIDERS



1 SEA SURFERS



2 JUNGLE JAGUARS



3 CLOUD COMMANDERS

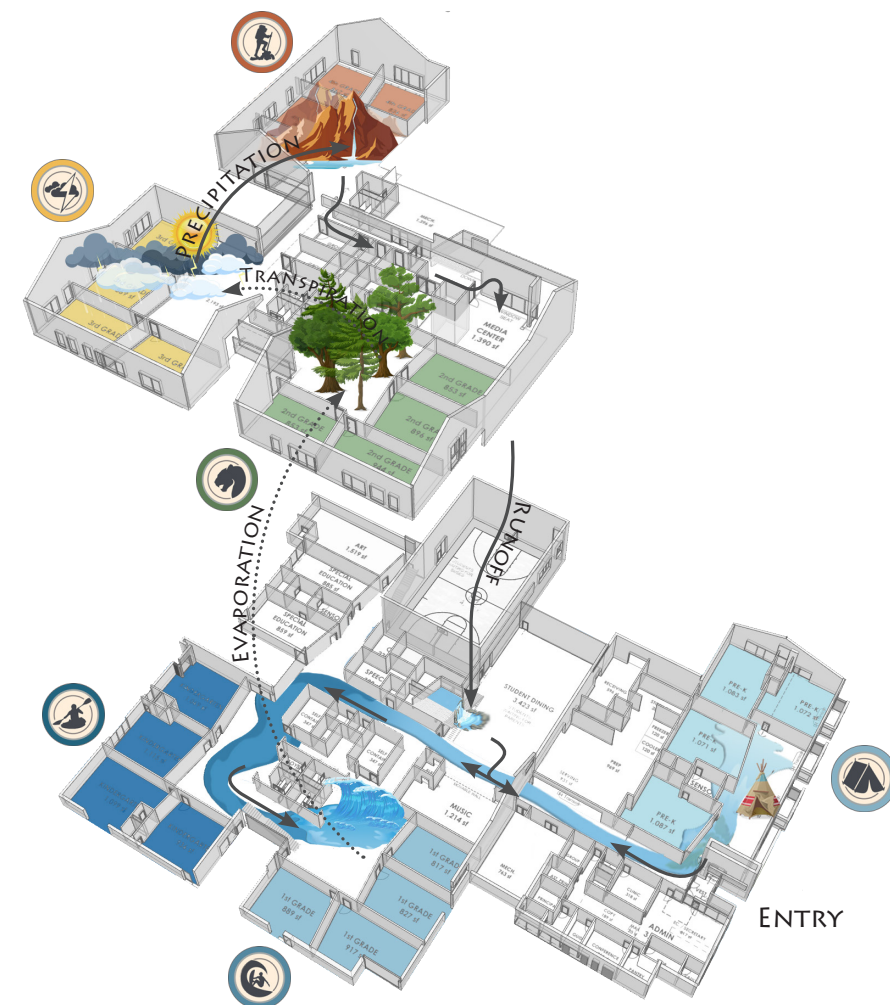


4 MOUNTAIN RANGERS

GRADE LEVEL WAYFINDING

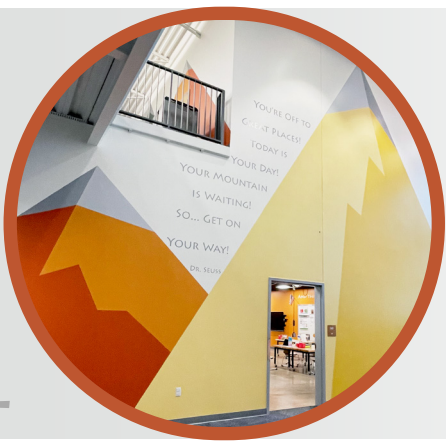
THEMING + GRAPHICS

The younger years of students' experiences in and outside of school are vital to their mental health and cognitive development. Children experience life's circumstances much differently than adults and need safe spaces, calming colors, and sensorial experiences to help give them a sense of control and order. Cross Creek Elementary captures these key design elements by introducing colors that suppress stress, biophilic forms to connect to nature, and grade level identity "badges" earned throughout each of the school years, designed specifically for them.

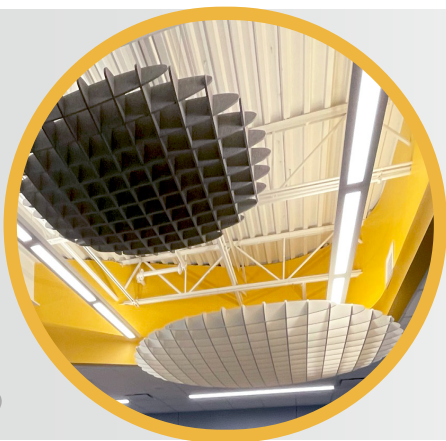


1ST GRADE ELA

BUILT ENVIRONMENT



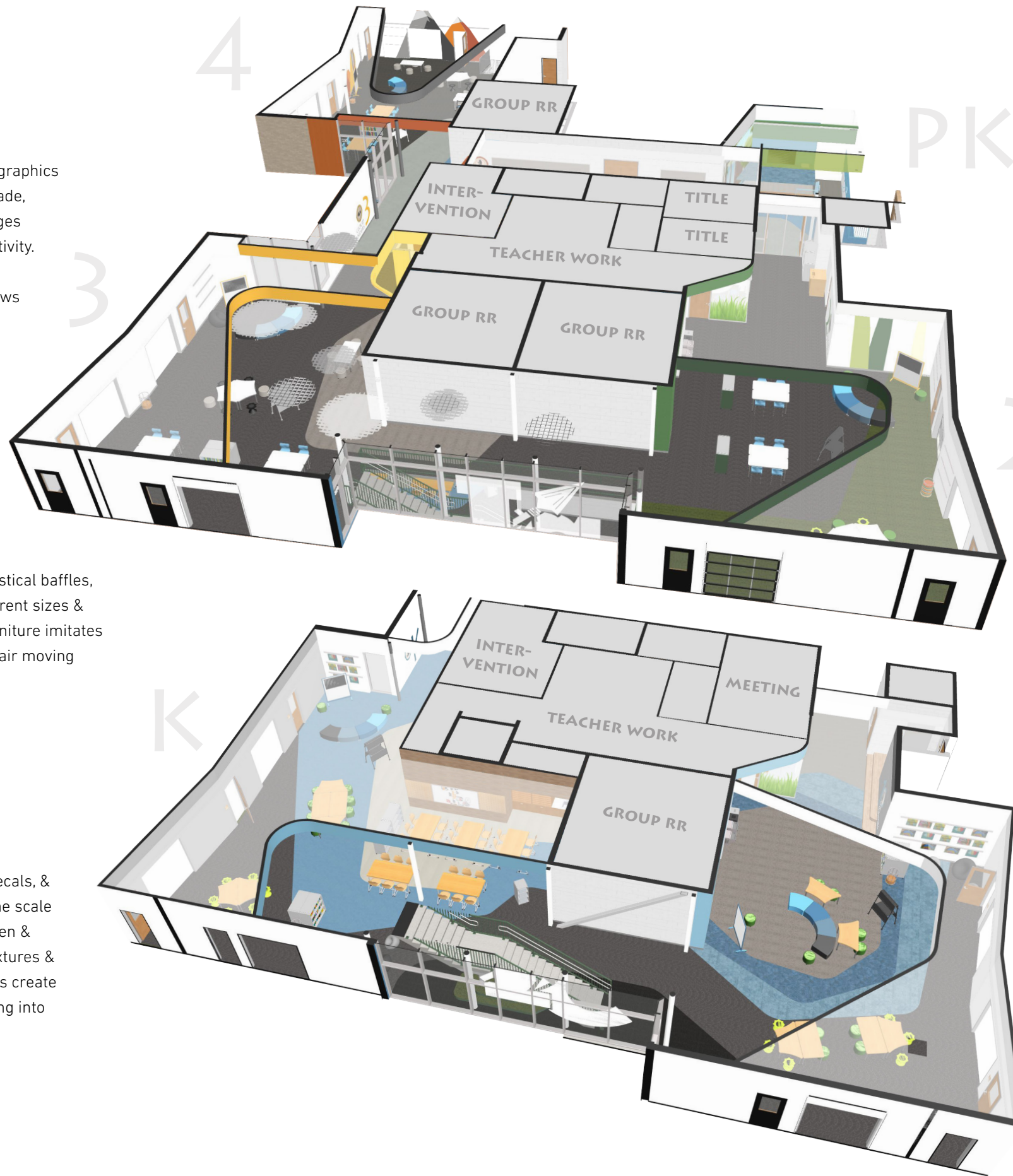
Hand-painted mountain graphics climb the walls in 4th grade, introducing vibrant oranges proven to stimulate creativity. A V-shaped soffit points upward as the space grows in height.



Swooping yellow soffits act as a sunset back backdrop for acoustical baffles, imitating clouds of different sizes & colors. Blue, mobile, furniture imitates water molecules in the air moving around.



Lower ceilings, grass decals, & wood slat walls bring the scale down for smaller children & incorporate biophilic textures & visuals. Flooring designs create the path of a river spilling into the sea.



Blue linoleum flooring spills out over the Collaboration Stair & is carried into blue Forbo carpet flooring, visually connecting to a waterfall graphic and bridging the gap to Pre-K on the other side of the building.



Custom tree graphics & rounded green soffits elude to the jungle & its tree canopy sheltering the ground and its surroundings.



Sensorial beanbags & mobile furniture resemble plants & algae found in & near the sea. Widespread soffit forms create the wall of a large interpretational wave.



"THE OVERALL THEME PAYS HOMAGE TO OUR AREA AND BRINGS THE OUTSIDE IN."

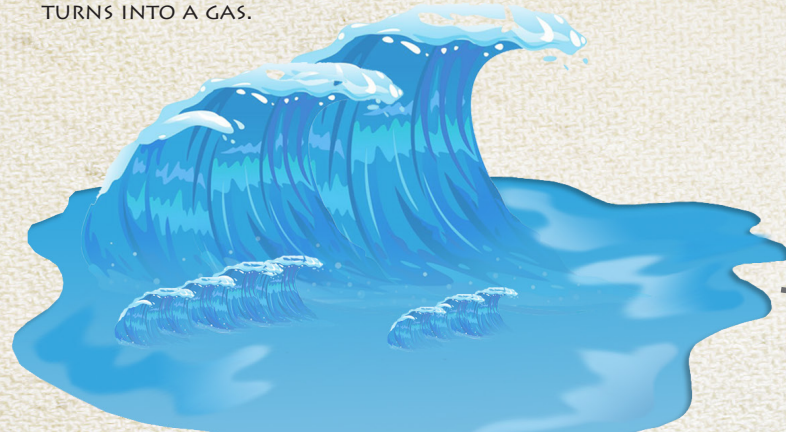
JOHN BELT, ASSISTANT SUPERINTENDENT, INDIAN CREEK LOCAL SCHOOLS

ADVENTURE MAP

AFTER THE RIVERS EMPTY INTO THE SEA, ENERGY FROM THE SUN HEATS UP THE SURFACE OF THE EARTH, CAUSING THE TEMPERATURE OF THE WATER TO RISE AND EVAPORATE SOME OF THE WATER INTO THE AIR AS IT TURNS INTO A GAS.



1



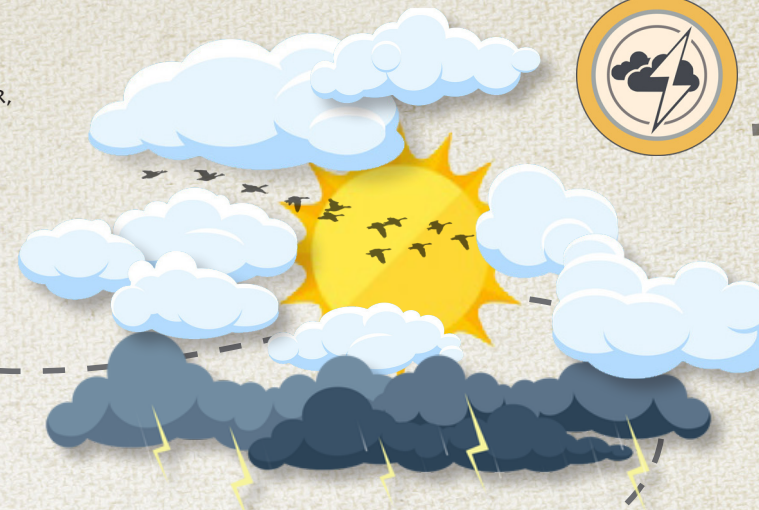
2

PLANTS AND TREES ABSORB GROUNDWATER THROUGH THEIR ROOTS AND RELEASE WATER VAPOR INTO THE AIR, CREATING CLOUDS



3

WHEN THE CLOUDS HAVE CONDENSED A LOT OF WATER, THE WATER DROPLETS BECOME TOO HEAVY FOR THE AIR TO HOLD THEM AND THEY FALL DOWN TO THE EARTH AS RAIN, SNOW, SLEET, OR HAIL.



4



SMALLER BODIES OF WATER FEED INTO LARGER BODIES OF WATER, CALLED RIVERS, WHERE ANIMALS LIKE FISH, TURTLES, AND OTTERS LIVE.



5



6

WATER FROM RAIN AND MOUNTAIN RUNOFF COLLECTS IN STREAMS AND CREEKS THAT SERVE AS HOMES TO SMALL FISH, FROGS, AND WATER BIRDS.

START
HERE



THE
WATERSHED

A WATERSHED IS THE AREA OF LAND THAT DRAINS ALL THE STREAMS AND RAINFALL TO A COMMON WATER STREAM CHANNEL.

AS THE WATER FALLS DOWN ON VEGETATION AND LAND MASSES, LIKE MOUNTAINS, IT THEN RUNS OFF AND COLLECTS INTO BODIES OF WATER OR IS SOAKED INTO THE GROUND.



RE-IMAGINING EDUCATION

Project goals from Visioning Session with community:

STUDENT - CENTERED LEARNING

Students are and should remain the center of all decisions.

TEAM COLLABORATION

Education should abandon isolated teaching practices and embrace technology.

INCLUSION / CENTER OF COMMUNITY

All students, learning styles, and families should be accommodated.

FLEXIBILITY

Each space should have multiple uses for an ever-evolving educational approach.

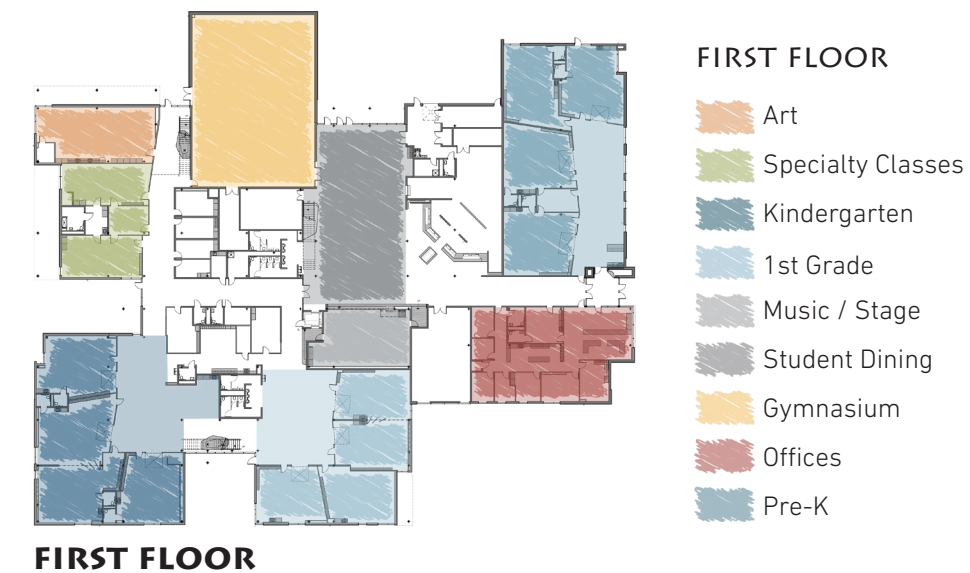
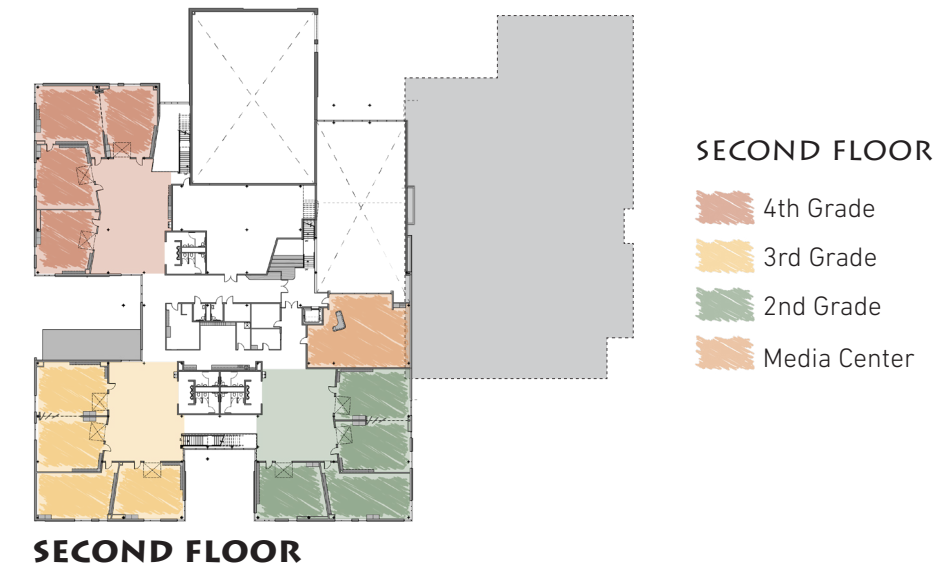


STUDENT DINING



INTERIOR ORGANIZATION

The hub of the school building is a two-story student dining space with expansive glass and access to the outdoors. Doubling as a performance space, the cafeteria's stage also functions as the music room, with a movable wall to provide separation when needed from the larger space. Above the stage sits a flexible media center, with a full wall of glass offering a unique bird's eye view of the student dining hub below and daylight beyond.



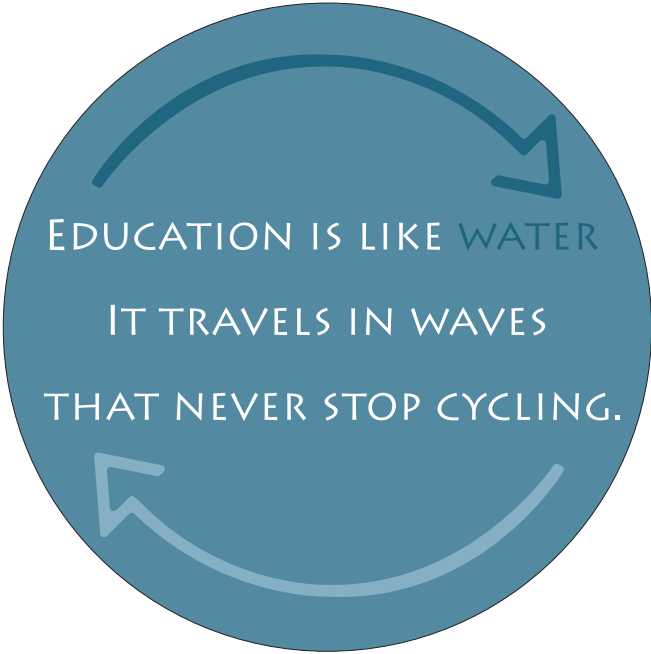


OH, THE PLACES YOU'LL GO!
DR. SEUSS

STUDENT DINING

BEYOND THE CORRIDOR

Classrooms are arranged around a large extended learning area, connected by glass garage doors, which offer additional square footage for student learning that would otherwise be under-utilized square footage in a traditional corridor approach. In addition, some classrooms have movable walls between them to facilitate team teaching while also providing the option to separate classrooms as educational activities require.



4TH GRADE ELA





TECHNOLOGY INTEGRATION

Integrated technology is a key component for learning success. Classrooms are equipped with interactive wall mounted TV monitors that allow students the opportunity to personally interact with learning materials presented on the screen. Each Extended Learning Area (ELA) is designed to house a mobile interactive TV monitor, providing teachers with alternative options for group projects and collaboration. Ceiling mounted speakers enable teachers to enhance their voice while teaching to give the best student experience.

MATERIALS + FURNITURE

From the beginning of design, durable products with easy maintenance were a priority to the district. Taking this into consideration, non-permeable flooring and bleach-cleanable upholsteries were chosen throughout the school, making it possible to provide aesthetic beauty and softer furniture options.

Warm wood tones and conceptually painted trees and mountains nod to natural elements within the built environment, which have been proven to promote cognitive development and lowered stress levels. Mobile furniture and seating variety encourage collaborative interactions among students and teachers and support posture changes throughout the day.



THE THINGS YOU CAN THINK UP

IF YOU ONLY TRY!

ART + KILN

"THINK LEFT, THINK RIGHT, THINK LOW AND THINK HIGH, OH THE THINGS YOU CAN THINK UP IF YOU ONLY TRY!."

DR. SUESS