

# FACILITATE A MODEL OF CARE CENTERED ON THE PATIENT

## Piedmont Athens Regional

Location: Athens, GA

Client/Owner: Piedmont Healthcare

As one of northeast Georgia's largest hospitals and health systems with a seventeen-county market, Piedmont Athens recognized that its current facility would not support health management, market growth, changing demographics, or a shift toward consumer-driven healthcare. Having fulfilled a vital need for local communities for more than 100 years, the aging campus was not supporting the quality of care provided.

Piedmont Athens identified the need for a radical, multi-phase transformation of the facility to improve the experience of patients, family members, providers, caregivers, and all people who enter the campus.

Tucked into a residential setting on the edge of the University of Georgia campus, the surrounding area is lush with gardens and greenspace, providing inspiration for design elements incorporated into the new tower. Through this transformative process, Piedmont Athens has revitalized its facility, offering enhanced care, a connection to nature, and a user-friendly environment.





# TOWNLEY FAMILY LOBBY



The lobby greets people with soaring wood ceilings, views directly into the courtyard, and a large digital display of nature inspired imagery. Being able to see and engage with this quiet garden, open to the sky, sets a tone of hope and healing for patients, families, and caregivers.





## PARTI - PEBBLE

A simple photo of three pebbles taken at a coffee shop in Boston, Massachusetts sparked the idea for the design concept of Piedmont Athens Regional. Harkening to the local creeks in the woods and the rugged stone quarries throughout Georgia, the pebble found it's way into every aspect of the project. The soft, curved mounding of the landscape flowed its way around the river of sparkling terrazzo where pebbles in the creek formed the first floor amenities.

Subtle imagery throughout of trees and forest plantings were complemented by the earthy interior palette of soft tones and rich greens. Buildings were pulled apart to create greenspaces that can be utilized for community gatherings, company meetings, and respite for the hospital guests and caretakers. The natural themes and elements incorporated into the design create the feeling of a hospital within a garden.

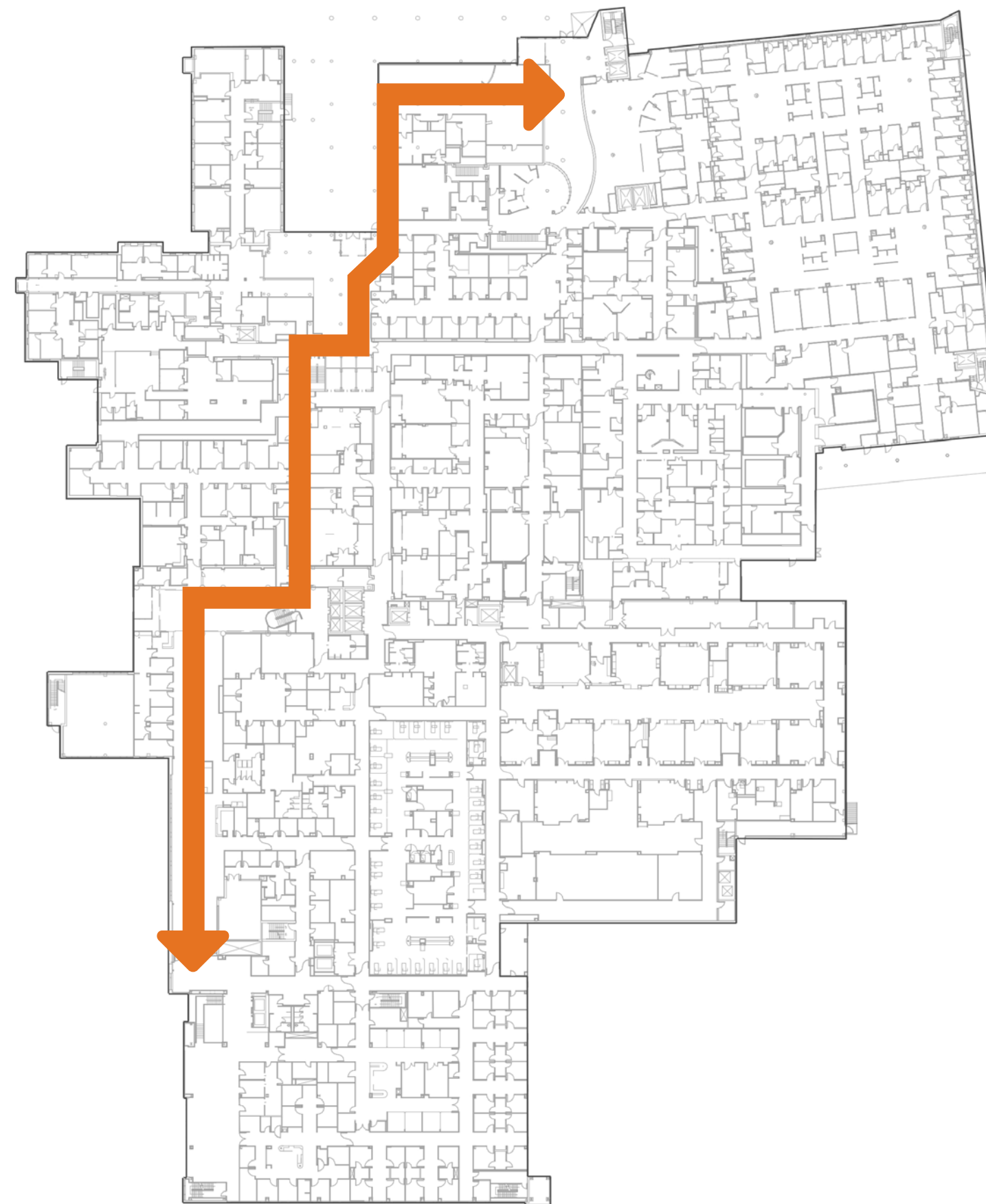
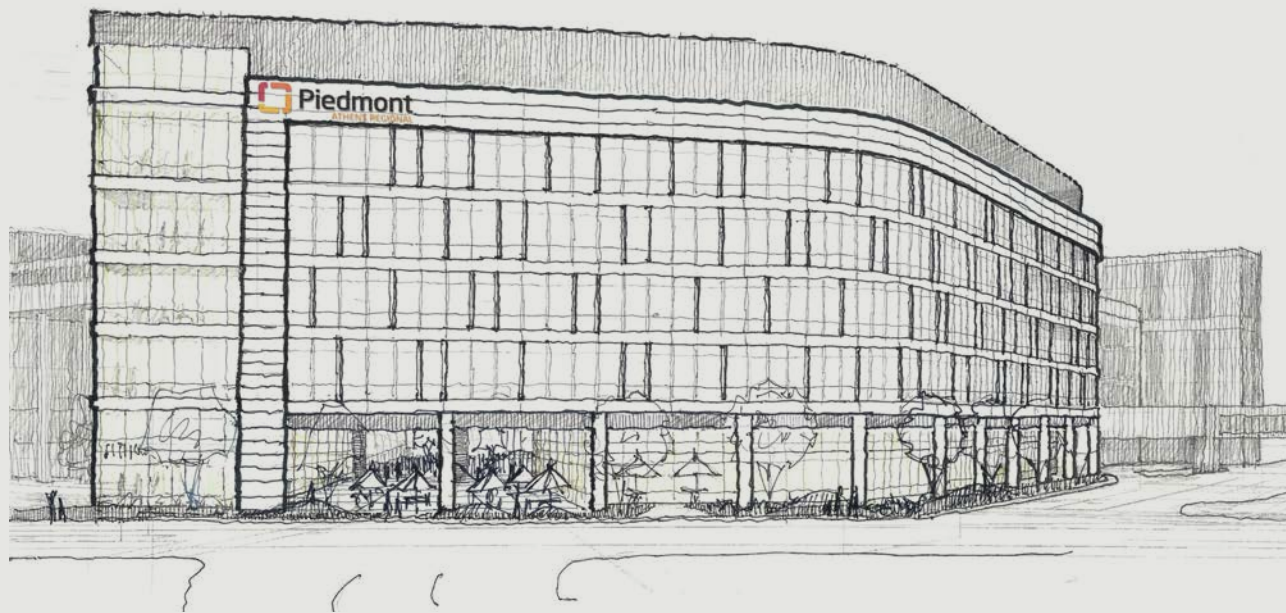




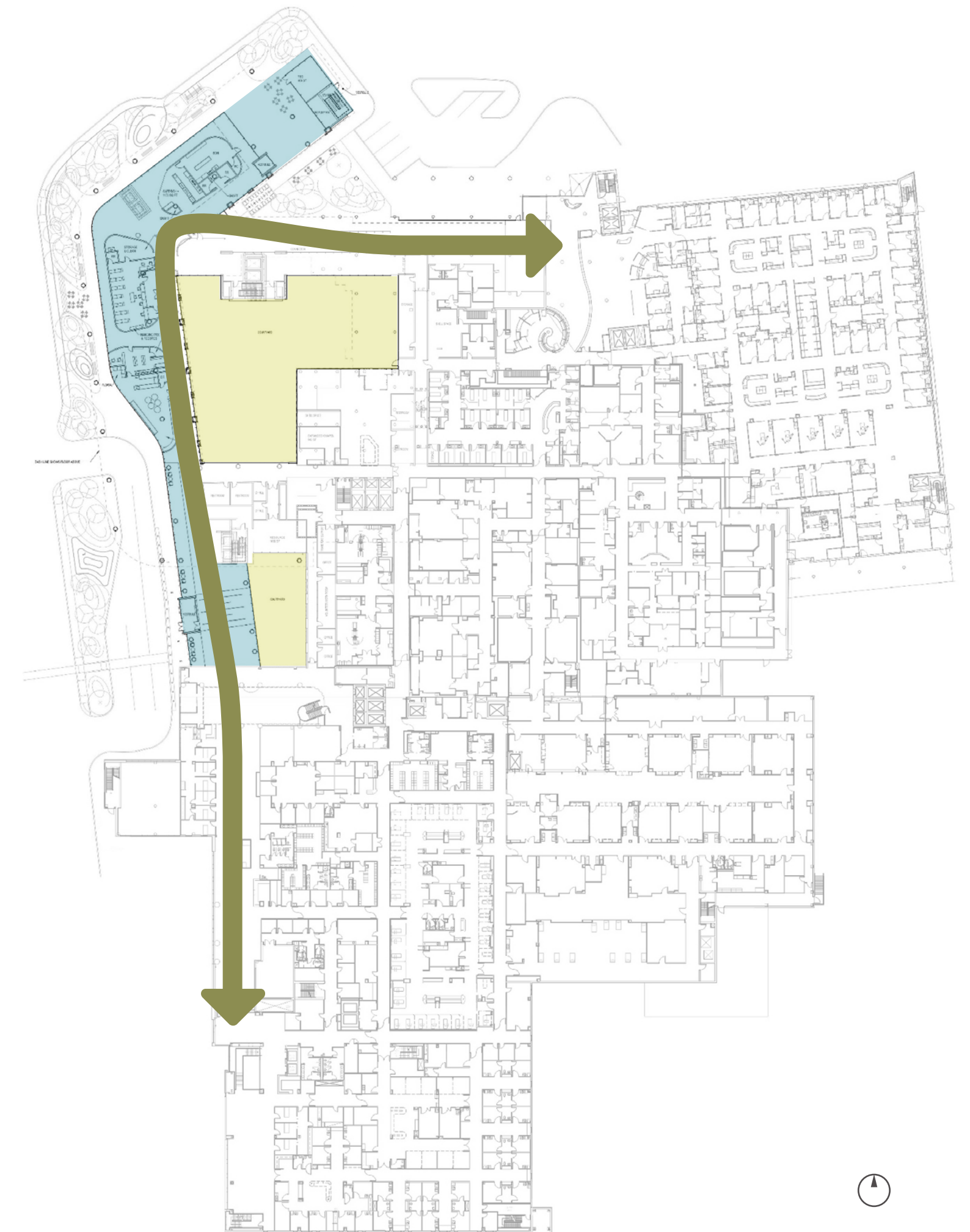
## PLANNING / WAYFINDING

A key decision in the overall planning of the design of the project was to improve the campus wayfinding strategy. Throughout the existing facility, several decision points are scattered and can be rather confusing when staff is not present. By pulling the building to the edge of the site and simplifying the path of travel, wayfinding is clearer and navigation is easier for visitors and staff alike.

The left diagram represents the previous tower's circuitous route from unit to unit. The right diagram represents the simplified path of travel with the new design. An additional benefit, the introduction of two interior courtyards, bring light and views to the interior of the campus.



BEFORE

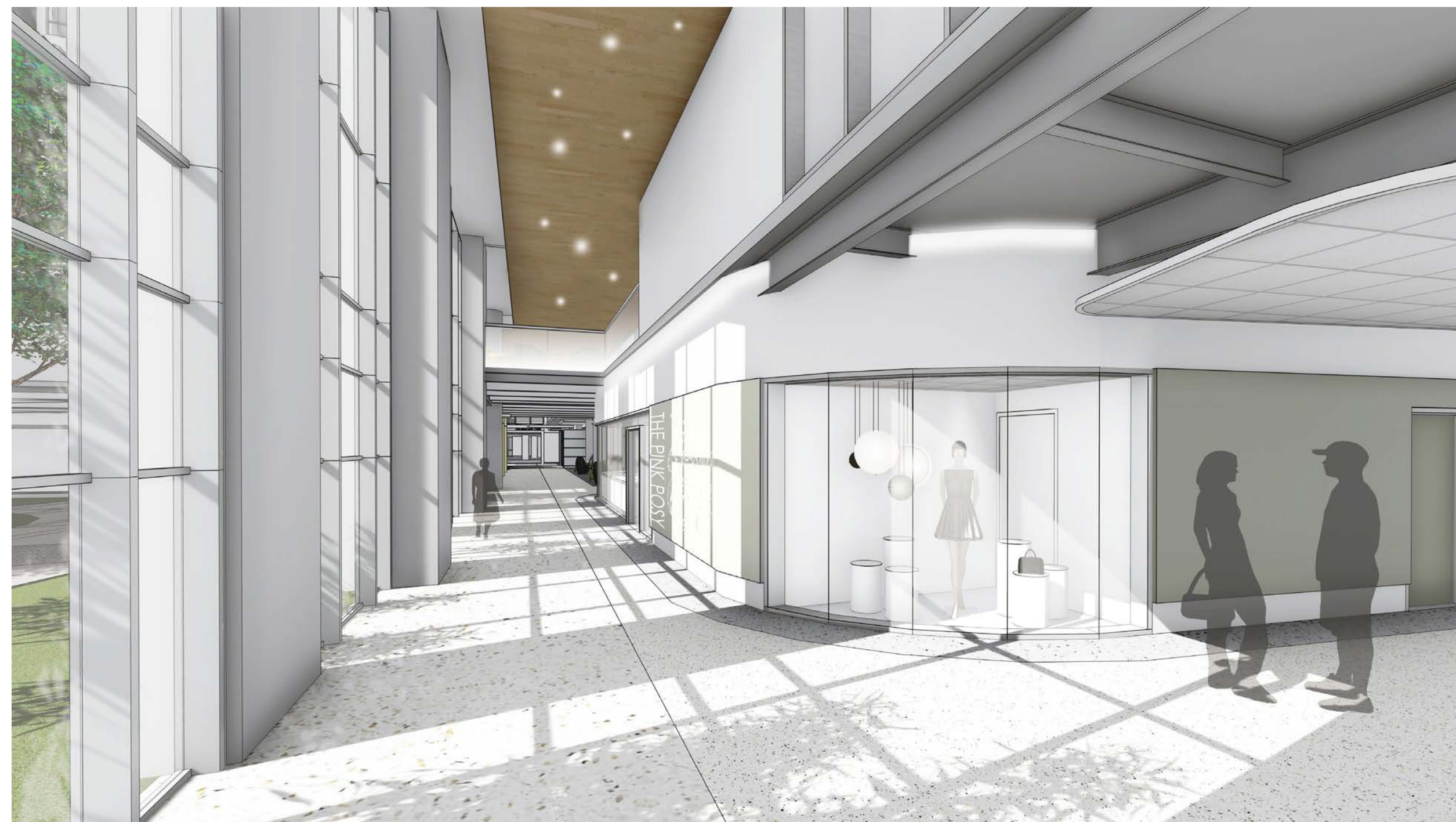


AFTER





With the streamlined design of the concourse, circulation throughout the facility is clearly defined. As a wayfinding element, the wood ceiling from the lobby continues onward to guide visitors along this journey.

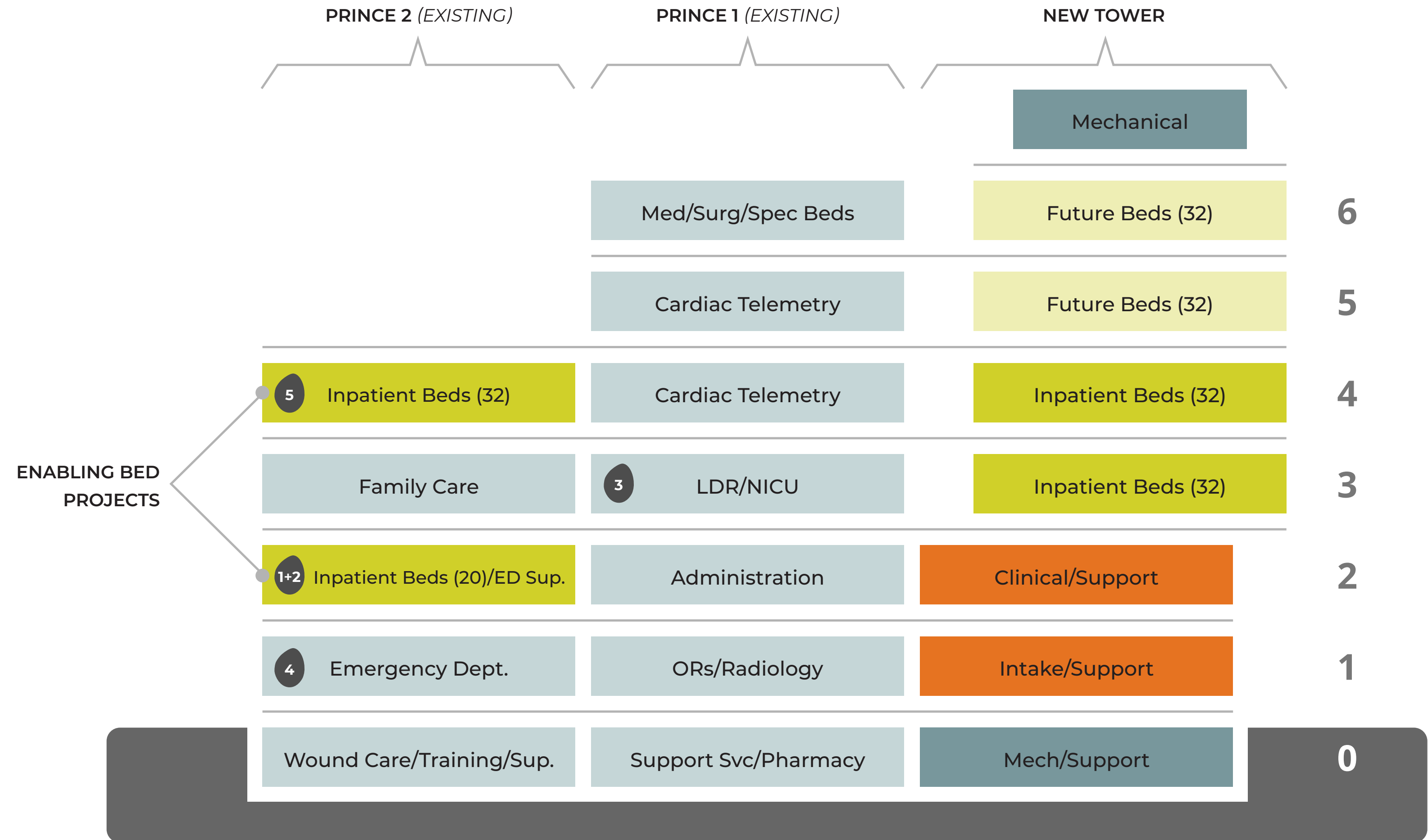




# PROGRAMMING & PHASING

Several rounds of programming, masterplanning, and analysis were conducted to determine the needs of Piedmont Athens Regional. This diagram represents the comprehensive programs of the existing facility and the new addition's program components.

Over 30 separate "Enabling" projects were completed to allow for the existing tower to be demolished and the new tower to be constructed. This included turning lobbies into breakrooms, adding a floor to an existing building, finding new places for offices in waiting areas, and renovations throughout to accommodate patient care during the construction.



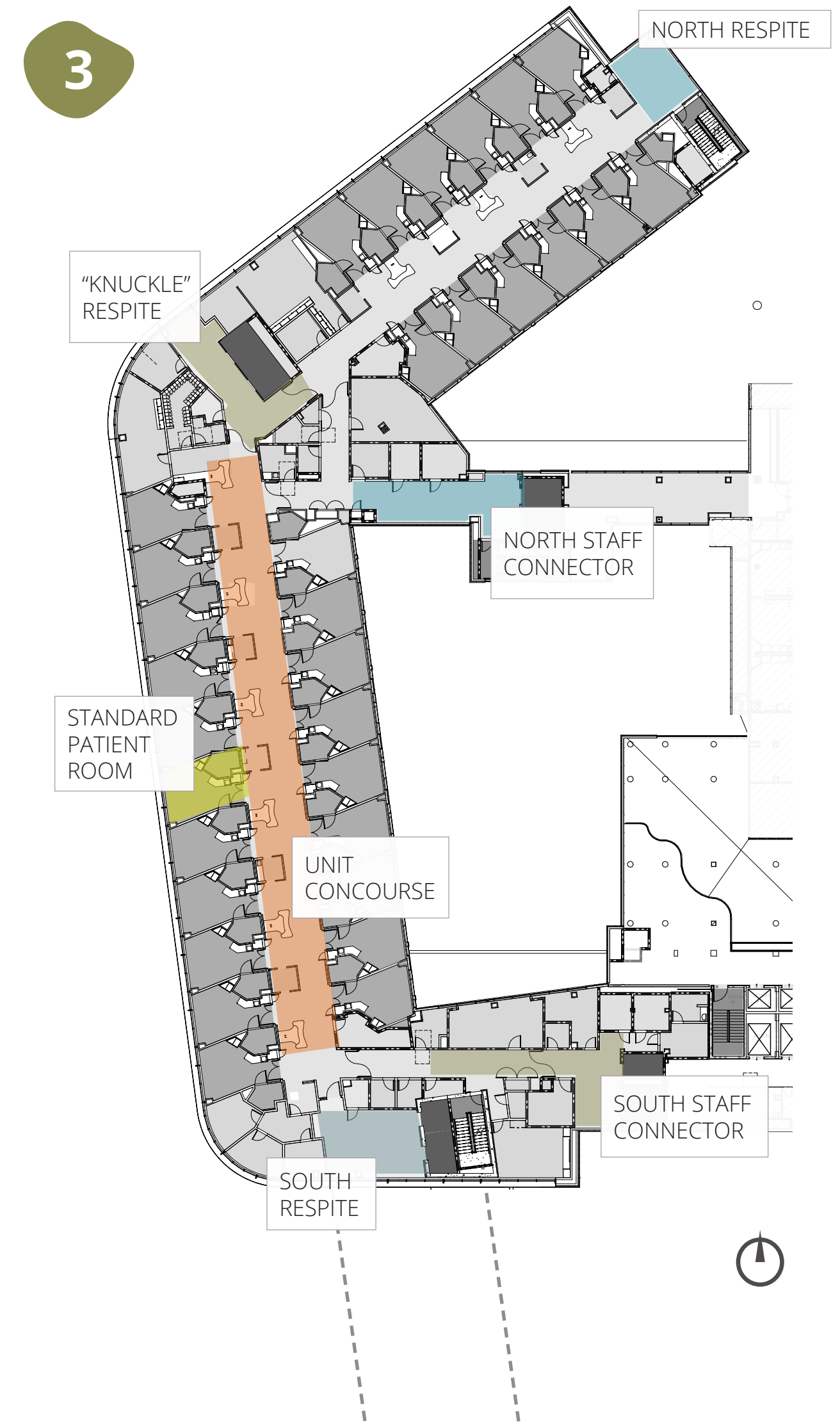
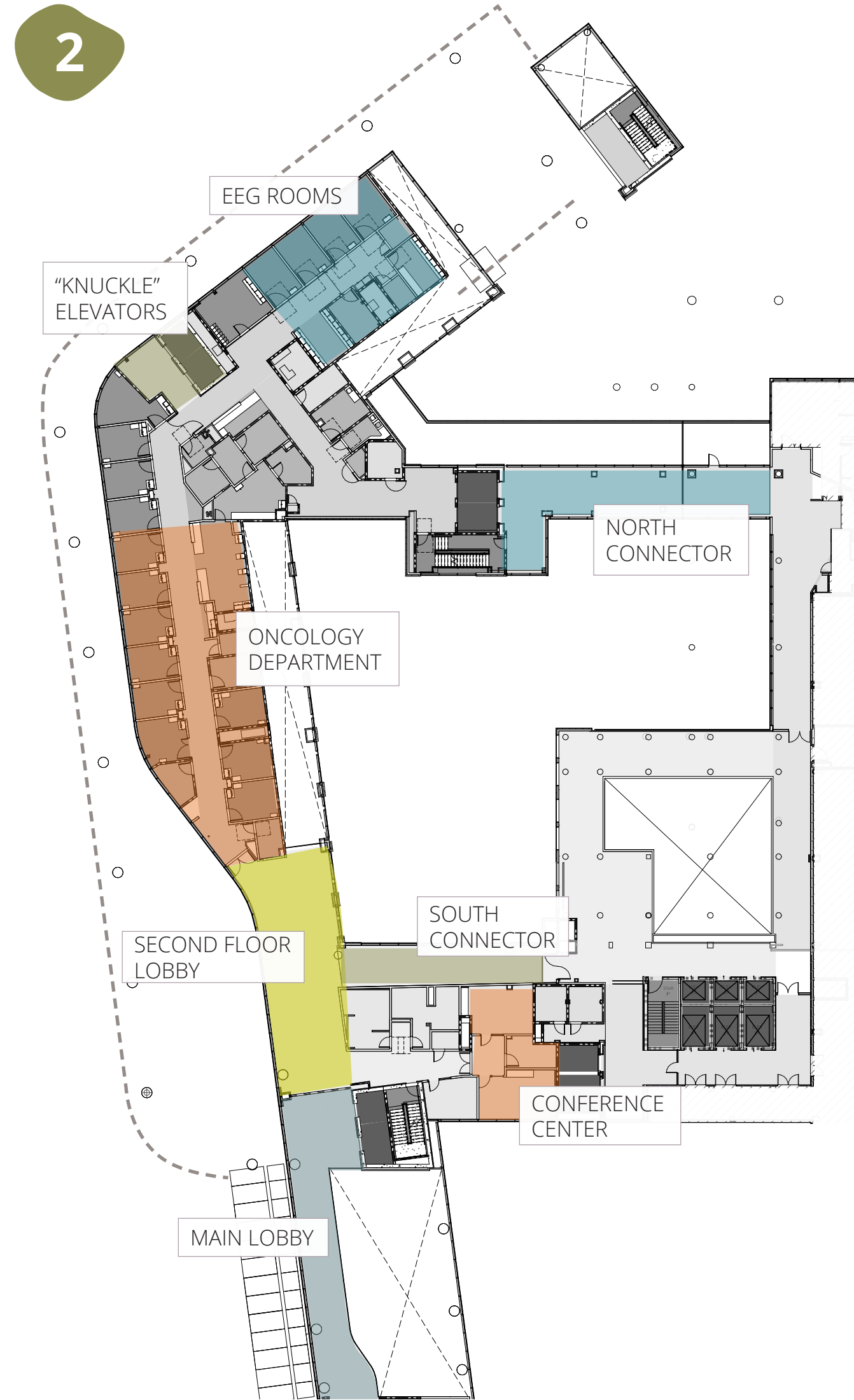
## KEY

- Existing Hospital
- New Inpatient
- New Clinical Support
- New Building Support





# FLOOR PLANS







## INFORMED BY NATURE



### BALANCE

VIBRANCY

NEUTRAL

HARD

SOFT

CURVE

LINEAR

### LIGHT

SHADOW

REFLECT

GLOW

CONNECTION

### FLOW

PATH

NODE

PORTAL

LAYER



# WALKING USERS THROUGH THE DESIGN PROCESS

Often in our work, we develop mockups to work with clients on typical patient rooms. When there are 160+ rooms, it's important to work out all of the details before starting construction. The team met with user groups over several months to analyze the components of the casework, the headwall details, equipment layouts, restroom requirements, and to run through various real-life scenarios.

The contractors were involved in fabricating each of the various elements to aid in these major decision points as the design was finalized. A full scale, in-place mockup was completed for final sign-off before construction began on the patient rooms.



PATIENT ROOM INTERIOR RENDERING



PATIENT CORRIDOR INTERIOR RENDERING



NURSE SERVER MOCKUP



PATIENT ROOM MOCKUP



PATIENT ROOM FOOTWALL MOCKUP



PATIENT ROOM HEADWALL MOCKUP



NURSE STATION MOCKUP





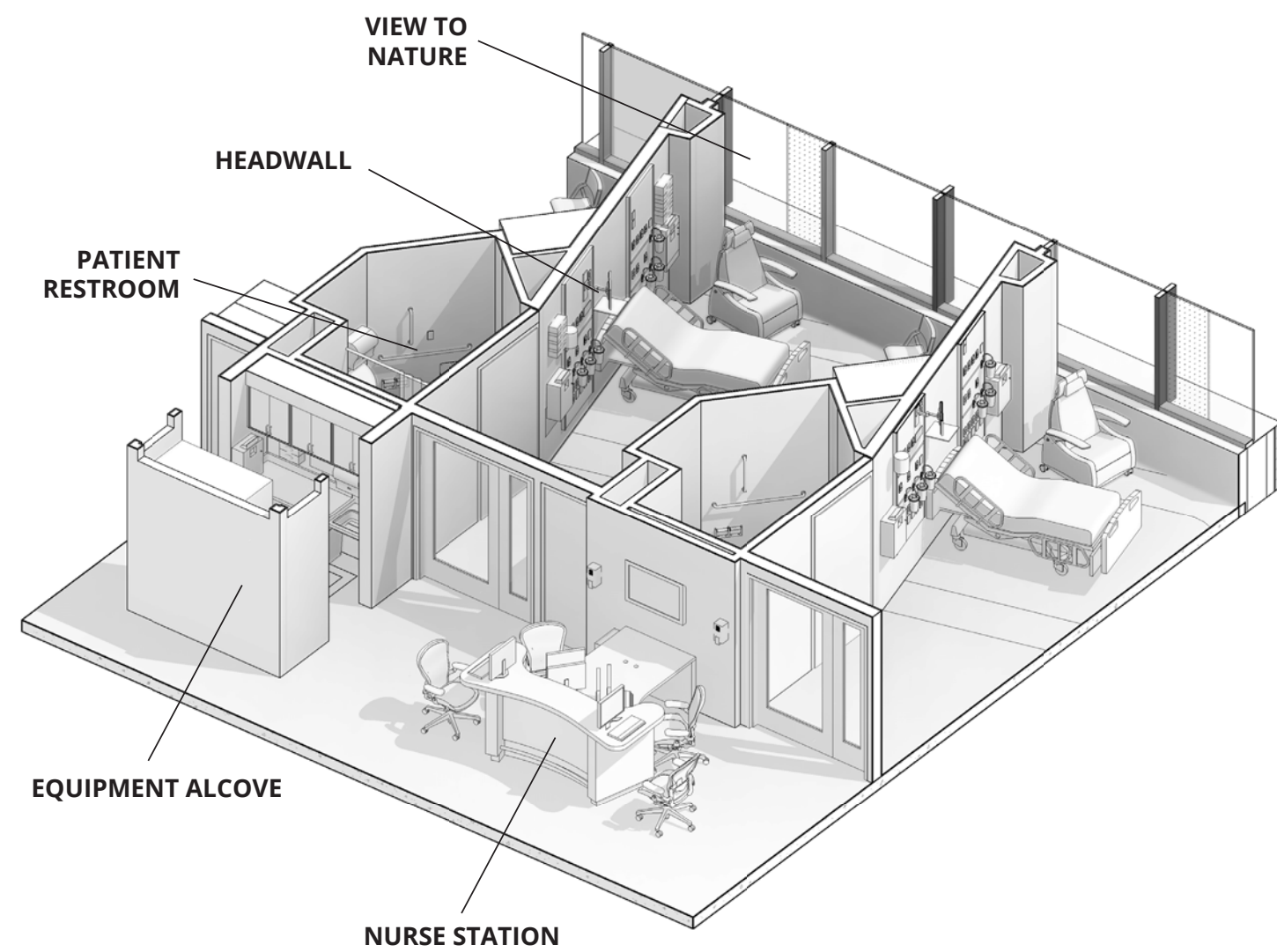
Generous Support For This Room Given By  
**Dr. and Mrs. A. Fred Young**

Generous Support For This Room Given By  
**Dr. and Mrs. F. Hugh Jenkins**

MEDS  
SUBSTATION

To achieve the goal of having caregivers spend more time with patients, the corridor width is increased to allow caregiver work areas just outside the room with space to collaborate. Alcoves for supplies, medications, and equipment are decentralized through the corridor so that no one must go far from the bedside to get the things they need.





## HEALING POWER OF NATURE

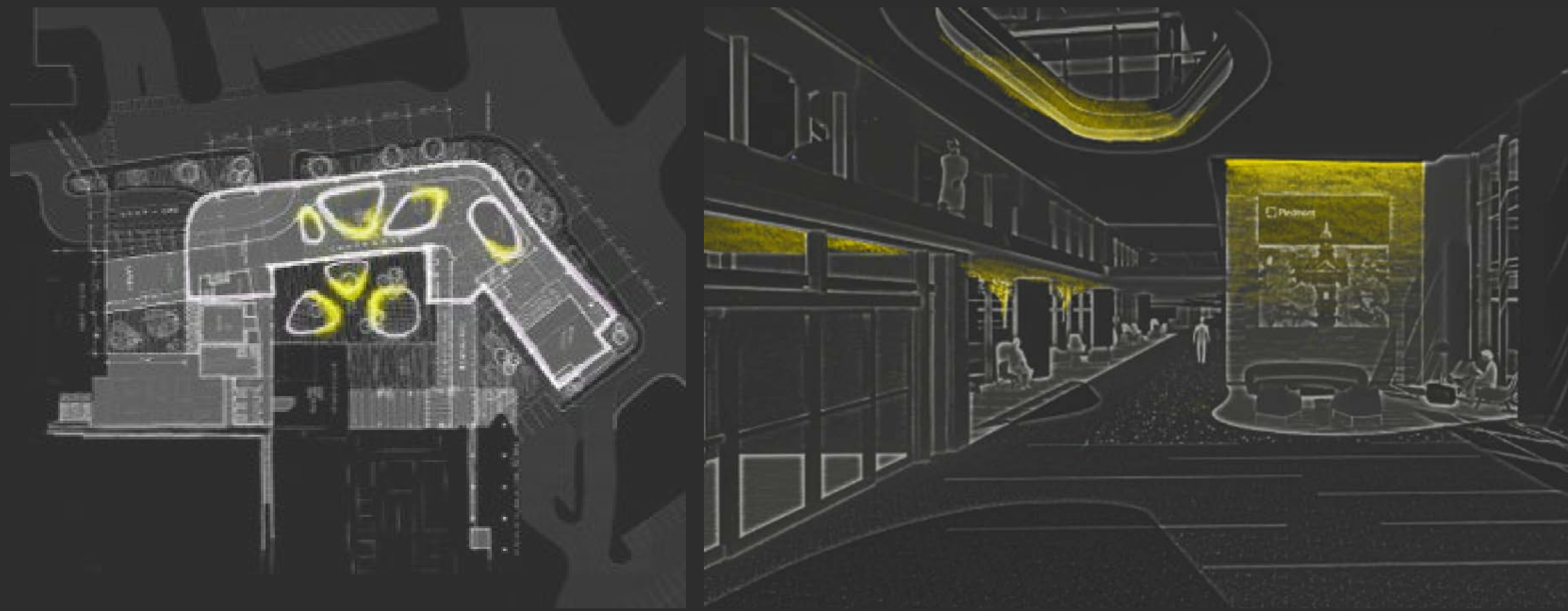
Often in our projects, we lean on nature as a source of inspiration, as research has shown the positive impacts Biophilia and natural elements can bring into a patient's healing journey. At Piedmont Athens, we met with these concepts once more.

Two large courtyards weave together the existing and new campuses, filtering light and views to rich green courtyards deep into the interior environments. This design allows patient rooms to have equal access to tranquil and inviting views outside, creating a visual connection to the healing power of nature.

Vibrant imagery on the headwalls brings nature bedside, while soft, earthy linoleum flooring and warm wood tones to envelope patients in their own piece of nature.



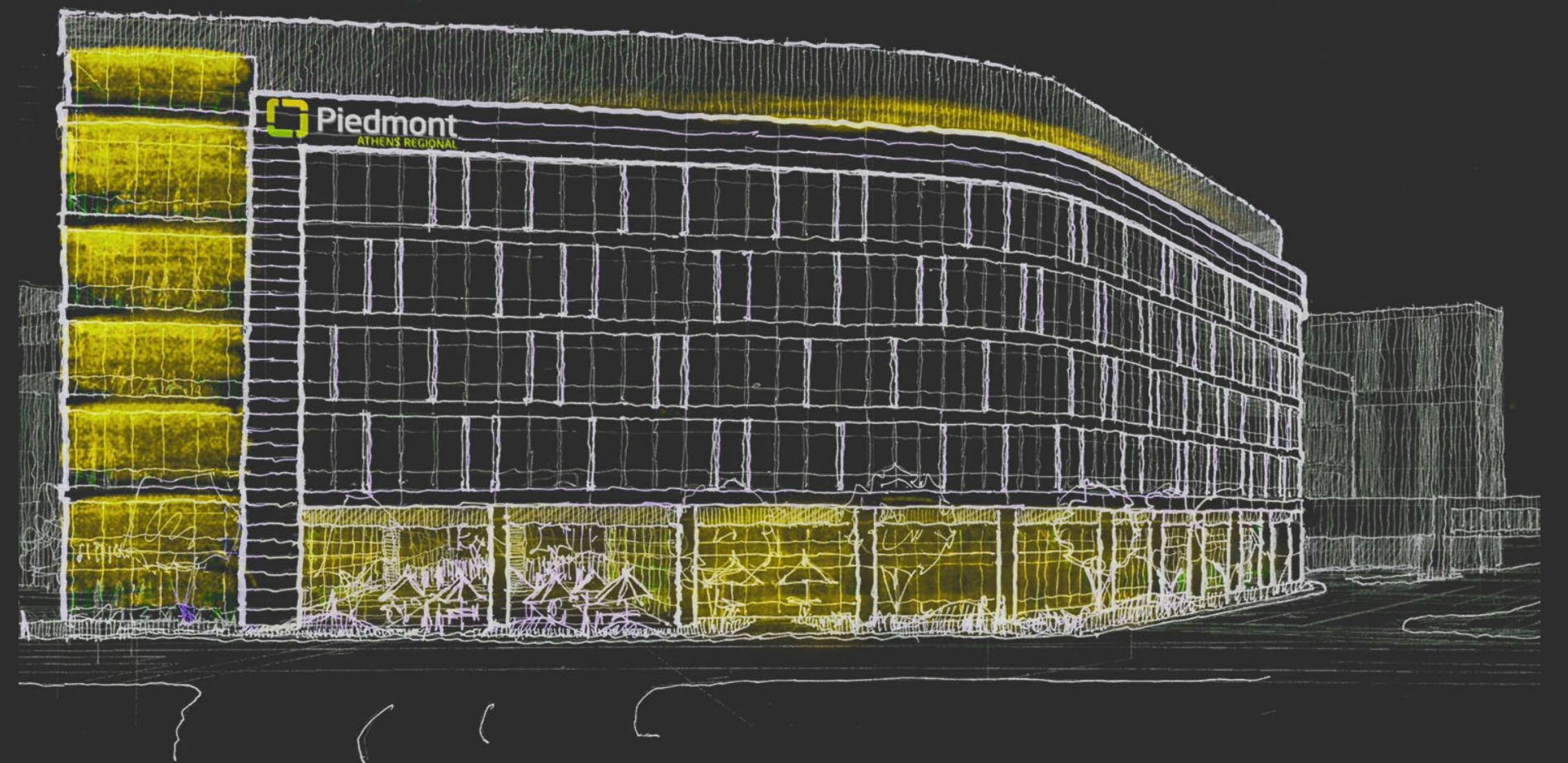
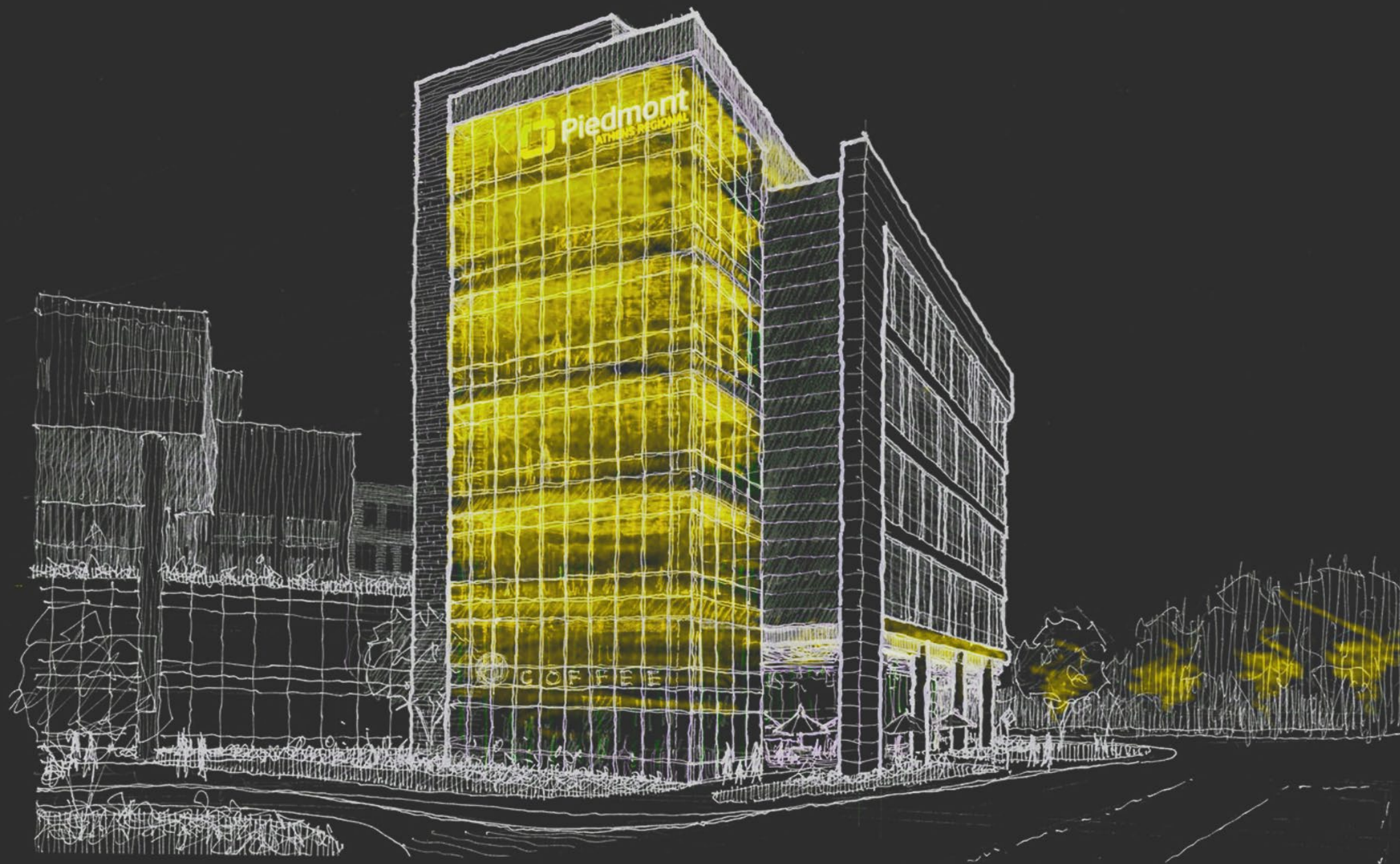




## LIGHTING WITH INTENTIONAL VARIETY

As designers, we all understand the importance lighting brings to our interior environments. Lighting concepts were developed to accentuate major moments and breathe life into the new tower.

Washing the curves throughout both exterior & interior, quiet moments of light ease the edges of the built and natural world. Key features are illuminated with the glow of the sunrise, giving a sense of serenity and calm to the rigidity of structure.

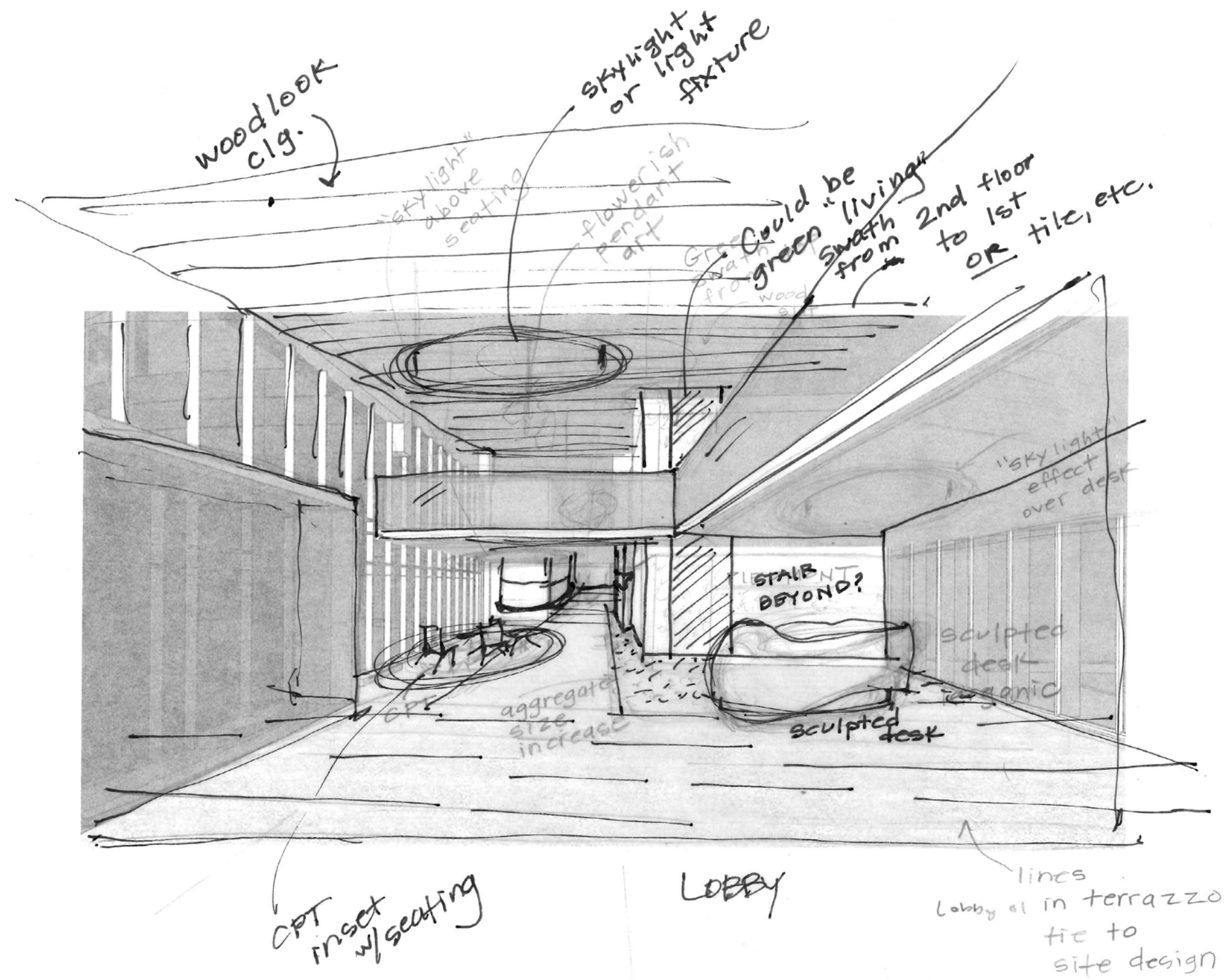




# SHINING DETAILS

From the initial conceptual design phase of the project, skylights were a key feature to establish the entry point of Piedmont Athens Regional. Highlighting the importance of looking upward and onward, three large pebble shaped skylights interrupt the “starry night” of the lobby ceiling. Conceptually, the wood ceiling acts as the branches of the woods, with stars and patches of light breaking through the canopy. Below, the terrazzo creek runs through the lobby, guiding visitors along the concourse and highlighting key decision points.

Detailing the skylights was a particular challenge. Working with gypsum board, framing subcontractors, custom lighting manufacturers, and the lighting design team, the below solution was carefully developed. The faux skylights are impactful reminders to always focus on the shiny moments.



2018

CONCEPTUAL DESIGN



2019

SCHEMATIC DESIGN



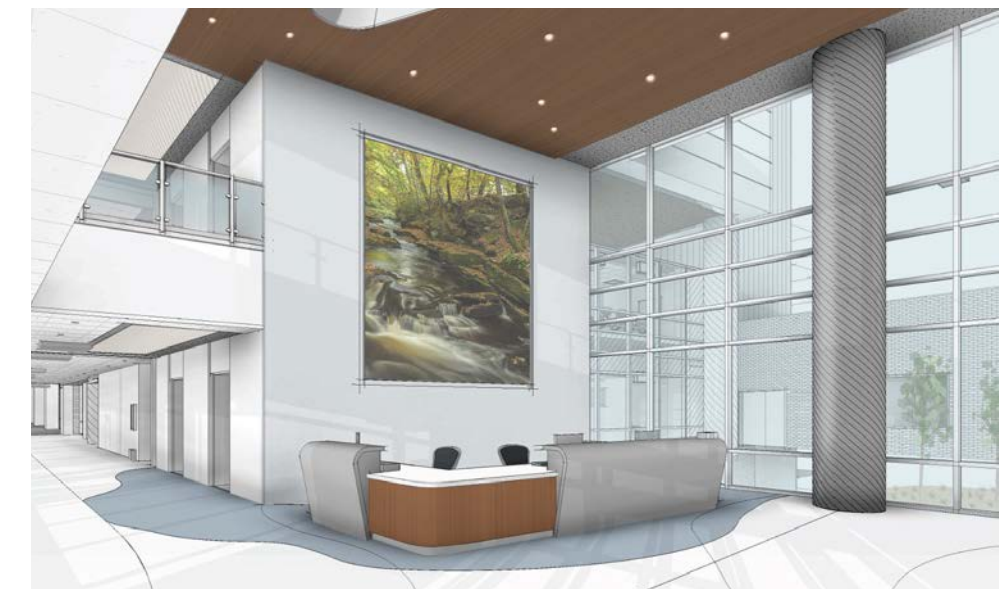
2019

DESIGN DEVELOPMENT



2020

CONSTRUCTION DOCUMENTS



2021

CONSTRUCTION ADMINISTRATION





Guests who enter the building from the second floor parking structure are greeted with almost the same perspective of the lobby space as the ground floor, providing all guests with the same experience and wayfinding benefits.



THANK YOU

 Piedmont

MAIN ENTRANCE